

REFERENCE SPECIFICATIONS

MIL-DTL-24308 FOR DIMENSIONS

NFC-93425 FOR CHARACTERISTICS

PHYSICAL CHARACTERISTICS

-INSULATOR MATERIAL: THERMOPLASTIC UL94V0

-CONTACT MATERIAL: BRASS,
GOLD OVER NICKEL

-ACCESSORIES: STEEL FOR METAL BRACKETS,
cadmium plated yellow passivation
THERMOPLASTIC UL94V0 FOR PLASTIC BRACKETS

BRASS FOR OTHERS ACCESSORIES,
cadmium plated yellow passivation

-SHELLS: STEEL,
cadmium plated yellow passivation

ELECTRICAL CHARACTERISTICS

-NOMINAL CURRENT: 7.5A

-CONTACT RESISTANCE: <=7.3 m Ohms

-CONTACT/CONTACT : >=1000 V

-CONTACT/GROUND : >=1200 V

-INSULATION RESISTANCE: >=5000 MOhms

ENVIRONMENTAL CHARACTERISTICS

- CLIMATIC CATEGORY: 55/125/56

TEMPERATURE RANGE -55°C TO +125°C

DAMP HEAT STEADY STATE 56 DAYS

SALT SPRAY 48 HOURS

MECHANICAL CHARACTERISTICS

RETENTION AGAINST TORQUE: -Threaded insert:0.7 N.m min

-Female screw:0.5 N.m min

Series

DBML25P700M

Shell size: **E A B C D**
(see sheet 3)

Front accessory definition
(see sheet 2)

Blank :without accessory
L :threaded insert M3
O :threaded insert UNC 4-40
V :female screw UNC 4-40

Layout of contacts (see sheet 3)

9,15,25,37,50

Contacts

P :Pin

Termination type

7 Right angle/US foot print

Plating

00 Right angle 500 matings/unmatings

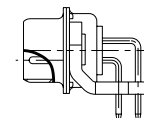
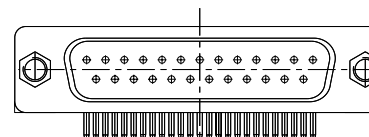
43 Right angle 500 matings/unmatings
for harsh environment

PCB accessories definition(see sheet 2)

Blank :Plastic brackets




C :Without brackets

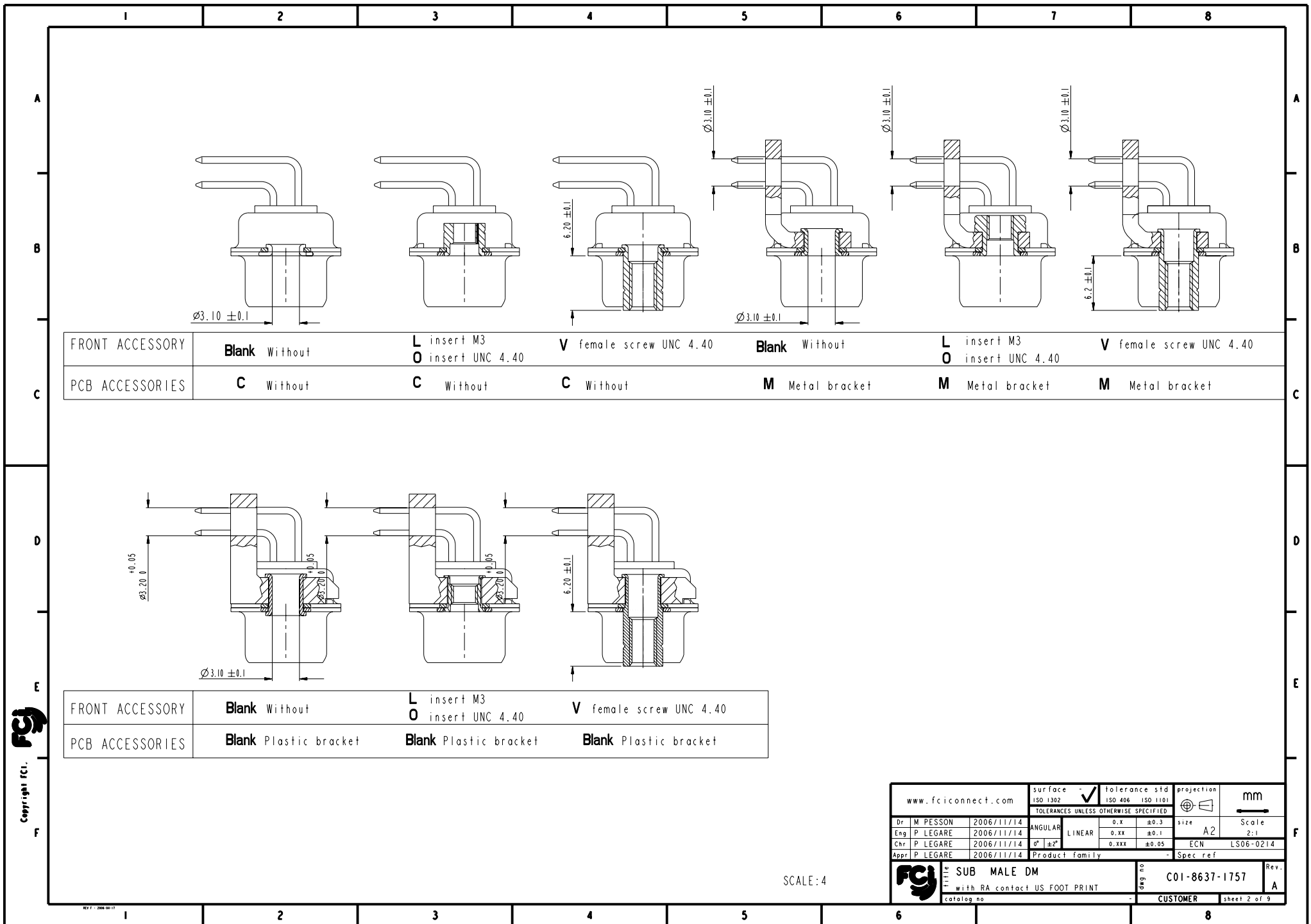
M :Metal brackets



25 WAY for Example

rev	ech no	dr	date
A	LS06-0214	MPE	2006/12/13
-	-	-	-
-	-	-	-
-	-	-	-
-	-	-	-
-	-	-	-
-	-	-	-
-	-	-	-
-	-	-	-

www.fciconnect.com			surface - <input checked="" type="checkbox"/> tolerance std ISO 1302 ISO 406 ISO 1101			projection 		mm 	
TOLERANCES UNLESS OTHERWISE SPECIFIED									
Dr	M PESSON	2006/11/14	ANGULAR	LINEAR	0.X	±0.3	size	A2	Scale
Eng	P LEGARE	2006/11/14			0.XX	±0.1			
Chr	P LEGARE	2006/11/14	0° ±2°		0.XXX	±0.05	ECN	LS06-0214	
Appr	P LEGARE	2006/11/14	Product family			- Spec ref			
			Title SUB MALE DM			deg no C01-8637-1757		Rev.	
			with RA contact US FOOT PRINT			CUSTOMER		sheet 1 of 9	



	1	2	3	4	5	6	7	8
A								
B								
C								
D								
E								
F								

PART NUMBER	FRONT ACCESSORY	PCB ACCESSORY
D*MxxP700C	without	without
D*MLxxP700C	insert M3	without
D*MOxxP700C	insert UNC 4.40	without
D*MVxxP700C	female screw UNC 4.40	without
D*MxxP700M	without	Metal bracket
D*MLxxP700M	insert M3	Metal bracket
D*MOxxP700M	insert UNC 4.40	Metal bracket
D*MVxxP700M	female screw UNC 4.40	Metal bracket
D*MxxP700	without	Plastic bracket
D*MLxxP700	insert M3	Plastic bracket
D*MOxxP700	insert UNC 4.40	Plastic bracket
D*MVxxP700	female screw UNC 4.40	Plastic bracket

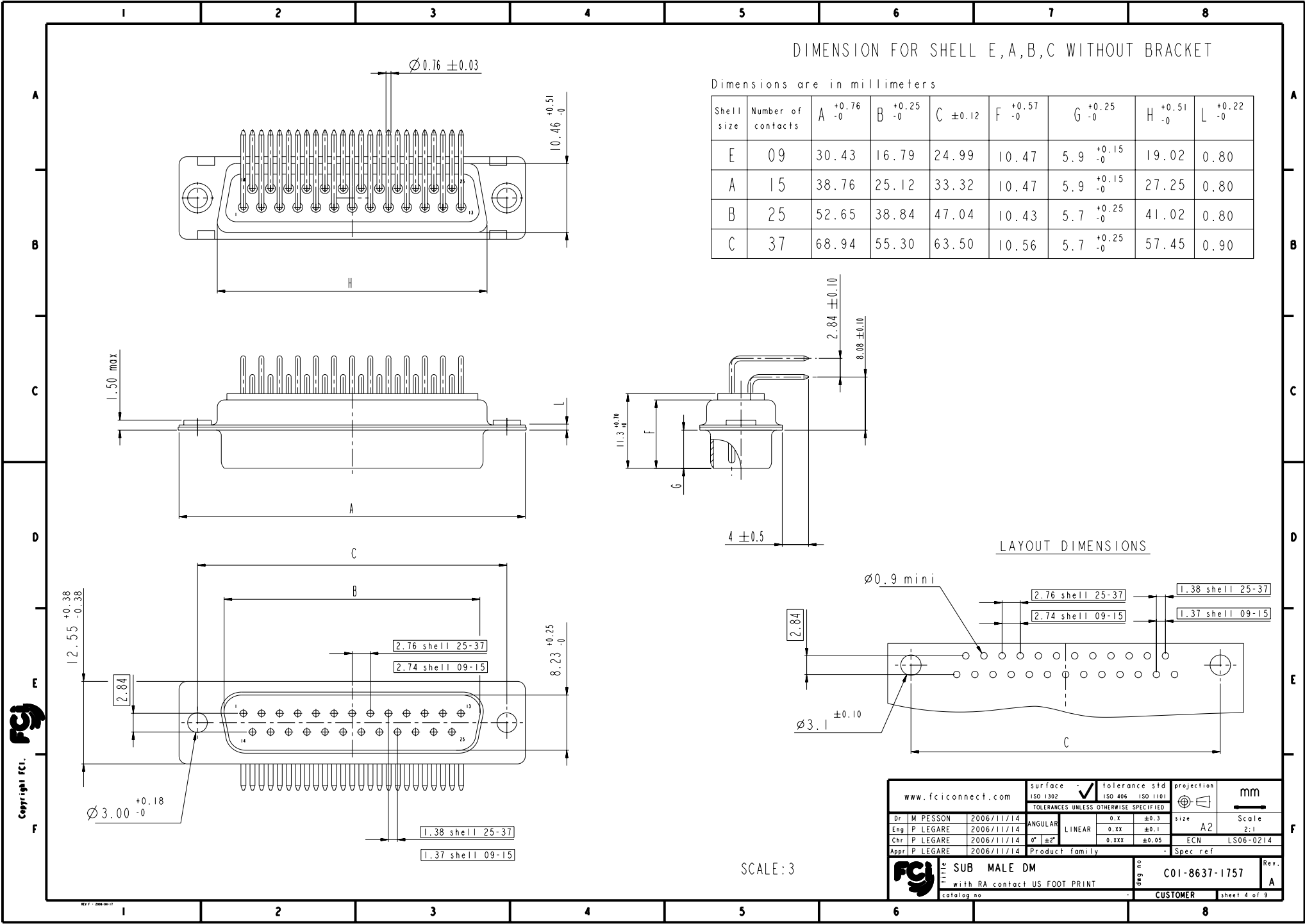
shell size	Contact number
X	XX
E	09
A	15
B	25
C	37
D	50

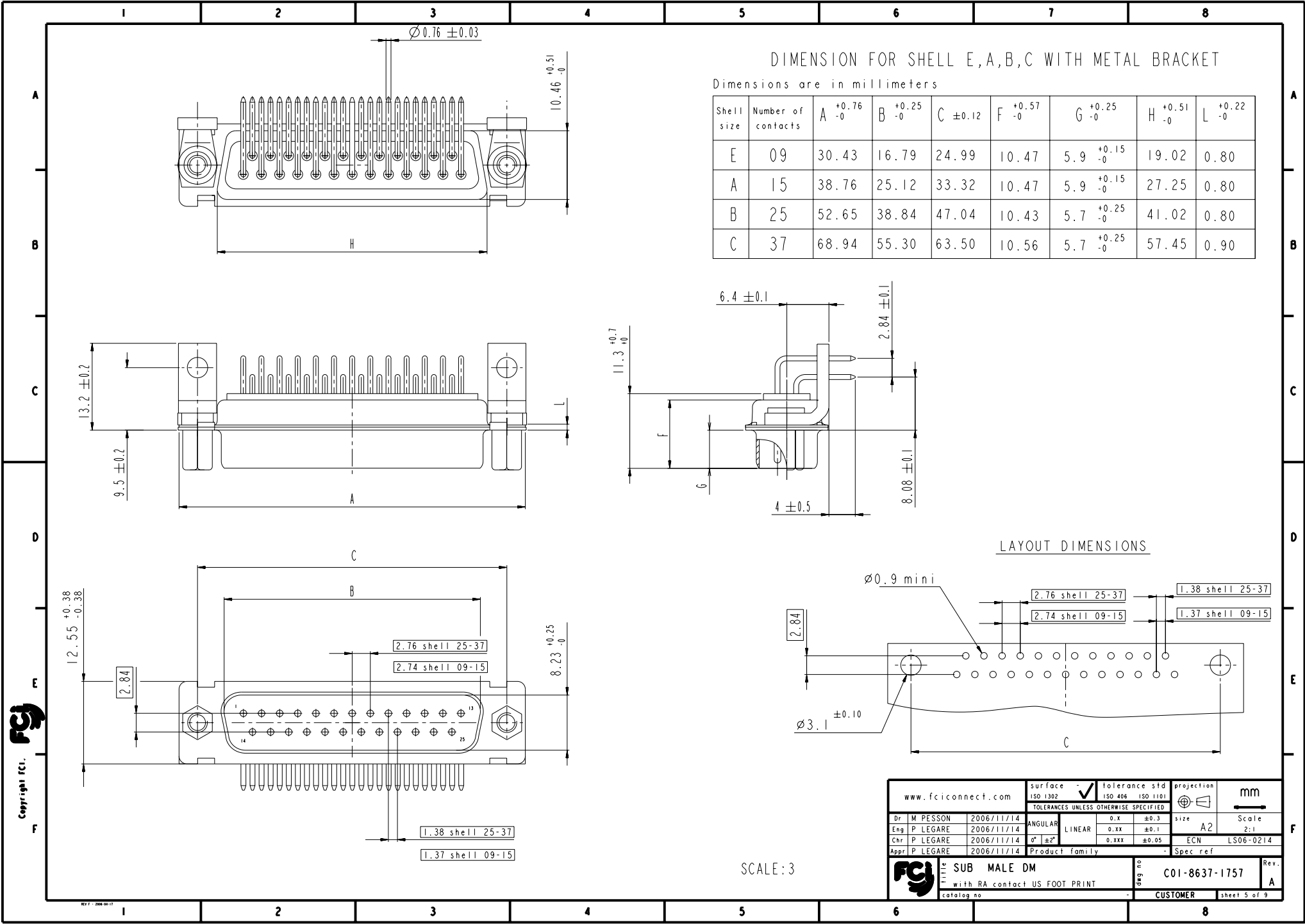
PART NUMBER	FRONT ACCESSORY	PCB ACCESSORY
D*MxxP743C	without	without
D*MLxxP743C	insert M3	without
D*MOxxP743C	insert UNC 4.40	without
D*MVxxP743C	female screw UNC 4.40	without
D*MxxP743M	without	Metal bracket
D*MLxxP743M	insert M3	Metal bracket
D*MOxxP743M	insert UNC 4.40	Metal bracket
D*MVxxP743M	female screw UNC 4.40	Metal bracket
D*MxxP743	without	Plastic bracket
D*MLxxP743	insert M3	Plastic bracket
D*MOxxP743	insert UNC 4.40	Plastic bracket
D*MVxxP743	female screw UNC 4.40	Plastic bracket

FCI

Copyright fci.

www.fciconnect.com		surface - ISO 1302	tolerance std ISO 406 ISO 1101	projection mm
		TOLERANCES UNLESS OTHERWISE SPECIFIED		
Dr	M PESSON	2006/11/14	ANGULAR	0.X ±0.3
Eng	P LEGARE	2006/11/14	LINEAR	0.XX ±0.1
Chr	P LEGARE	2006/11/14	0° ±2°	0.XXX ±0.05
Appr	P LEGARE	2006/11/14	Product family	- Spec.ref
SUB MALE DM		deg no		C01-8637-1757
with RA contact US FOOT PRINT		Rev.		A
catalog no		CUSTOMER		sheet 3 of 9



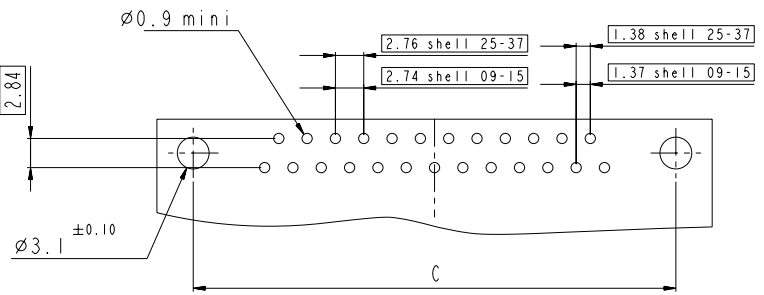


DIMENSION FOR SHELL E,A,B,C WITH METAL BRACKET

Dimensions are in millimeters

Shell size	Number of contacts	A ^{+0.76 -0}	B ^{+0.25 -0}	C ±0.12	F ^{+0.57 -0}	G ^{+0.25 -0}	H ^{+0.51 -0}	L ^{+0.22 -0}
E	09	30.43	16.79	24.99	10.47	5.9 ^{+0.15 -0}	19.02	0.80
A	15	38.76	25.12	33.32	10.47	5.9 ^{+0.15 -0}	27.25	0.80
B	25	52.65	38.84	47.04	10.43	5.7 ^{+0.25 -0}	41.02	0.80
C	37	68.94	55.30	63.50	10.56	5.7 ^{+0.25 -0}	57.45	0.90

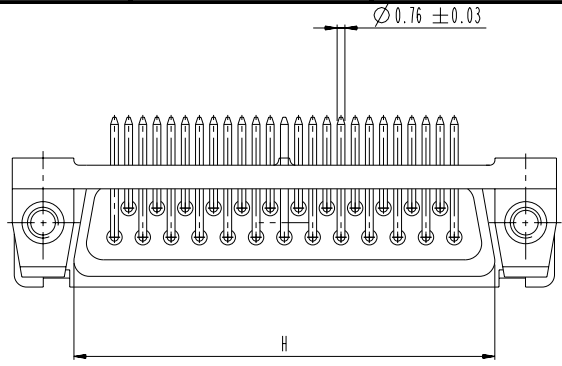
LAYOUT DIMENSIONS



SCALE: 3

www.fciconnect.com		surface -	tolerance std	projection	mm
		ISO 1302	ISO 406 ISO 1101		
		TOLERANCES UNLESS OTHERWISE SPECIFIED			
Dr	M PESSON	2006/11/14	ANGULAR	0.X	±0.3
Eng	P LEGARE	2006/11/14	LINEAR	0.XX	±0.1
Chr	P LEGARE	2006/11/14	0° ±2°	0.XXX	±0.05
Appr	P LEGARE	2006/11/14	Product family	- Spec ref	
SUB MALE DM		with RA contact US FOOT PRINT		deg no	C01-8637-1757
catalog no		CUSTOMER		Rev.	A
				sheet 5 of 9	

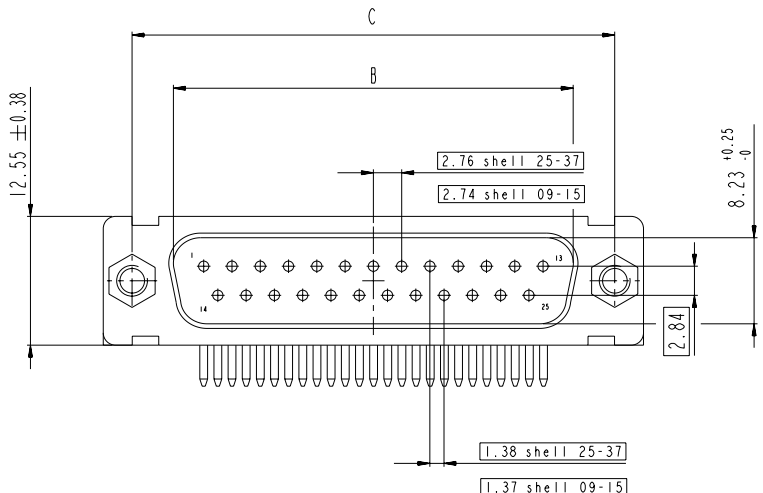
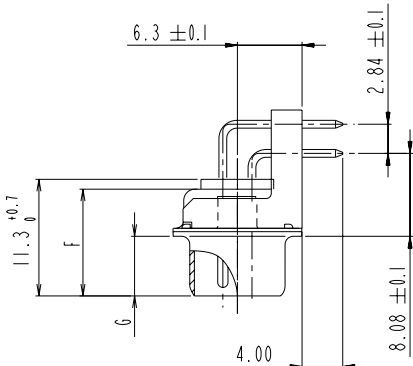
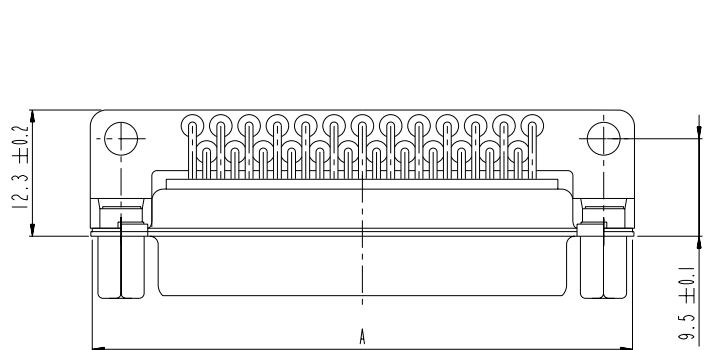
I 2 3 4 5 6 7 8



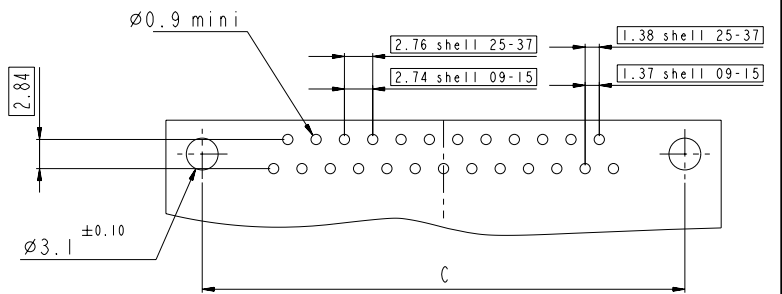
DIMENSION FOR SHELL E,A,B,C WITH PLASTIC BRACKET

Dimensions are in millimeters

Shell size	Number of contacts	A $\begin{smallmatrix} +0.76 \\ -0 \end{smallmatrix}$	B $\begin{smallmatrix} +0.25 \\ -0 \end{smallmatrix}$	C ± 0.12	F $\begin{smallmatrix} +0.57 \\ -0 \end{smallmatrix}$	G $\begin{smallmatrix} +0.25 \\ -0 \end{smallmatrix}$	H $\begin{smallmatrix} +0.51 \\ -0 \end{smallmatrix}$	L $\begin{smallmatrix} +0.22 \\ -0 \end{smallmatrix}$
E	09	30.43	16.79	24.99	10.47	5.9 $\begin{smallmatrix} +0.15 \\ -0 \end{smallmatrix}$	19.02	0.80
A	15	38.76	25.12	33.32	10.47	5.9 $\begin{smallmatrix} +0.15 \\ -0 \end{smallmatrix}$	27.25	0.80
B	25	52.65	38.84	47.04	10.43	5.7 $\begin{smallmatrix} +0.25 \\ -0 \end{smallmatrix}$	41.02	0.80
C	37	68.94	55.30	63.50	10.56	5.7 $\begin{smallmatrix} +0.25 \\ -0 \end{smallmatrix}$	57.45	0.90

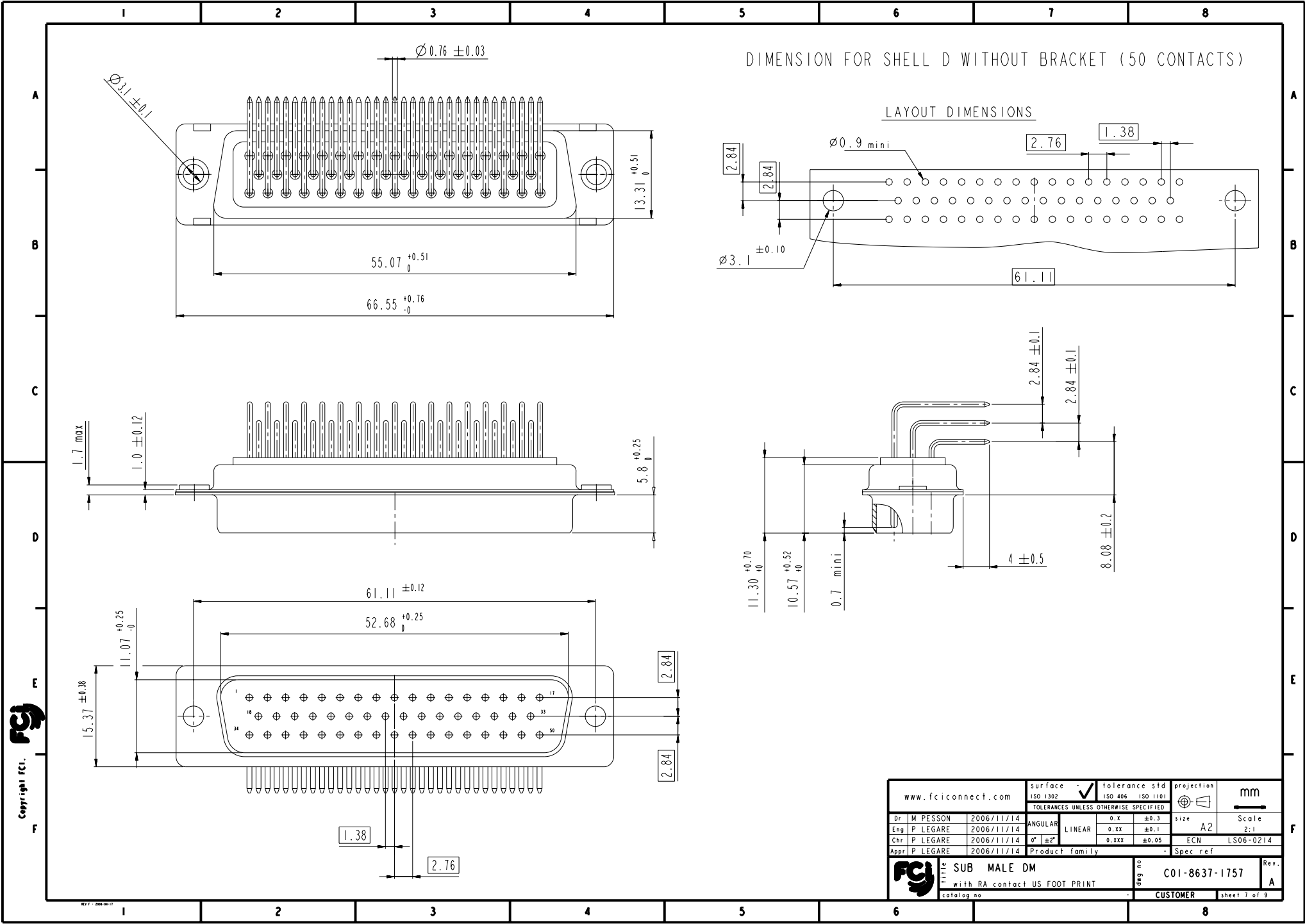


LAYOUT DIMENSIONS



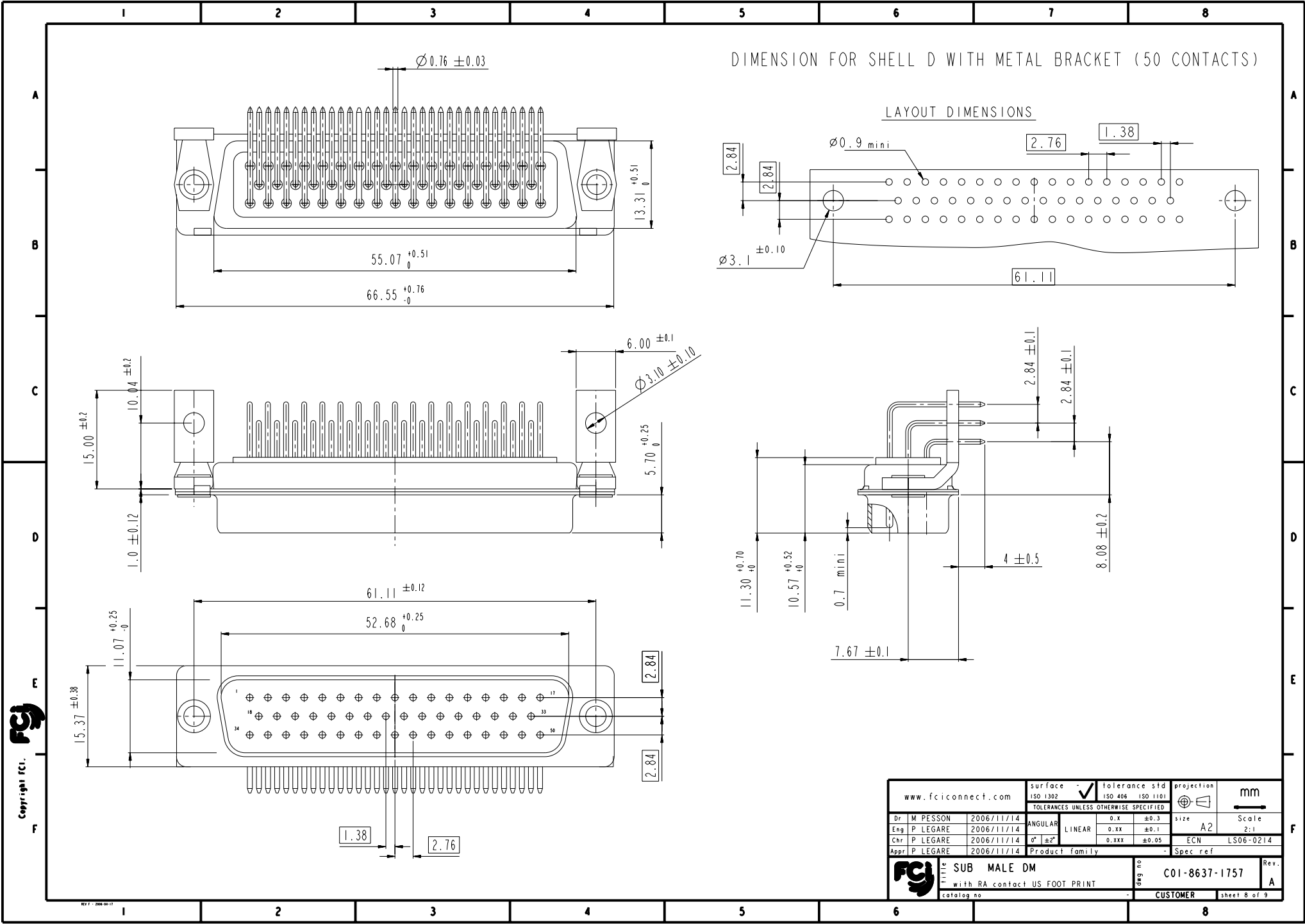
Copyright fci.

www.fciconnect.com		surface - ISO 1302	tolerance std ISO 406 ISO 1101	projection mm
TOLERANCES UNLESS OTHERWISE SPECIFIED				
Dr M PESSON	2006/11/14	ANGULAR	0.X ±0.3	size A2
Eng P LEGARE	2006/11/14	LINEAR	0.XX ±0.1	Scale 2:1
Chr P LEGARE	2006/11/14	0° ±2°	0.XXX ±0.05	ECN LS06-0214
Appr P LEGARE	2006/11/14	Product family	Spec ref	
SUB MALE DM		C01-8637-1757		Rev. A
with RA contact US FOOT PRINT		CUSTOMER		sheet 6 of 9



Copyright fci.

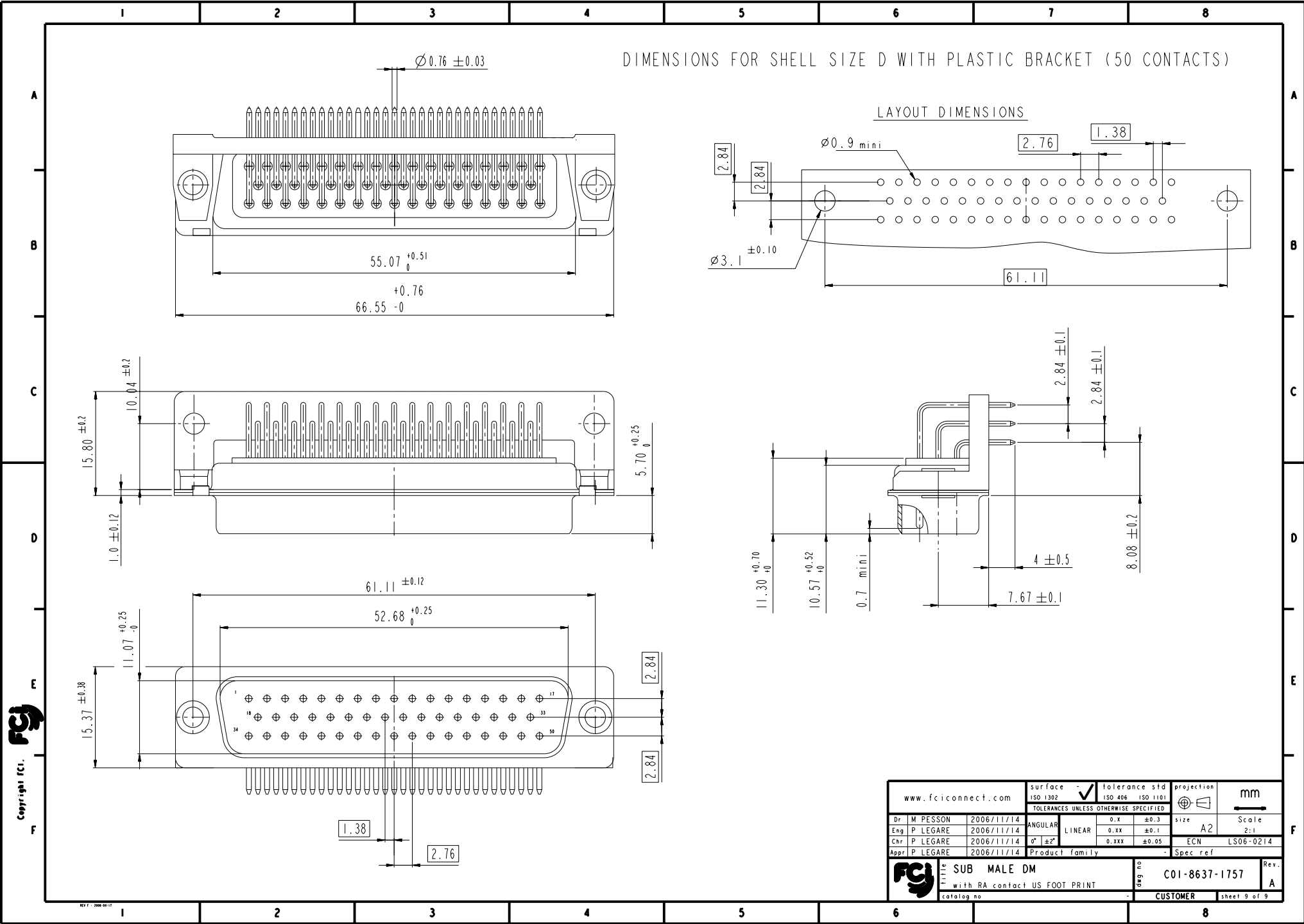
www.fciconnect.com		surface	ISO 1302	tolerance std	ISO 406	ISO 1101	projection	mm
		TOLERANCES UNLESS OTHERWISE SPECIFIED						
Dr	M. PESSON	2006/11/14	ANGULAR	0.X	± 0.3		size	A2
Eng	P. LEGARE	2006/11/14	LINEAR	0.XX	± 0.1		Scale	2:1
Chr	P. LEGARE	2006/11/14	$0^\circ \pm 2^\circ$	0.XXX	± 0.05		ECN	LS06-0214
Appr	P. LEGARE	2006/11/14	Product family				Spec. ref	
SUB MALE DM		with RA contact US FOOT PRINT		deg no		C01-8637-1757		Rev.
catalog no						CUSTOMER		sheet 7 of 9



DIMENSION FOR SHELL D WITH METAL BRACKET (50 CONTACTS)

LAYOUT DIMENSIONS

www.fciconnect.com		surface	ISO 1302	tolerance std	ISO 406	ISO 1101	projection	mm
		TOLERANCES UNLESS OTHERWISE SPECIFIED					size	Scale
Dr	M PESSON	2006/11/14	ANGULAR	0.X	± 0.3		A2	2:1
Eng	P LEGARE	2006/11/14	LINEAR	0.XX	± 0.1		ECN	LS06-0214
Chr	P LEGARE	2006/11/14	$0^\circ \pm 2^\circ$	0.XXX	± 0.05		Spec ref	
Appr	P LEGARE	2006/11/14	Product family					
SUB MALE DM		Title		with RA contact US FOOT PRINT		C01-8637-1757		Rev.
catalog no						A		
				CUSTOMER		sheet 8 of 9		



Mouser Electronics

Authorized Distributor

Click to View Pricing, Inventory, Delivery & Lifecycle Information:

[FCI / Amphenol:](#)

[DAM15P743M](#) [DBM25P743M](#) [DCM37P743M](#) [DEM09P743](#) [DEM09P743M](#) [DAMO15P700M](#) [DAMO15P743M](#)
[DEMV09P743M](#) [DAMV15P743M](#) [DAM15P743](#) [DBM25P743](#) [DAM15P743C](#)