

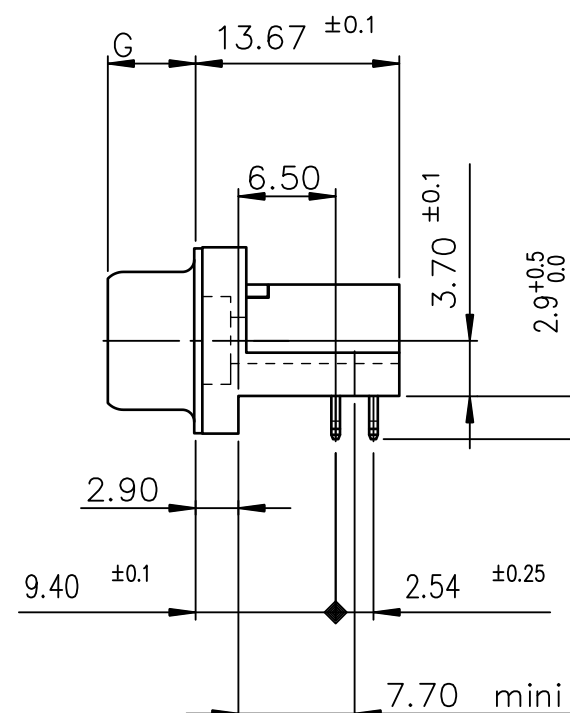
TIN LEAD PART NUMBER

SHELL	A ± 0.38	B ± 0.12	C ± 0.10	D $+0.25$	E ± 0.07	G	PART NUMBER	PART NUMBER
09	30.81	24.99	18.00	16.79	10.96	5.90 $+0.15$ 0	D09P82C4PA00	D09P82C6PA00
15	39.14	33.32	26.32	25.12	19.18	5.90 $+0.15$ 0	D15P82C4PA00	D15P82C6PA00
25	53.03	47.04	40.04	38.84	33.12	5.70 $+0.25$ 0	D25P82C4PA00	D25P82C6PA00
37	69.32	63.50	56.50	55.30	49.68	5.70 $+0.25$ 0	D37P82C4PA00	D37P82C6PA00
Gold flash							0.76 μ gold	

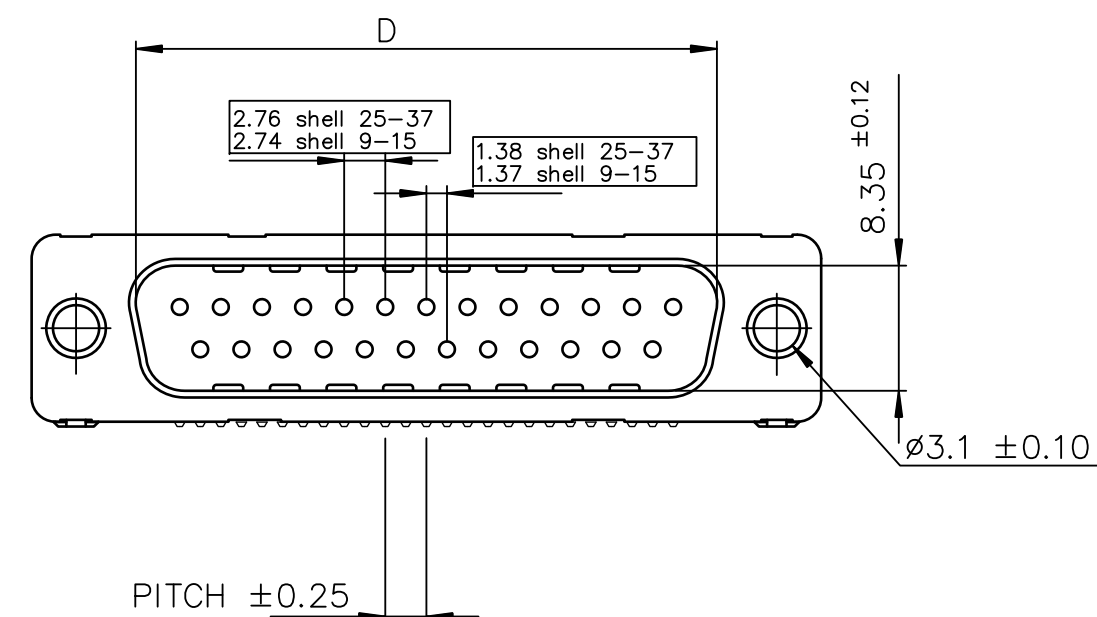
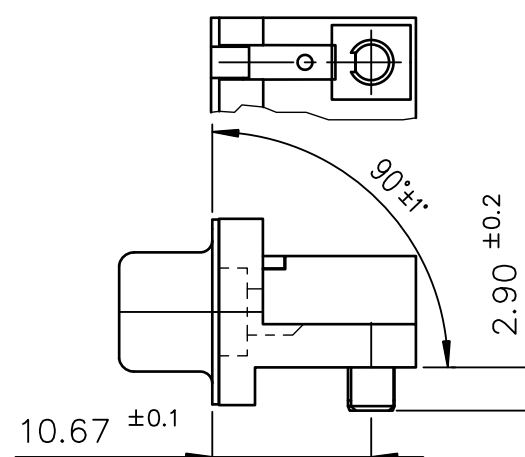
LEAD FREE PART NUMBER

SHELL	A ± 0.38	B ± 0.12	C ± 0.10	D ± 0.25	E ± 0.07	G	PART NUMBER	PART NUMBER
09	30.81	24.99	18.00	16.79	10.96	5.90 ± 0.15	D09P82C4PA00LF	D09P82C6PA00LF
15	39.14	33.32	26.32	25.12	19.18	5.90 ± 0.15	D15P82C4PA00LF	D15P82C6PA00LF
25	53.03	47.04	40.04	38.84	33.12	5.70 ± 0.25	D25P82C4PA00LF	D25P82C6PA00LF
37	69.32	63.50	56.50	55.30	49.68	5.70 ± 0.25	D37P82C4PA00LF	D37P82C6PA00LF
Gold flash								0.76 μ gold

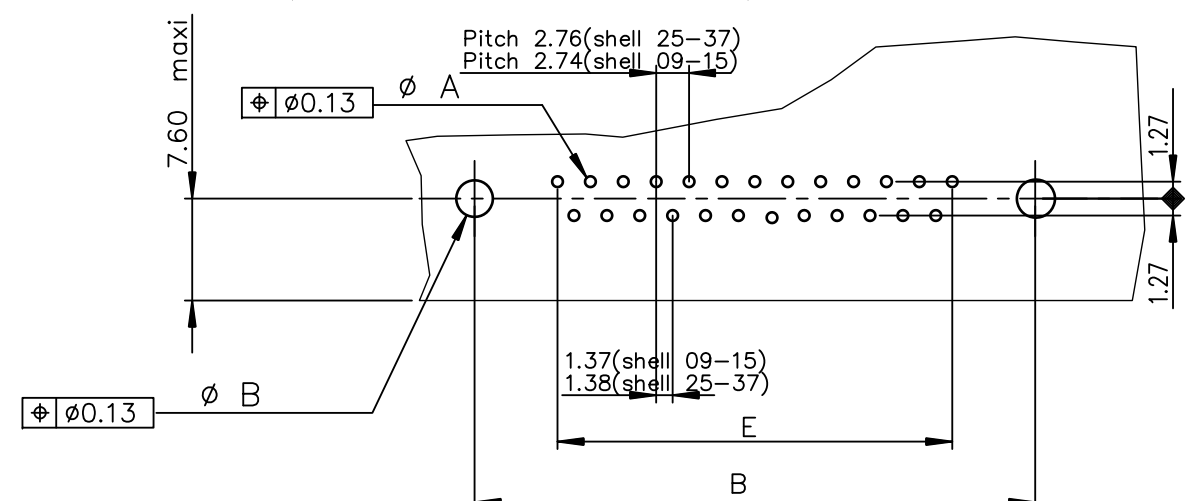
view shown without plastic pin



Detail of integral plastic pin

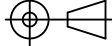




PC card drilling dimensions(after plating)
(thickness 1.60 or 2.40±0.20mm)



GENERAL CHARACTERISTICS AND ROHS INFORMATIONS:

SEE DRAWING C01-8646-0001

mat'l. code —				surface ISO 1302 ✓		tolerance ISO 406 ISO 1101		projection 		product family D-SUB																																																																																																																																																																																																																																																																																																																																																																																																																																																																																				
ltr		ecn no		dr	date		tolerances unless otherwise specified							title MALE CONNECTOR DELTA-D EUROSTYLE RIGHT ANGLED PRESS FIT																																																																																																																																																																																																																																																																																																																																																																																																																																																																																
G		ELX-I-18050		MP	2014/06/23		angles		linear		.0±.0.1		scale 2:1																																																																																																																																																																																																																																																																																																																																																																																																																																																																																	
											.00±0.1																																																																																																																																																																																																																																																																																																																																																																																																																																																																																			
							0°±2'				.000±0.1																																																																																																																																																																																																																																																																																																																																																																																																																																																																																			
							dr	PESSON			1995/10/16				dwg no										sheet 1 of 1			size																																																																																																																																																																																																																																																																																																																																																																																																																																																																		
							engr	MITHUN PAUL			2014/06/23				C01-8646-0384										A3																																																																																																																																																																																																																																																																																																																																																																																																																																																																					
							chr	ALIAS BABU			2014/06/23																																																																																																																																																																																																																																																																																																																																																																																																																																																																																			
							appd	BIJU K PAUL			2014/06/23																																																																																																																																																																																																																																																																																																																																																																																																																																																																																			
sheet index		revision sheet		G	1																																																																																																																																																																																																																																																																																																																																																																																																																																																																																									

PDS: Rev :G

STATUS:Released

Printed: Jul 04, 2014

Mouser Electronics

Authorized Distributor

Click to View Pricing, Inventory, Delivery & Lifecycle Information:

[FCI / Amphenol:](#)

[D09P82C6PA00LF](#) [D15P82C4PA00LF](#) [D25P82C6PA00LF](#) [D09P82C6PA00](#) [D15P82C4PA00](#) [D25P82C6PA00](#)
[D37P82C4PA00LF](#)