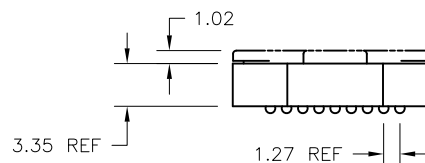
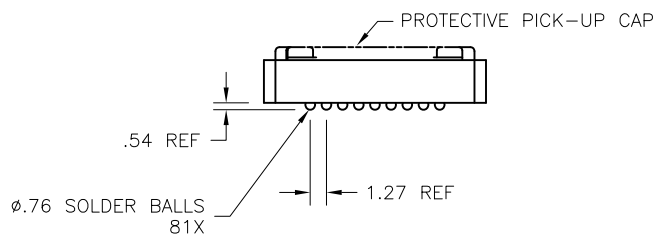
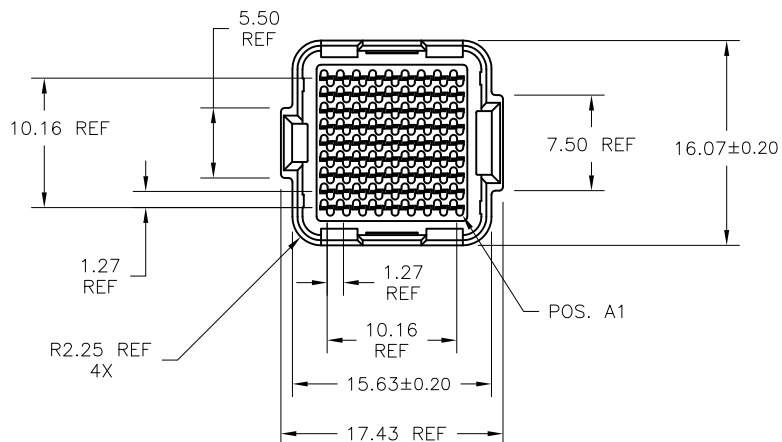


PRODUCT No.

SEE SHEET 2



NOTES:

①. MAT'L

HOUSING: LCP
CONTACT: COPPER ALLOY

PLATING

CONTACT: (SEE TABLE ON SHEET 2)
SOLDER BALL: (SEE TABLE ON SHEET 2)
EUTECTIC SnPb OR LEAD FREE
95.5Sn/4Ag/0.5Cu

2. OVERALL BOARD-TO-BOARD STACK
HEIGHT WHEN MATED TO P/N 55715
81 POSITION 4.0mm RECPT. IS 4.0mm REF.

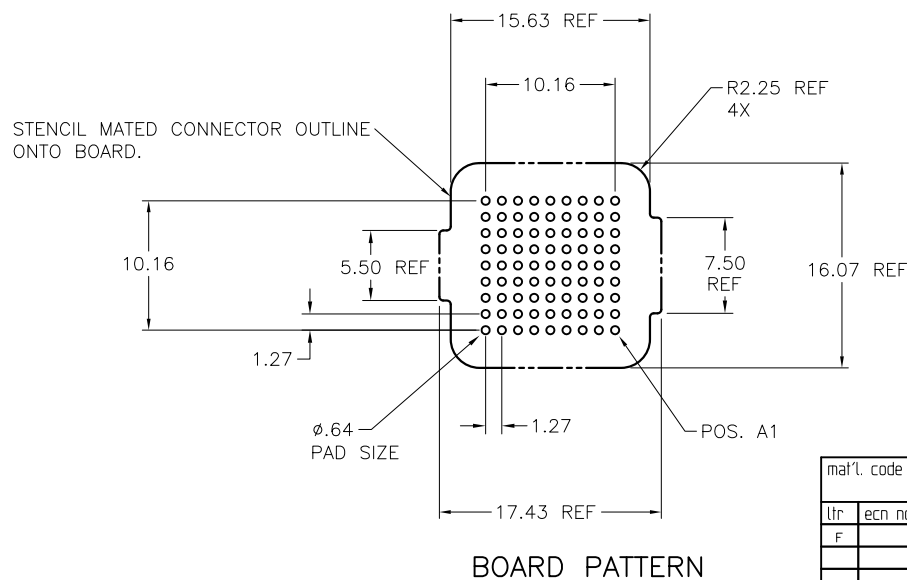
3. PLATING FOR -2XX SERIES DASH NOS. MEETS
THE REQUIREMENTS OF
CENTRAL OFFICE ENVIRONMENT, (25 YEAR
LIFE EXPECTANCY).

④. FOR PROPER APPLICATION FOLLOW FCI APPLICATION
SPECIFICATION GS-20-033 LEAD FREE SOLDER BALLS WILL
NOT SOLDER PROPERLY IN A LEADED SOLDER PROCESS
DUE TO A HIGHER REFLOW TEMPERATURE. LEAD FREE
PRODUCT IS THEREFORE NOT BACKWARDS COMPATIBLE WITH
LEADED OR SOME SOLDERING APPLICATIONS. REFERENCE
FCI APPLICATION SPECIFICATION

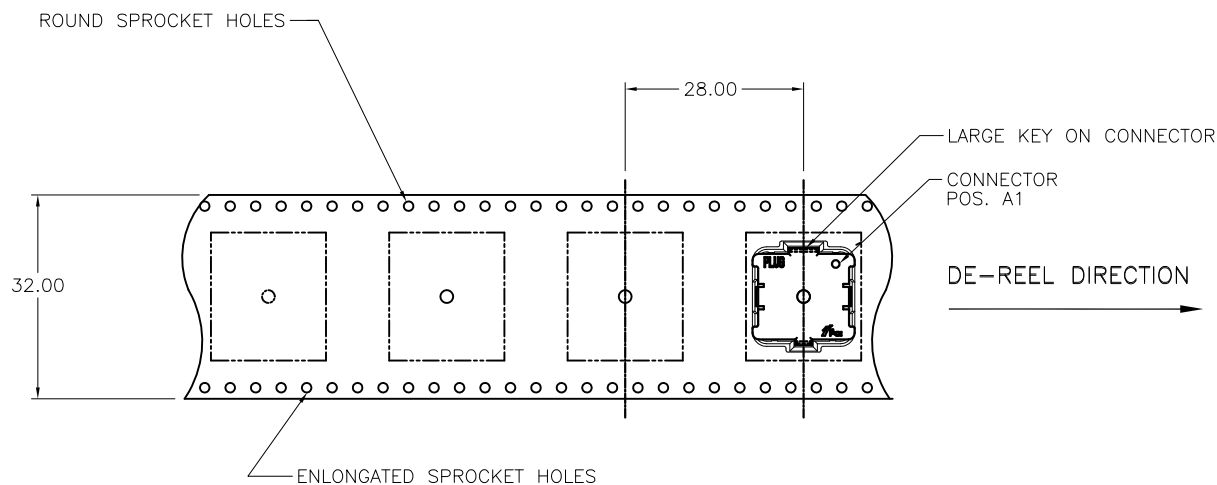
⑤. THIS PRODUCT MEETS EUROPEAN UNION DIRECTIVES AND
OTHER COUNTRY REGULATIONS AS DESCRIBED IN GS-22-008
PRODUCT MEETING THIS DIRECTIVE IS IDENTIFIED IN THE LOT
CODE NUMBER MARKED ON EACH PART BY HAVING AN "X"
IN THE SEVENTH CHARACTER POSITION

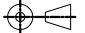

mat'l. code				surface		tolerance	projection	product family	
-				ASME Y14.5		ASME Y14.5		MEG-Array	
ltr	ec'n no.	dr	date	tolerances unless otherwise specified				title	
A	V20800	DAI	2002-04-24	angles	to 30°	X ±3	MM	0mm PLUG ASSY.	
B	V20949	DAI	2002-08-15			XX ±10		9X9 = 81 POSITION	
C	V03-0678	DAI	2003-06-18			XXX ±050	scale 1:1		
D	V04-0940	VS	2004-10-09	dr		4-9-01	FCI	dwg no	
E	V06-0560	LP	2006-07-14	engr		4-9-01		55714	
F	V12-0040	DCH	2002-11-14	chr		4-9-01		sheet 1 of 3	
				appd		4-9-01		size	
sheet	revision	F	F	F				type	
index	sheet	1	2	3				CUSTOMER Drawing	

PRODUCT No.	PICK-UP CAP	CONTACT PLATING	SOLDER BALL
55714-002	YES	15u" (.38um) Au OVER Ni	SnPb
55714-002LF			SnAgCu LEAD FREE, NOTE 5
55714-092	YES	15u" (.38um) GXT OVER Ni	SnPb
55714-092LF			SnAgCu LEAD FREE, NOTE 5
55714-102	YES	30u" (.76um) Au OVER Ni	SnPb
55714-102LF			SnAgCu LEAD FREE, NOTE 5
55714-192	YES	30u" (.76um) GXT OVER Ni	SnPb
55714-192LF			SnAgCu LEAD FREE, NOTE 5
55714-202	YES	SPECIAL Au PLATING, SEE NOTE 3	SnPb, NOTE 3
55714-202LF			SnAgCu LEAD FREE, NOTES 3 AND 5
55714-292	YES	SPECIAL GXT PLATING, SEE NOTE 3	SnPb, NOTE 3
55714-292LF			SnAgCu LEAD FREE, NOTES 3 AND 5



mat'l. code				surface	tolerance	projection	product family
-				ASME Y14.5	ASME Y14.5		MEG-Array
ltr	ecr no	dr	date	tolerances unless otherwise specified		MM	title
F				angles	X ±3 XX ±10 XXX ±050		0mm PLUG ASSY. 9X9 = 81 POSITION
				dr	D.WAUGHEN 4-9-01	scale 1:1	dwg no
				enr	J.KONTOS 4-9-01		sheet 2 of 3
				chr	J.KONTOS 4-9-01		size
				appd	J.KONTOS 4-9-01		A4
sheet index	revision sheet						type CUSTOMER Drawing



mat'l. code				surface	tolerance	projection	product family
—				ASME Y14.5	ASME Y14.5		MEG-Array
ltr	ecr no	dr	date	tolerances unless otherwise specified		MM	title
F				angles	X ±3		0mm PLUG ASSY. 9X9 = 81 POSITION
				0° ±2°	XX ±10		
					XXX ±050	scale 1:1	dwg no
		dr	D.WAUGHEN	4-9-01			sheet 3 of 3
		enr	J.KONTOS	4-9-01			size
		chr	J.KONTOS	4-9-01			55714
		appd	J.KONTOS	4-9-01			A4
sheet index	revision sheet						type
							CUSTOMER Drawing

Mouser Electronics

Authorized Distributor

Click to View Pricing, Inventory, Delivery & Lifecycle Information:

[FCI / Amphenol:](#)

[55714-102](#) [55714-002LF](#) [55714-102LF](#) [55714-202LF](#) [55714-202](#) [55714-002](#) [55714-292LF](#) [55714-092](#) [55714-092LF](#) [55714-192LF](#) [55714-192](#)