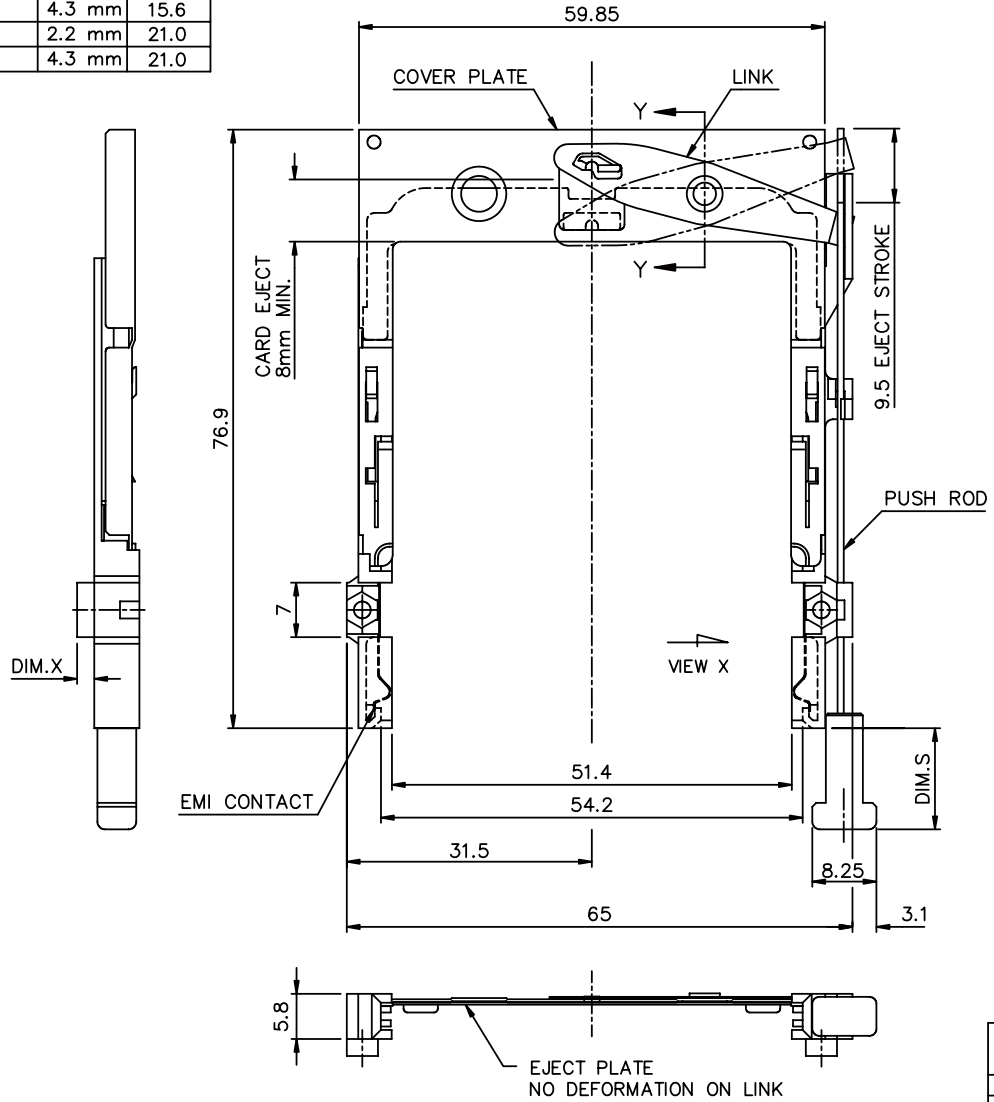


Tous droits strictement réservés. Reproduction ou communication à des tiers sans autorisation écrite du propriétaire.  
Property of c BERG ELECTRONICS.  
Copyright BERG ELECTRONICS by

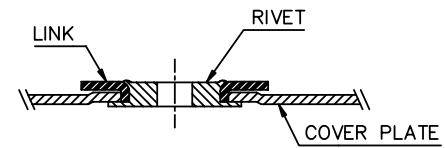
All rights strictly reserved. Reproduction or issue to third parties in any form without the written authority from the proprietor.  
Property of c BERG ELECTRONICS.  
Copyright BERG ELECTRONICS by

PRODUCT NUMBER	DIM. X	DIM. S
91113-02CA	2.2 mm	13.0
91113-04CA	4.3 mm	13.0
91113-02DA	2.2 mm	15.6
91113-04DA	4.3 mm	15.6
91113-02FA	2.2 mm	21.0
91113-04FA	4.3 mm	21.0



PRESS FIT EMI CLIP INTO GUIDE SLOTS.



VIEW X



SEC.Y-Y

NOTE:

1. EJECT PLATE TO MOVE ALONG INSIDE WALL OF COVER PLATE SMOOTHLY AFTER ASSEMBLING WITH HEADER.
2. MATERIAL :  
PLASTIC GUIDES : POLYPHTHARAMIDE UL94V-0 BLACK  
COVER PLATE : STAINLESS STEEL  
EMI CONTACT : PHOSPHOR BRONZE
3. FINISH :  
EMI CONTACT  
CONTACT AREA 0.5 mm Au.  
UNDERPLATING 1.0 mm Ni.

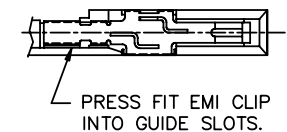
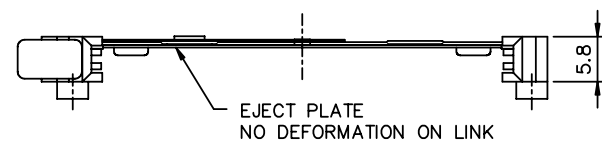
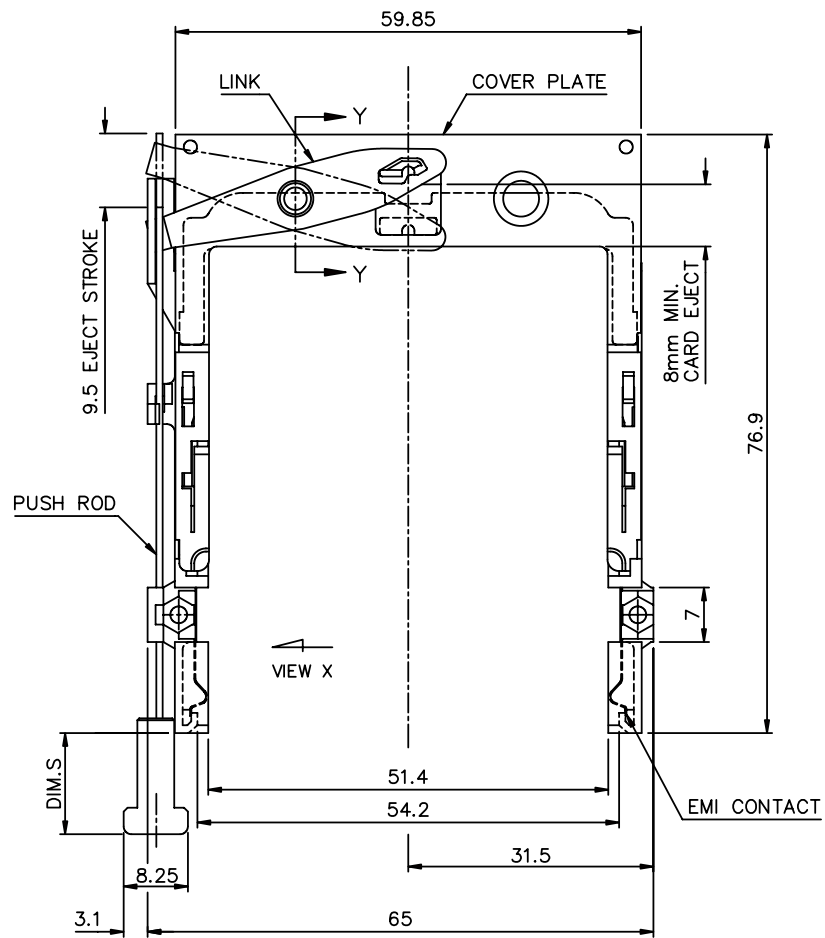
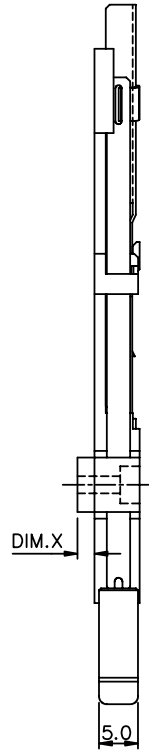
mat'l code				tolerance unless otherwise specified		CUSTOMER COPY		 <a href="http://www.fciconnect.com">www.fciconnect.com</a>		
rev.	ecn no.	dr	date	linear	±0.30		projection 	title NARROW BODY FRONT EJECT TYPE 1/2/3 MECHANISM ASS'Y		
A	T50094	W L	04/06/95							
B	T20234	W L	07/25/02							
C	N06-0034	M Z	02/13/06	angles	± 2°					
				dr	WENDY CHEN	02/13/95	unit	product family	PCMCIA	code
				enqr	JOSEPH HSIA	02/13/95	mm/inch	size	dwg no.	
				chr	JOSEPH HSIA	02/13/95	scale	A3	91113	sheet
				appd	D K WANG	02/13/95	1.5:1			1 OF 2
sheet	revision	C	C							
index	sheet	1	2							

Tous droits strictement réservés. Reproduction ou communication à des tiers sans autorisation écrite de BERG ELECTRONICS.

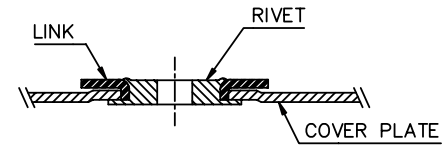
All rights strictly reserved. Reproduction or issue to third parties in any form without the written authority from the proprietor.

Copyright BERG ELECTRONICS by

PRODUCT NUMBER	DIM. X	DIM. S
91113-12CA	2.2 mm	13.0
91113-12CALF	2.2 mm	13.0
91113-14CA	4.3 mm	13.0
91113-12DA	2.2 mm	15.6
91113-14DA	4.3 mm	15.6
91113-12FA	2.2 mm	21.0
91113-14FA	4.3 mm	21.0



VIEW X



SEC.Y-Y

- NOTE:
1. EJECT PLATE TO MOVE ALONG INSIDE WALL OF COVER PLATE SMOOTHLY AFTER ASSEMBLING WITH HEADER.
  2. MATERIAL :  
PLASTIC GUIDES : POLYPHTHARAMIDE UL94V-0 BLACK  
COVER PLATE : STAINLESS STEEL  
EMI CONTACT : PHOSPHOR BRONZE
  3. FINISH :  
EMI CONTACT  
CONTACT AREA 0.5 mm Au.  
UNDERPLATING 1.0 mm Ni.

mat'l code				tolerance unless otherwise specified		CUSTOMER COPY		www.fciconnect.com	
rev.	ecn	no.	dr	date	linear	±0.30	projection	title	
C								NARROW BODY FRONT EJECT TYPE 1/2/3 MECHANISM ASS'Y	
					angles	± 2°		product family PCMCIA	
					dr	WENDY CHEN 02/13/95	unit	code	
					enqr	JOSEPH HSIA 02/13/95	mm/inch	size	
					chr	JOSEPH HSIA 02/13/95	scale	dwg no.	
					appd	D K WANG 02/13/95	1.5:1	A3 91113	
sheet		revision						sheet	
index		sheet						2 of	

# Mouser Electronics

Authorized Distributor

Click to View Pricing, Inventory, Delivery & Lifecycle Information:

[FCI / Amphenol:](#)

[91113-12CA](#) [91113-14CA](#) [91113-12CALF](#) [91113-04CA](#) [91113-02CA](#)