

Tous droits strictement reserves. Reproduction ou communication a des tiers int
 sous quelque forme que ce soit sans autorisation ecrite du proprietaire.
 Droits de reproduction BERG ELECTRONICS by

B

All rights strictly reserved. Reproduction or issue to third parties in any form or by any means, electronic or mechanical, including photocopying, recording, or by any information storage and retrieval system, is prohibited without written permission from the copyright owner.

D

third
om C

by

D

D

DD

DESCRIPTION : ABOVE PCB, DECK AND PUSH ROD LOCATION ARE AS VIEW BY USER.

PRODUCT NO.	PUSH ROD LOCATION		STAND-OFF HEIGHT	CLOSEST TO PCB EJ HDR ASS'Y (B)	FARTHEST FROM PCB EJ HDR ASS'Y (C)	MATING RECEPTACLE (D)	P.C.B SIDE	RECOMMENDED P.C.B LAYOUT (SEE PAGE 6&7)	MOUNT STYLE TO PCB AND PUSH ROD SIDE
(A) 95562-*****	DECK CLOSEST TO PCB	DECK FARTHEST TO PCB							
200CA/200CALF	RIGHT	RIGHT	0.0	95620-002CA/002CALF	95547-005CA/005CALF	RECEPTACLE PART NO. 91931-31169LF	ABOVE	LAYOUT 1	
220CALF	RIGHT	RIGHT	2.2	95547-020CALF	95547-025CALF			LAYOUT 2	
240CALF	RIGHT	RIGHT	4.3	95547-040CALF	95547-045CALF			LAYOUT 3	
241CALF	RIGHT	RIGHT	4.3	95547-041CALF	95547-045CALF			LAYOUT 3	
250CALF	RIGHT	RIGHT	5.0	95547-050CALF	95547-055CALF			LAYOUT 3	
300CA	LEFT	LEFT	0.0	95620-102CA	95547-105CA			LAYOUT 1	
320CALF	LEFT	LEFT	2.2	95547-120CALF	95547-125CALF			LAYOUT 2	
340CALF	LEFT	LEFT	4.3	95547-140CALF	95547-145CALF			LAYOUT 3	
350CALF	LEFT	LEFT	5.0	95547-150CALF	95547-155CALF	RECEPTACLE PART NO. 91931-31169LF	BELOW	LAYOUT 3	
700CA	RIGHT	RIGHT	0.0	95620-502CA	95547-505CA			LAYOUT 4	
720CALF	RIGHT	RIGHT	2.2	95547-520CALF	95547-525CALF			LAYOUT 5	
740CALF	RIGHT	RIGHT	4.3	95547-540CALF	95547-545CALF			LAYOUT 6	
750CALF	RIGHT	RIGHT	5.0	95547-550CALF	95547-555CALF			LAYOUT 6	
800CA	LEFT	LEFT	0.0	95620-602CA	95547-605CA			LAYOUT 4	
820CALF	LEFT	LEFT	2.2	95547-620CALF	95547-625CALF			LAYOUT 5	
840CALF	LEFT	LEFT	4.3	95547-640CALF	95547-645CALF			LAYOUT 6	
850CALF	LEFT	LEFT	5.0	95547-650CALF	95547-655CALF			LAYOUT 6	

ORDERING INFORMATION

NAME	PART NO.	Q'TY
(A) EJECT HEADER ASS'Y	95562-*****LF	1
(D) MATING RECEPTACLE	91931-31169LF	2

OR

ORDERING INFORMATION

NAME	PART NO.	Q'TY
(B) DECK CLOSEST TO PCB	95547-*****LF	1
(C) DECK FARTHEST FROM PCB	95547-*****LF	1
(D) MATING RECEPTACLE	91931-31169LF	2

OR

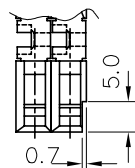
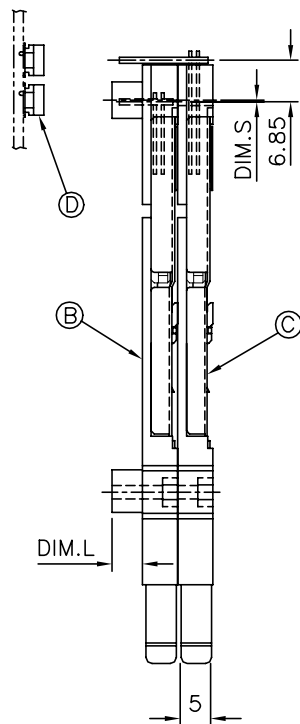
ORDERING INFORMATION

NAME	PART NO.	Q'TY
(B) DECK CLOSEST TO PCB	95620-*****LF	1
(C) DECK FARTHEST FROM PCB	95547-*****LF	1
(D) MATING RECEPTACLE	91931-31169LF	1

mat'l code					tolerance unless otherwise specified		CUSTOMER COPY	www.fciconnect.com	
rev.	ecn	no.	dr	date	linear	± 0.30	projection 	title EJECTOR HEADER ASS'Y 5.0V SMT, TYPE 1/2/3	
M						angles ± 2°			
					dr	WENDY CHEN 02/14/95	unit	product family PCMCIA	
					enrg	JOSEPH HSIAO 02/14/95	mm/inch		
					chr	JOSEPH HSIAO 02/14/95	scale	size dwg no.	
					appd	JENN TSAO 02/14/95	1:1		
sheet	revision							A3 95562	
index	sheet								
								sheet 2 of	

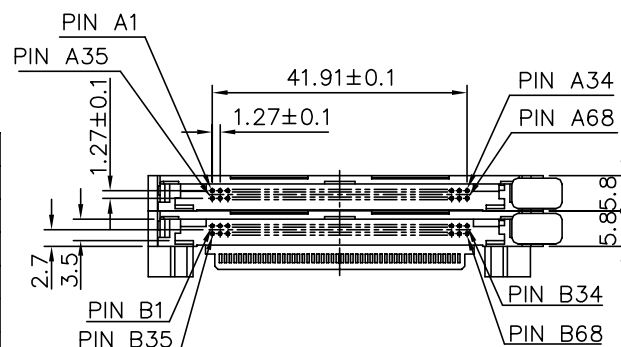
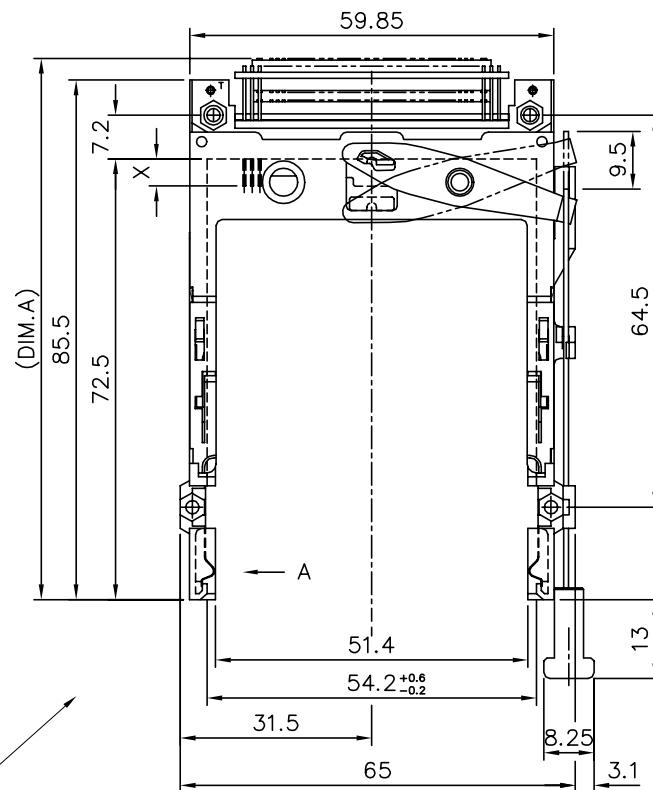
Tous droits strictement réservés. Reproduction ou communication à des tiers sans autorisation écrite du propriétaire.
Droits de reproduction BERG ELECTRONICS bv

All rights strictly reserved. Reproduction or issue to third parties in any form without written authority from the proprietor.
Copyright BERG ELECTRONICS bv

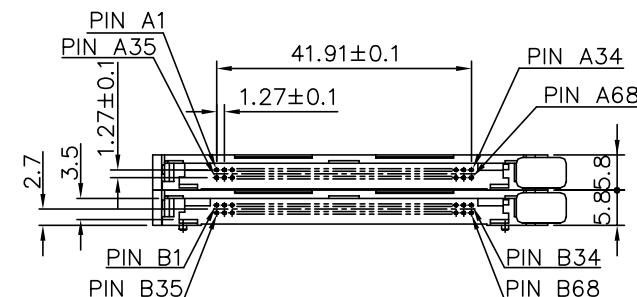
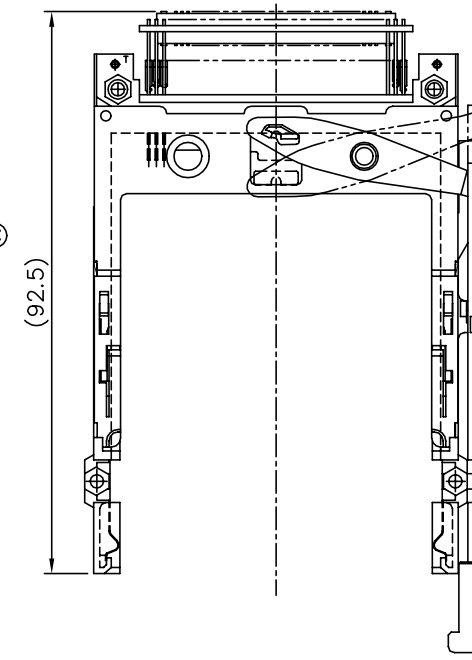
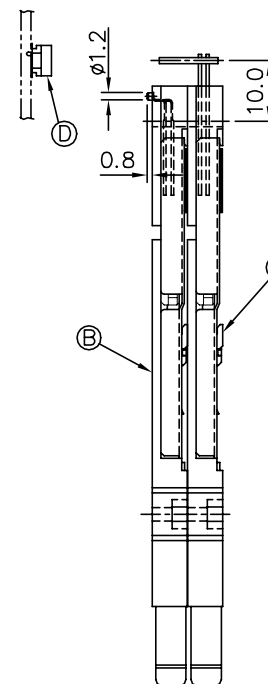


DIRECTION "A"
ONLY FOR -241CALF

④ PART NUMBER	DIM.L	DIM.S	DIM.A
95562-220CA	2.2	2.15	91.5
95562-240CA	4.3	-0.3	89.05
95562-250CA	5.0	-0.3	89.05
95562-220CALF	2.2	2.15	91.5
95562-240CALF	4.3	-0.3	89.05
95562-241CALF	4.3	-0.3	89.05
95562-250CALF	5.0	-0.3	89.05

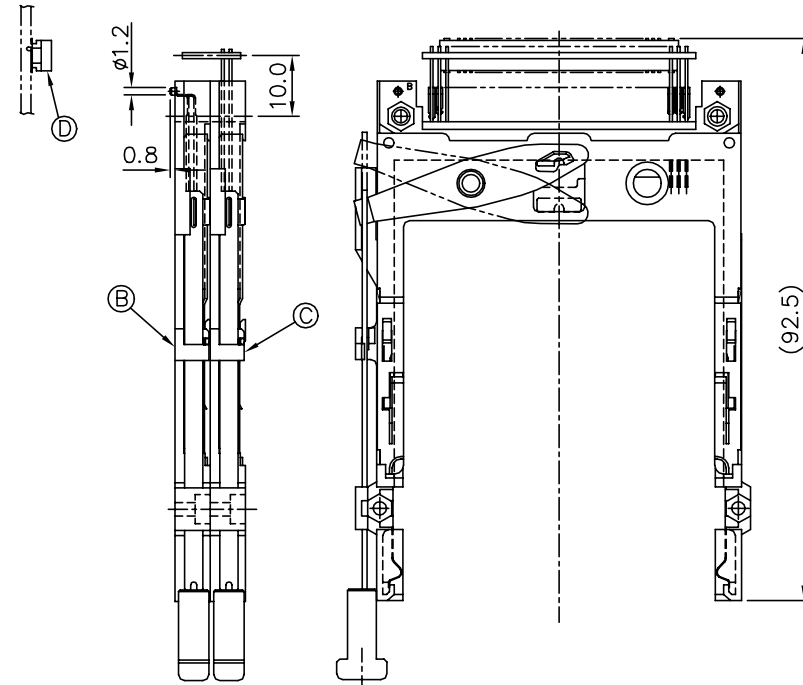
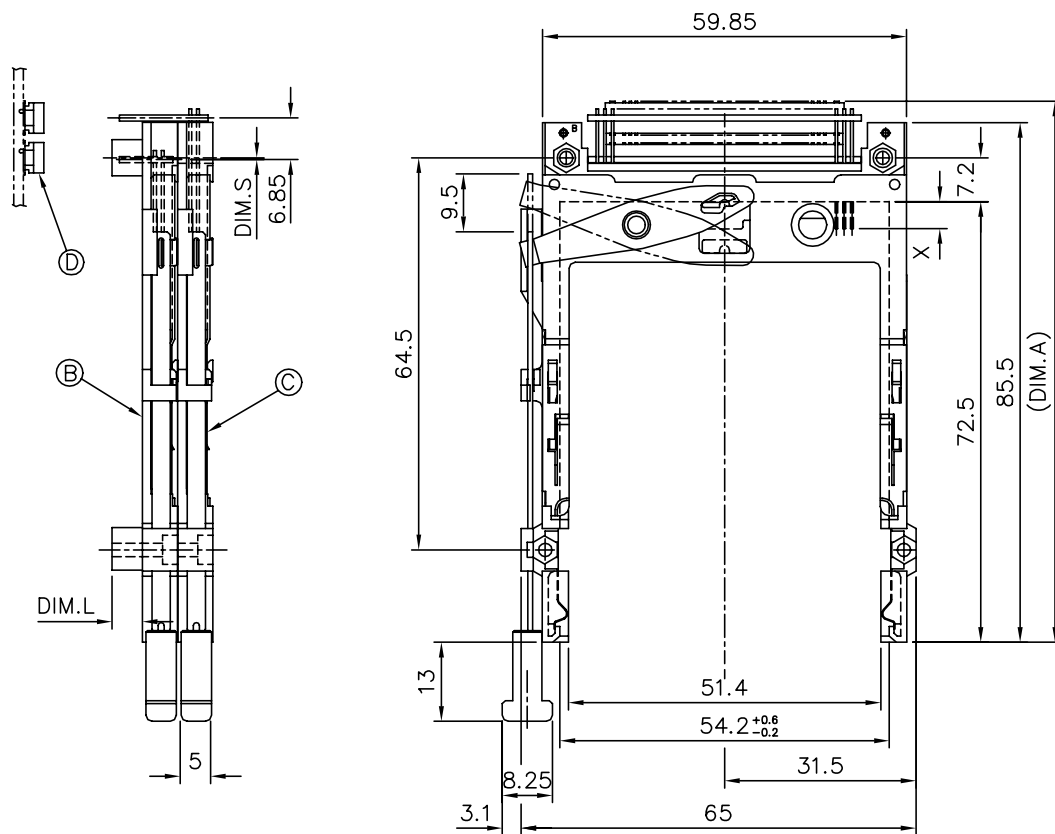


P/N : 95562-2**CA/2**CALF
(ABOVE P.C.B.)

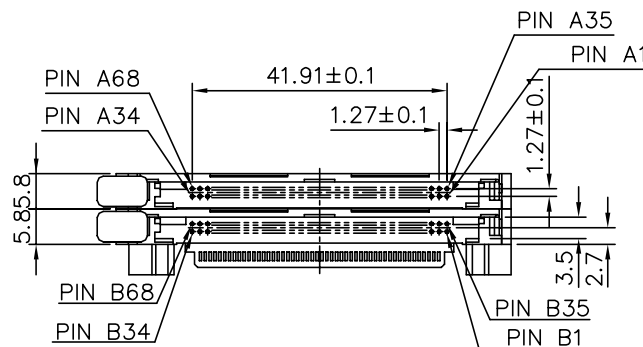


P/N : 95562-200CA
(ABOVE P.C.B.)

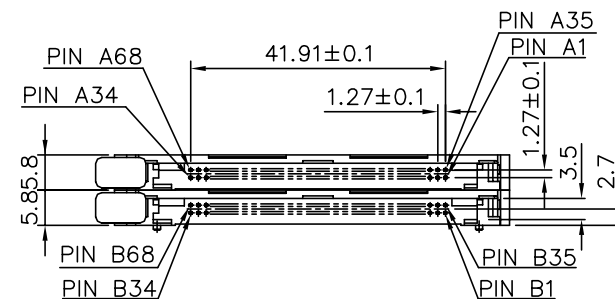
mat'l code				tolerance unless otherwise specified		CUSTOMER COPY		FCI www.fciconnect.com	
rev.	ecn	no.	dr	date	linear	± 0.30	projection	title EJECTOR HEADER ASS'Y 5.0V SMT TYP 1/2/3	
M					angles	± 2°			
					dr	WENDY CHEN 02/14/95	unit	product family PCMCA	
					enrg	JOSEPH HSIA 02/14/95	mm/inch	size	
					chr	JOSEPH HSIA 02/14/95	scale	dwg no.	
					appd	LELAND WANG 02/14/95	1:2:1	A3	
sheet	revision							95562	
index	sheet							3 OF	




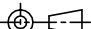
① PART NUMBER	DIM.L	DIM.S	DIM.A
95562-720CA	2.2	2.15	91.5
95562-740CA	4.3	-0.3	89.05
95562-750CA	5.0	-0.3	89.05
95562-720CALF	2.2	2.15	91.5
95562-740CALF	4.3	-0.3	89.05
95562-750CALF	5.0	-0.3	89.05



P/N : 95562-7**CA/7**CALF
 (BELOW P.C.B.)



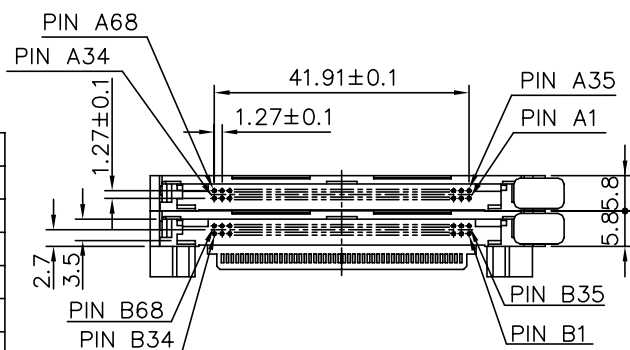
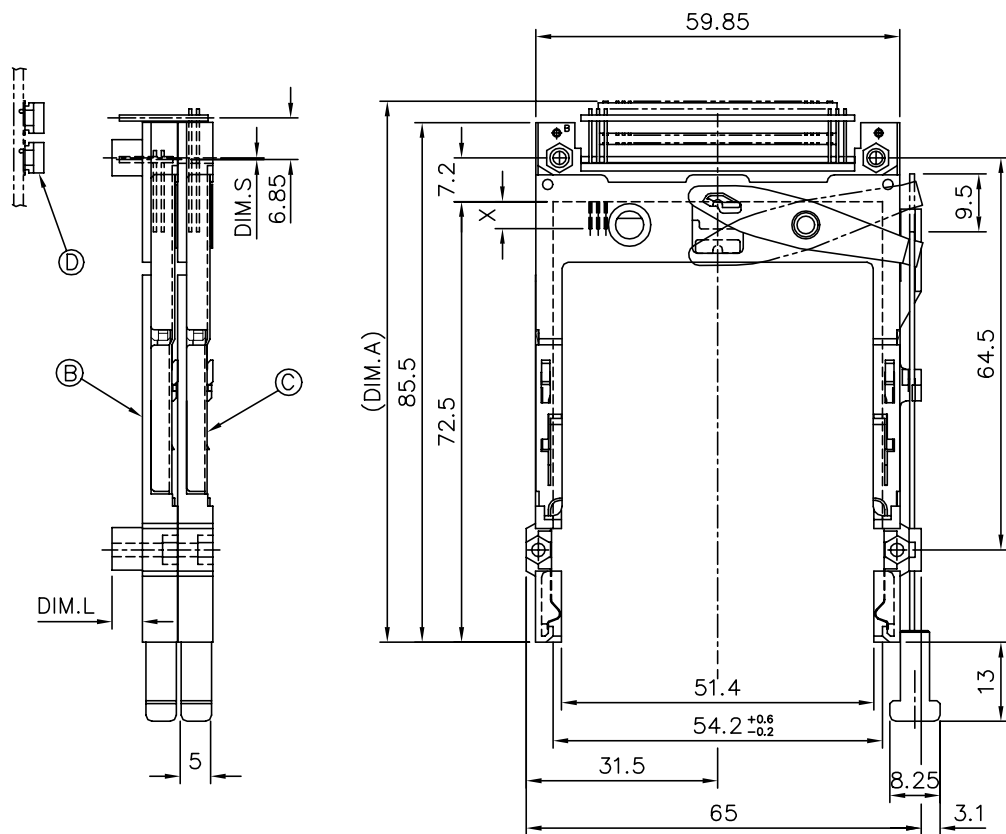
P/N : 95562-700CA
 (BELOW P.C.B.)

mat'l code					tolerance unless otherwise specified			CUSTOMER COPY		 www.fcconnect.com		
rev.	ecn	no.	dr	date	linear	± 0.30		projection 	title EJECTOR HEADER ASS'Y 5.0V SMT TYP 1/2/3			
M						± 2°						
					angles	± 2°						
					dr	WENDY CHEN	02/14/95	unit	product family		PCMCIA	code
					engr	JOSEPH HSIA	02/14/95	mm/inch	size		dwg no.	
					chr	JOSEPH HSIA	02/14/95	scale	A3		95562	
					appd	LELAND WANG	02/14/95	1:2:1			sheet 5 of	
sheet	revision											
index	sheet											

Tous droits strictement réservés. Reproduction ou communication à des tiers sans autorisation écrite du propriétaire.
FCI
Droits de reproduction BERG ELECTRONICS bv

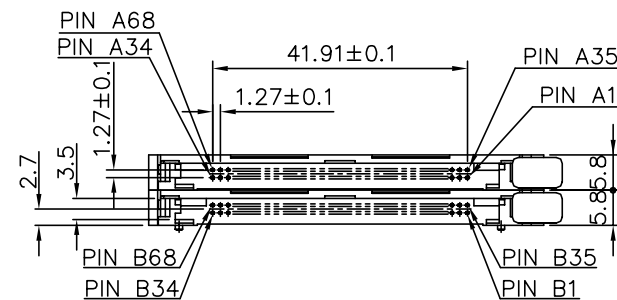
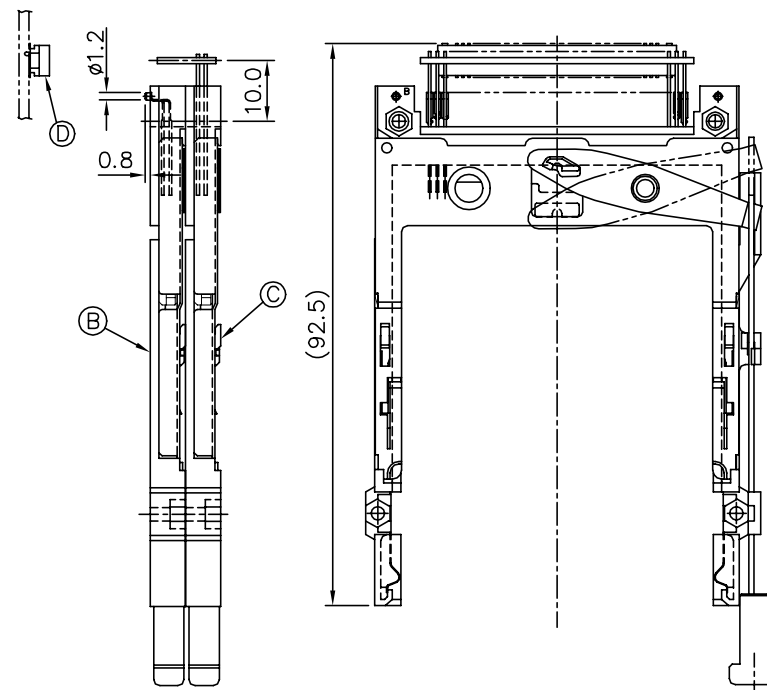


All rights strictly reserved. Reproduction or issue to third parties in any form without written authority from the proprietor.
FCI
Copyright BERG ELECTRONICS bv

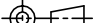


P/N : 95562-8**CA/8**CALF
(BELOW P.C.B.)

(A) PART NUMBER	DIM.L	DIM.S	DIM.A
95562-820CA	2.2	2.15	91.5
95562-840CA	4.3	-0.3	89.05
95562-850CA	5.0	-0.3	89.05
95562-820CALF	2.2	2.15	91.5
95562-840CALF	4.3	-0.3	89.05
95562-850CALF	5.0	-0.3	89.05



P/N : 95562-800CA
(BELOW P.C.B.)

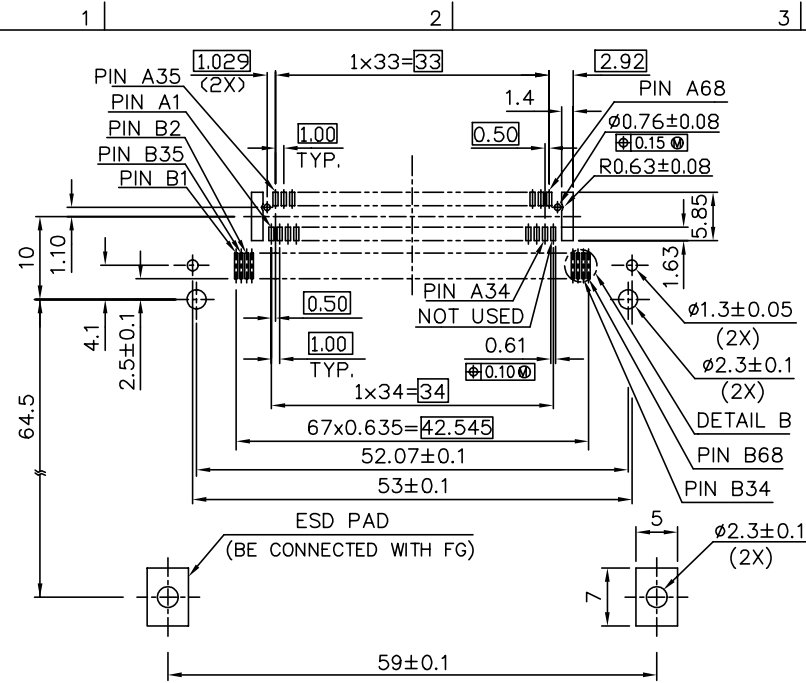
mat'l code					tolerance unless otherwise specified			CUSTOMER COPY		<div>FCI</div> <div>www.fciconnect.com</div>		
rev.	ecn	no.	dr	date	linear	± 0.30		projection 	title EJECTOR HEADER ASS'Y 5.0V SMT TYP 1/2/3			
M												
					angles	± 2°						
					dr	WENDY CHEN	02/14/95	unit	product family		PCMCIA	code
					engr	JOSEPH HSIA	02/14/95	mm/inch	size		dwg no.	
					chr	JOSEPH HSIA	02/14/95	scale	A3		95562	sheet
					appd	LELAND WANG	02/14/95	1.2:1				6 OF
sheet	revision											
index	sheet											

Tous droits strictement réservés. Reproduction ou communication à des tiers sans autorisation écrite du propriétaire.
Property of BERG ELECTRONICS, INC.
Droits de reproduction BERG ELECTRONICS, INC.

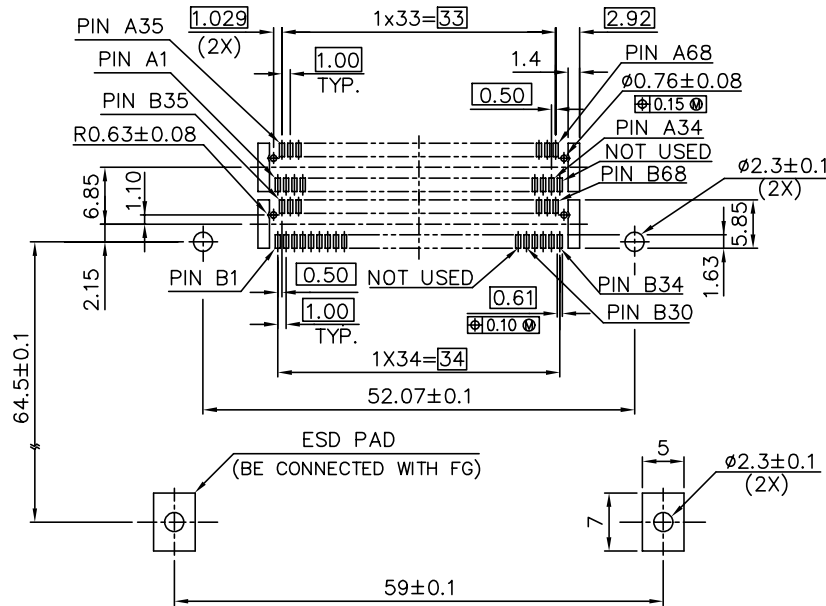


All rights strictly reserved. Reproduction or issue to third parties in any form without written authority from the proprietor.
Property of BERG ELECTRONICS, INC.
Copyright BERG ELECTRONICS, INC.

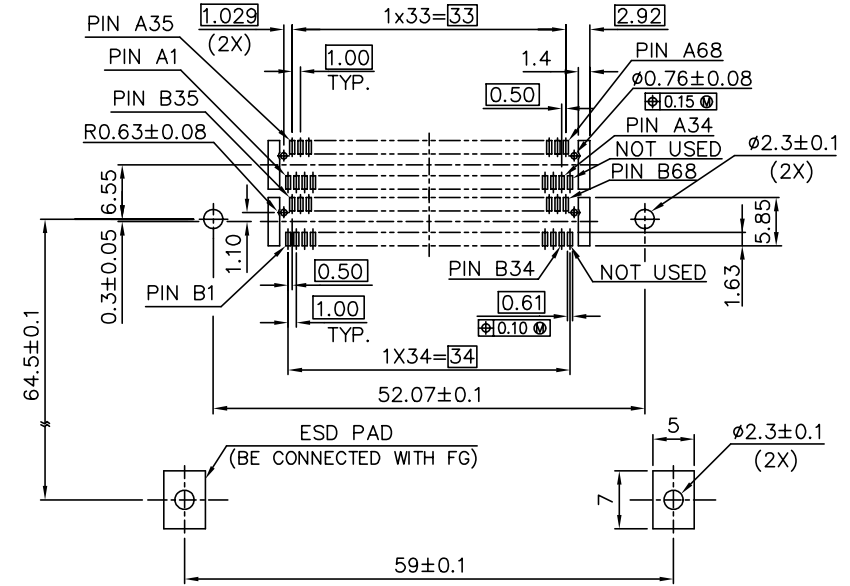
PRODUCT NO.
95562-*****
95562-*****LF



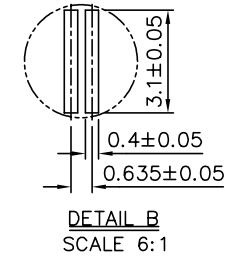
4 CARD INSERTION DIRECTION
RECOMMENDED P.C.B. LAYOUT 1 (MOUNTED SIDE)


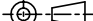
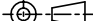


4 CARD INSERTION DIRECTION
RECOMMENDED P.C.B. LAYOUT 2 (MOUNTED SIDE)



4 CARD INSERTION DIRECTION
RECOMMENDED P.C.B. LAYOUT 3 (MOUNTED SIDE)

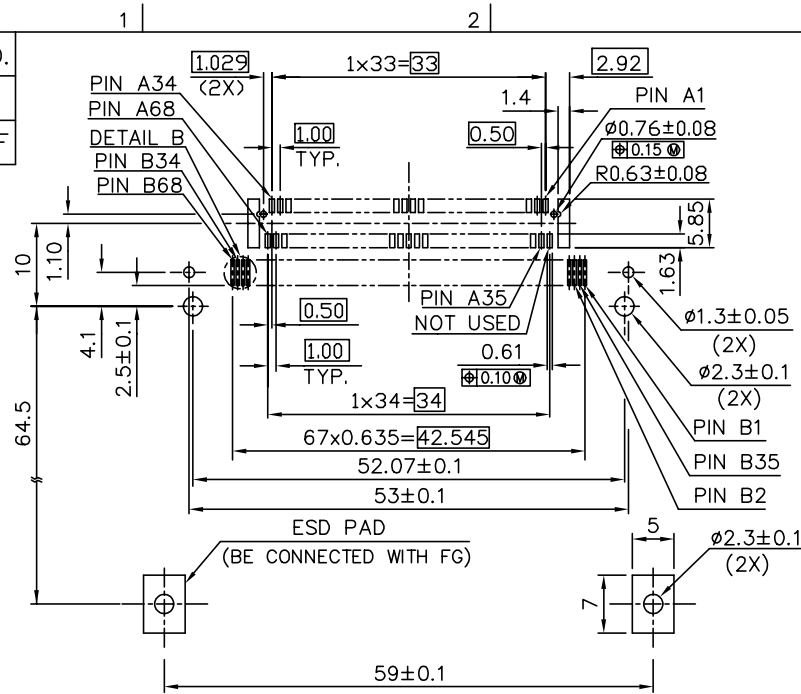


mat'l code					tolerance unless otherwise specified			CUSTOMER COPY		 www.fciconnect.com	
rev.	ecn	no.	dr	date	linear	±0.30		projection 	title EJECTOR HEADER ASS'Y 68POS.SMT TYPE 1/2/3		
M											
					angles	± 2°					
					dr	WENDY CHEN	02/08/95	unit	product family PCMGA		code
					enrg	JOSEPH HSIA	02/08/95	mm/inch	size		dwg no.
					chr	JOSEPH HSIA	02/08/95	scale	A3		95562
					appd	LELAND WANG	02/08/95	1.5:1			sheet 7 OF
sheet	revision										
index	sheet										

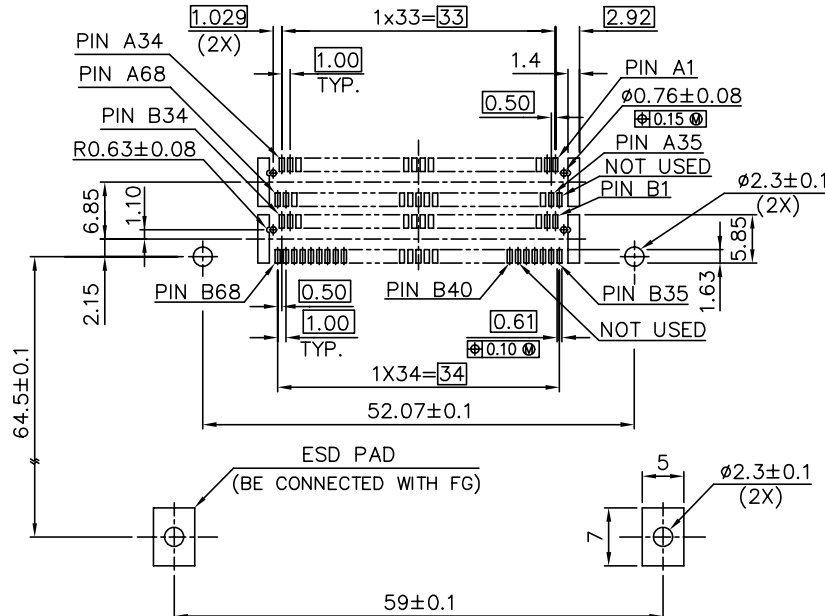
Tous droits strictement réservés. Reproduction ou communication à des tiers sans autorisation écrite du propriétaire.
Property of BERG ELECTRONICS S.A.
Droits de reproduction BERG ELECTRONICS S.A.

All rights strictly reserved. Reproduction or issue to third parties in any form without written authority from the proprietor.
Property of BERG ELECTRONICS S.A.
Copyright BERG ELECTRONICS S.A.

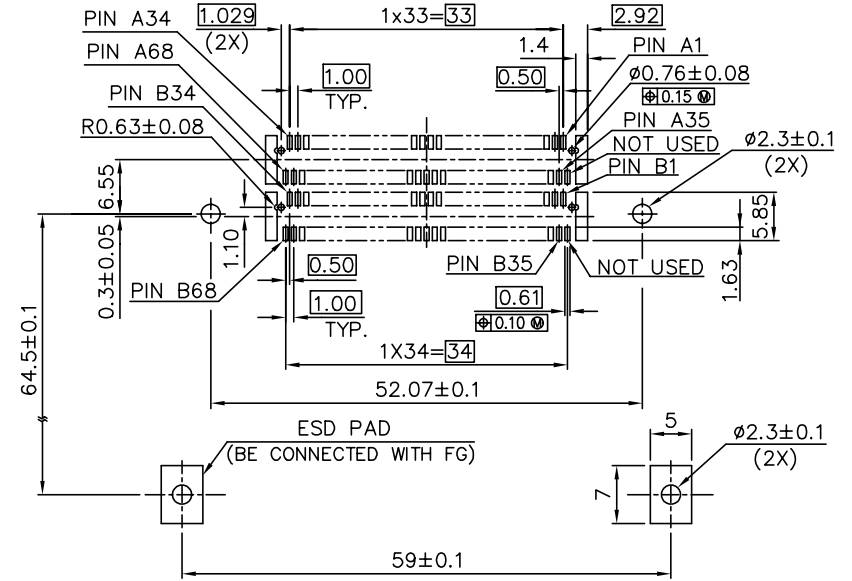
PRODUCT NO.
95562-*****
95562-*****LF



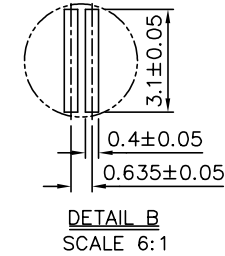
4 CARD INSERTION DIRECTION
RECOMMENDED P.C.B. LAYOUT 4 (MOUNTED SIDE)

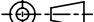


4 CARD INSERTION DIRECTION
RECOMMENDED P.C.B. LAYOUT 5 (MOUNTED SIDE)



4 CARD INSERTION DIRECTION
RECOMMENDED P.C.B. LAYOUT 6 (MOUNTED SIDE)



mat'l code					tolerance unless otherwise specified			CUSTOMER COPY		<div>FCI</div> <div>www.fciconnect.com</div>	
rev.	ecn	no.	dr	date	linear	±0.30		projection 	title EJECTOR HEADER ASS'Y 68POS.SMT TYPE 1/2/3		
M											
					angles	± 2°					
					dr	WENDY CHEN	02/08/95	unit	product family PCM3A		code
					enrg	JOSEPH HSIA	02/08/95	mm/inch	size		
					chr	JOSEPH HSIA	02/08/95	scale	dwg no.		
					appd	LELAND WANG	02/08/95	1.5:1	A3		
sheet	revision										
index	sheet										

PART NUMBER DESCRIPTION :

95562-□□□□□□□□

LEAD FREE OPTION : LF

CARDBUS TYPE
S: FORCE-SAVING

BUTTON COLOR
A : BLACK

C : 13.0 mm

STAND-OFF

00 : 0.0 mm
06 : 0.6 mm
20 : 2.0 mm
22 : 2.2 mm
40 : 4.0 mm
43 : 4.3 mm
50 : 5.0 mm

PUSH ROD

TOP MOUNT	BOTTOM MOUNT
0 : RIGHT-LEFT	5 : RIGHT-LEFT
1 : LEFT-RIGHT	6 : LEFT-RIGHT
2 : RIGHT-RIGHT	7 : RIGHT-RIGHT
3 : LEFT-LEFT	8 : LEFT-LEFT

NOTES:

- 8mm MIN. CARD EJECT.
- EJECT TRAVEL: 9.5mm
- MATERIAL

3.1 HEADER ASS'Y :

PLASTIC :HOUSING ...HIGH TEMPERATURE THERMOPLASTIC UL94V-0 BLACK
PIN :COPPER ALLOY
PCB :FR4

3.2 EJECT MECHANISM ASS'Y :

PLASTIC :GUIDE:HIGH TEMPERATURE THERMOPLASTIC UL94V-0 BLACK
:BUTTON:HIGH TEMPERATURE THERMOPLASTIC UL94V-0 BLACK

PLATE :STAINLESS
EMI CONTACT:PHOSPHOR BRONZE

3.3 RECEPTACLE :

PLASTIC : HIGH TEMPERATURE THERMOPLASTIC UL94V-0, NATURAL.
PIN: BeCu

4. FINISH (PIN)

UNDER PLATING :0.5μm MIN. Ni
CONTACT AREA :0.076 μm MIN. GOLD



SOLDER TAIL : 2.5μm MIN. Sn-Pb(FOR TIN LEAD OPTION)
: 2.5μm MIN. PURE TIN (FOR LEAD FREE OPTION)

- ⑤ PUSH ROD LOCATION AND P.C.B. SIDE ARE AS
APPEARS INSTALLED.

6. DIM "X"

4.25±0.1	3.5±0.1	5.0±0.1
OTHERS	36,67	1,17,34,35,51,68

- DO NOT TOUCH AND KEEP CLEAN THE SURFACES OF PCB OF HEADER.
- IF LEAD FREE P/N.THE HOUSING WILL WITHSTAND EXPOSURE TO 260°C
PEAK TEMPERATURE FOR 10 SECONDS IN A WAVE SOLDER
APPLICATION WITH A 1.00MM MINIMUM THICK CIRCUIT BOARD.
- IF LEAD FREE P/N.THE PRODUCT MEETS EUROPEAN UNION DIRECTIVES
AND OTHER COUNTRY REGULATIONS AS DESCRIBED IN GS-22-008
- LEAD FREE P/N PACKAGING MEETS GS-14-920 SPECIFICATION
- PRODUCT SPEC:110-263

mat'l code				tolerance unless otherwise specified		CUSTOMER COPY	 www.fciconnect.com		
rev.	ecn no.	dr	date	linear	±0.30				
M						projection			
				angles	± 2°				
				dr	WENDY CHEN02/29/00	unit	product family PDMCIA		
				enrg	JOSEPH HSIA02/29/00	mm/inch			
				chr	JOSEPH HSIA02/29/00	scale	size A3		
				appd	LELAND WANG02/29/00	1:1			
sheet	revision						title EJECTOR HEADER ASS'Y 68POS. SMT, TYPE 1/2/3		
index	sheet								
							dwg no. 95562		
							sheet 9 OF		

Mouser Electronics

Authorized Distributor

Click to View Pricing, Inventory, Delivery & Lifecycle Information:

[FCI / Amphenol:](#)

[95562-350CALF](#) [95562-220CALF](#) [95562-240CALF](#) [95562-250CALF](#) [95562-320CALF](#)