



FCIconnect.com

Copyright FCI

TIN LEAD PART NUMBER

SHELL	A±0.38	B±0.12	C±0.10	D±0.25	E±0.07	PART NUMBER	PART NUMBER
09	30.81	24.99	18.00	16.21	10.96	D09S81C4G*00	D09S81C6G*00
15	39.14	33.32	26.32	24.54	19.18	D15S81C4G*00	D15S81C6G*00
25	53.03	47.04	40.04	38.25	33.12	D25S81C4G*00	D25S81C6G*00
37	69.32	63.50	56.50	54.71	49.68	D37S81C4G*00	D37S81C6G*00
Gold flash						0.76 μ gold	

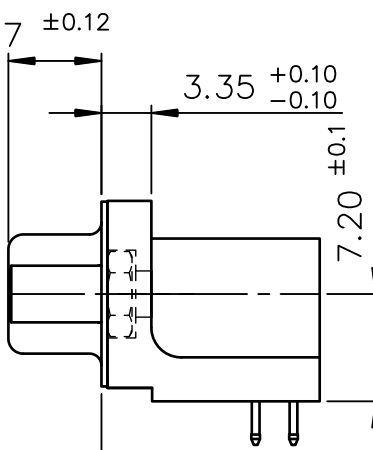
LEAD FREE PART NUMBER

SHELL	A±0.38	B±0.12	C±0.10	D±0.25	E±0.07	PART NUMBER	PART NUMBER
09	30.81	24.99	18.00	16.21	10.96	D09S81C4G*00LF	D09S81C6G*00LF
15	39.14	33.32	26.32	24.54	19.18	D15S81C4G*00LF	D15S81C6G*00LF
25	53.03	47.04	40.04	38.25	33.12	D25S81C4G*00LF	D25S81C6G*00LF
37	69.32	63.50	56.50	54.71	49.68	D37S81C4G*00LF	D37S81C6G*00LF
Gold flash						0.76 μ gold	

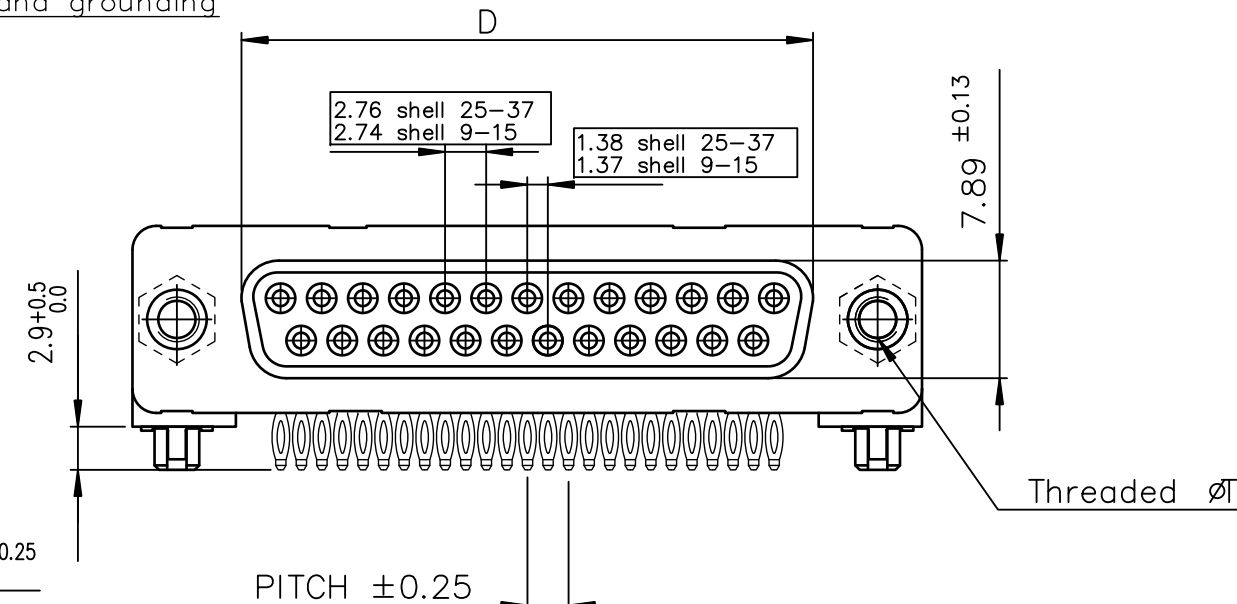
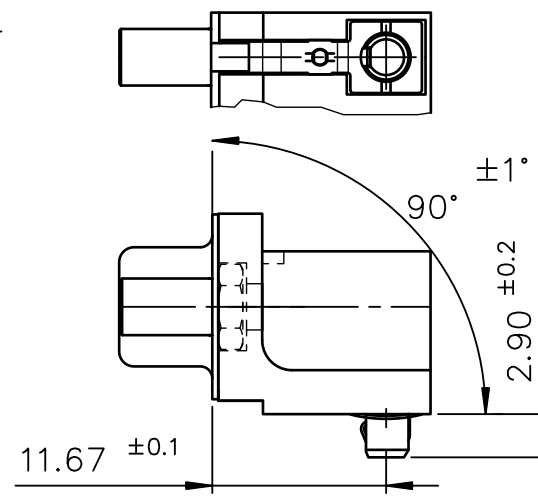
Threaded ØT M3 = I
Threaded ØT 4.40 = V

Threaded ØT M3 = I
Threaded ØT 4.40 = V

view shown without plastic pin and grounding

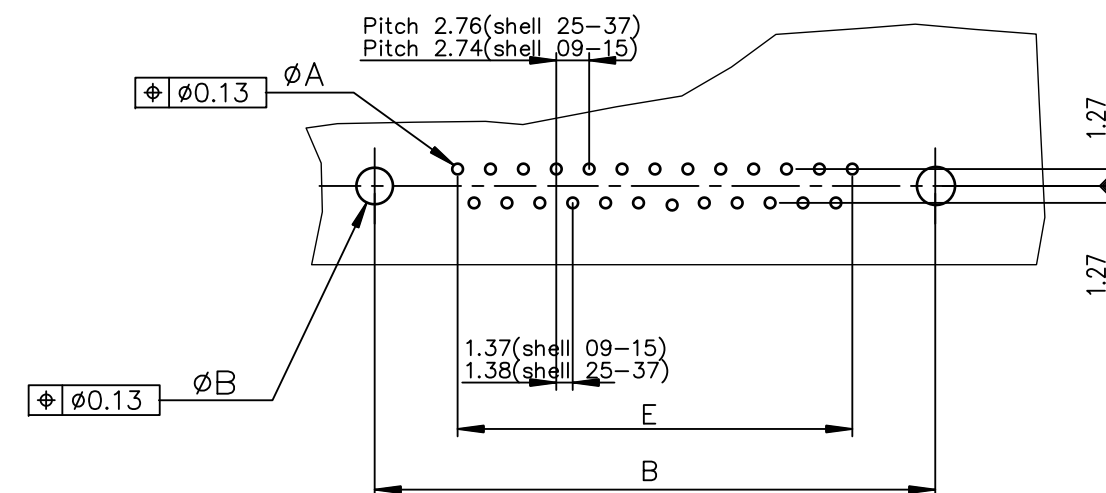


Detail of grounding strip



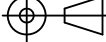


PC card drilling dimensions(after plating)

(thickness 1.60 ±0.20)



GENERAL CHARACTERISTICS AND ROHS INFORMATIONS:

SEE DRAWING C01-8646-0001

mat'l. code —				surface ISO 1302 ✓			tolerance ISO 406 ISO 1101			projection 		product family D—SUB									
ltr	ecn no	dr	date	tolerances unless otherwise specified					title FEMALE CONNECTOR DELTA—D EUROPE RIGHT ANGLED PRESS FIT												
J	ELX-I-18050	MP	2014/06/23	angles	linear	.0±.01															
						.00±.01															
				0°±2°		.000±.01		scale 2:1		<div>dwg no C01—8646—0544</div> <div>sheet 1 of 1</div> <div>A3</div> <div>type Product Customer Drawing</div>											
				dr	PESSON		1997/10/15														
				engr	MITHUN PAUL		2014/06/23														
				chr	ALIAS BABU		2014/06/23														
				appd	BIJU K PAUL		2014/06/23														
sheet index		revision		J																	
		sheet		1																	

Mouser Electronics

Authorized Distributor

Click to View Pricing, Inventory, Delivery & Lifecycle Information:

[FCI / Amphenol:](#)

[D09S81C6GV00LF](#) [D25S81C6GV00LF](#) [D37S81C6GV00LF](#) [D15S81C4GV00LF](#) [D25S81C4GV00LF](#)
[D09S81C6GV00](#) [D25S81C6GV00](#) [D37S81C6GV00](#) [D15S81C6GV00LF](#)