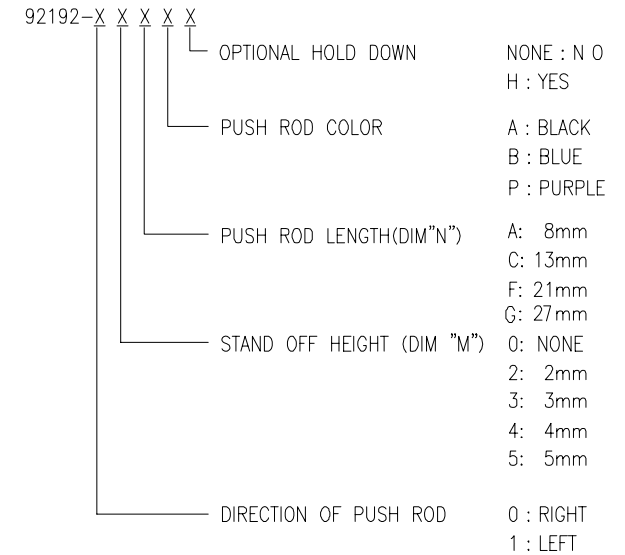


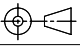
RODUCT NO.

92192

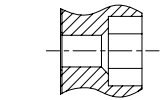
| PRODUCT NO. | STAND OFF(mm) | DIM "N" (mm) | PUSH ROD COLOR | HOLD DOWN | SHEET NO. |
|-------------|------------------|-----------------|-------------------|-----------|-----------|
| 92192-XXXXX | | | | | |
| 00AA | 0 | 8 | BLACK | NONE | NO.2 |
| 00AAH | 0 | 8 | BLACK | YES | |
| 00CA | 0 | 13 | BLACK | NONE | |
| 00CAH | 0 | 13 | BLACK | YES | |
| 00CB | 0 | 13 | BLUE | NONE | |
| 00CBH | 0 | 13 | BLUE | YES | |
| 00CP | 0 | 13 | PURPLE | NONE | |
| 00CPH | 0 | 13 | PURPLE | YES | |
| 00FA | 0 | 21 | BLACK | NONE | |
| 00FAH | 0 | 21 | BLACK | YES | |
| 02CA | 2 | 13 | BLACK | NONE | NO.3 |
| 02CB | 2 | 13 | BLUE | NONE | |
| 04CA | 4 | 13 | BLACK | NONE | |
| 05CA | 5 | 13 | BLACK | NONE | |
| 05CAH | 5 | 13 | BLACK | YES | NO.4 |
| 10AA | 0 | 8 | BLACK | NONE | |
| 10AAH | 0 | 8 | BLACK | YES | |
| 10CA | 0 | 13 | BLACK | NONE | |
| 10CAH | 0 | 13 | BLACK | YES | |
| 10CB | 0 | 13 | BLUE | NONE | |
| 10CBH | 0 | 13 | BLUE | YES | |
| 10CP | 0 | 13 | PURPLE | NONE | |
| 10CPH | 0 | 13 | PURPLE | YES | |
| 10FA | 0 | 21 | BLACK | NONE | |
| 10FAH | 0 | 21 | BLACK | YES | NO.5 |
| 12CA | 2 | 13 | BLACK | NONE | |
| 12CAH | 2 | 13 | BLACK | YES | |
| 12CB | 2 | 13 | BLUE | NONE | |
| 12FA | 2 | 21 | BLACK | NONE | |
| 13CA | 3 | 13 | BLACK | NONE | |
| 13CAH | 3 | 13 | BLACK | YES | |
| 14CA | 4 | 13 | BLACK | NONE | |
| 15CA | 5 | 13 | BLACK | NONE | |

| PRODUCT NO. | STAND OFF(mm) | DIM "N" (mm) | PUSH ROD COLOR | HOLD DOWN | SHEET NO. |
|-------------|------------------|-----------------|-------------------|-----------|-----------|
| 92192-XXXXX | | | | | |
| 00AALF | 0 | 8 | BLACK | NONE | NO.2 |
| 00AAHLF | 0 | 8 | BLACK | YES | |
| 00CALF | 0 | 13 | BLACK | NONE | |
| 00CAHLF | 0 | 13 | BLACK | YES | |
| 00CBLF | 0 | 13 | BLUE | NONE | |
| 00CBHLF | 0 | 13 | BLUE | YES | |
| 00CPLF | 0 | 13 | PURPLE | NONE | |
| 00CPHLF | 0 | 13 | PURPLE | YES | |
| 00FALF | 0 | 21 | BLACK | NONE | |
| 00FAHLF | 0 | 21 | BLACK | YES | |
| 02CALF | 2 | 13 | BLACK | NONE | NO.3 |
| 02CBLF | 2 | 13 | BLUE | NONE | |
| 04CALF | 4 | 13 | BLACK | NONE | |
| 05CALF | 5 | 13 | BLACK | NONE | |
| 05CAHLF | 5 | 13 | BLACK | YES | NO.4 |
| 10AALF | 0 | 8 | BLACK | NONE | |
| 10AAHLF | 0 | 8 | BLACK | YES | |
| 10CALF | 0 | 13 | BLACK | NONE | |
| 10GALF | 0 | 27 | BLACK | NONE | |
| 10CAHLF | 0 | 13 | BLACK | YES | |
| 10CBLF | 0 | 13 | BLUE | NONE | |
| 10CBHLF | 0 | 13 | BLUE | YES | |
| 10CPLF | 0 | 13 | PURPLE | NONE | |
| 10CPHLF | 0 | 13 | PURPLE | YES | |
| 10FALF | 0 | 21 | BLACK | NONE | NO.5 |
| 10FAHLF | 0 | 21 | BLACK | YES | |
| 12CALF | 2 | 13 | BLACK | NONE | |
| 12CAHLF | 2 | 13 | BLACK | YES | |
| 12GALF | 2 | 27 | BLACK | NONE | |
| 12CBLF | 2 | 13 | BLUE | NONE | |
| 12FALF | 2 | 21 | BLACK | NONE | |
| 13CALF | 3 | 13 | BLACK | NONE | |
| 13CAHLF | 3 | 13 | BLACK | YES | NO.5 |
| 14CALF | 4 | 13 | BLACK | NONE | |
| 15CALF | 5 | 13 | BLACK | NONE | |



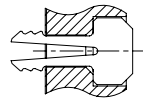
| | | | | | | | | | |
|-------------|----------------|-----|----------|---------------------------------------|-----------|---|---|--|--------------|
| mat'l. code | | | | surface | tolerance | projection | product family PCMCIA | | |
| ltr | ecn no | dr | date | tolerances unless otherwise specified | |  | title | | |
| P | ELX-N-20919 | J.H | 05/27/15 | angles | linear | | 68P EJECTOR HEADER TYPE I/II/III MECHANISM ASS'Y | | |
| | | | | | | MM | | | |
| | | | | | | scale | | | |
| | | | | dr | M.KAJIURA | 7/22/99 | dwg no | | sheet 1 of 5 |
| | | | | enr | M.KAJIURA | 7/22/99 | 92192 | | A4 |
| | | | | chr | M.KAJIURA | 7/22/99 | | | |
| | | | | appd | M.KAJIURA | 7/22/99 | | | |
| sheet index | revision sheet | | | | | | type CUSTOMER | | Drawing |

| |
|---------------------|
| ODUCT NO. |
| 192-00AA/00AALF |
| 192-00AAH/00AAHLF |
| 192-00CA/00CALF |
| 192-00CAH/00CAHLF |
| 192-00CB/00CBLF |
| 192-00CBH/00CBHLF |
| 192-00CP/00CPLF |
| 92192-00CPH/00CPHLF |
| 92192-00FA/00FALF |
| 92192-00FAH/00FAHLF |



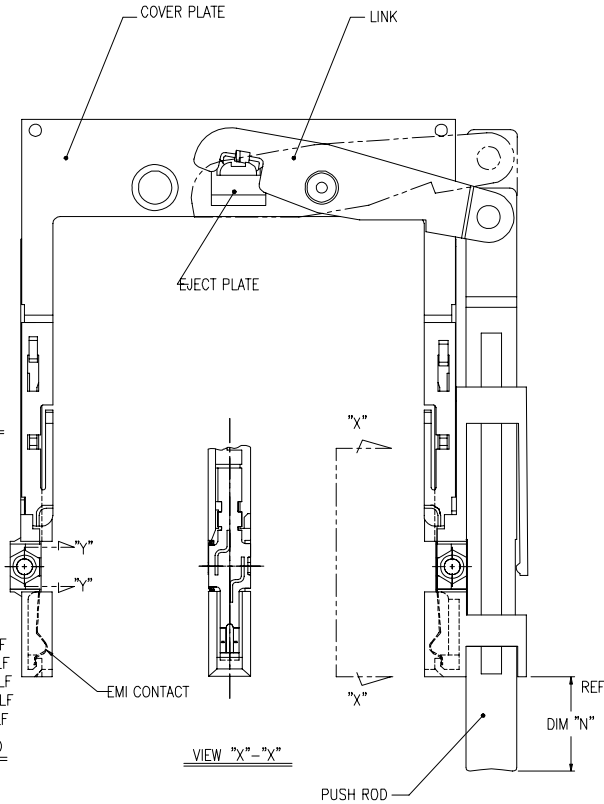
92192-00AA/00AALF
-00CA/00CALF
-00CB/00CBLF
-00CP/00CPLF
-00FA/00FALF

SECTION "Y"- "Y"(4/1)
NON HOLD-DOWN
TYP(2)



92192-00AAH/00AAHLF
-00CAH/00CAHLF
-00CBH/00CBHLF
-00CPH/00CPHLF
-00FAH/00FAHLF

SECTION "Y"- "Y"(4/1)
OPTIONAL HOLD-DOWN
TYP(2)



NOTE

1. EJECT PLATE MOVE ALONG INSIDE WALL OF COVER PLATE
SMOOTHLY AFTER ASSEMBLING WITH HDR ASSY.

② MATERIAL

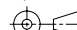


GUIDE : POLYPHTHARAMID UL94V-0 BLACK
PUSH ROD : FLAME RETARDANT UL94V-0 BLACK/BLUE
PLATE : STAINLESS
EMI CONTACT : PHOSPHOR BRONZE
HOLD-DOWN : BRASS

③ FINISH

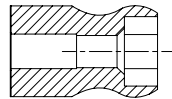
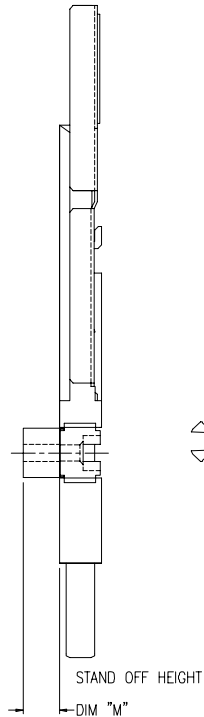
EMI CONTACT
UNDER PLATING : 2.0µm MIN. Ni
CONTACT AREA : 0.5µm MIN. Au

4. RECOMMENDED PCB HOLE (OPTIONAL HOLD-DOWN) : 2.3±0.1



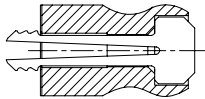
| | | | | | | | | | | | | | |
|-------------|--------|----------------|------|---------------------------------------|-----------|-----------|--|---|---|---|--------------|--|---------|
| mat'l. code | | | | surface | | tolerance | | projection | | product family PCMCIA | | | |
| ltr | ecn no | dr | date | tolerances unless otherwise specified | | | |  |  | title | | | |
| P | | | | angles | linear | ±0.30 | | | | 68P EJECTOR HEADER TYPE I/II/III MECHANISM ASS'Y | | | |
| | | | | ±2° | | | | | | scale | | | |
| | | | | dr | M.KAJIURA | 7/22/99 | |  | dwg no | | sheet 2 of 5 | | size |
| | | | | enrg | M.KAJIURA | 7/22/99 | | | 92192 | | A4 | | |
| | | | | chr | M.KAJIURA | 7/22/99 | | | | | | | |
| | | | | appd | M.KAJIURA | 7/22/99 | | | type | | CUSTOMER | | Drawing |
| sheet index | | revision sheet | | | | | | | | | | | |

| PRODUCT NO. |
|---------------------|
| 92192-02CA/02CALF |
| 92192-02CB/02CBLF |
| 92192-04CA/04CALF |
| 92192-05CA/05CALF |
| 92192-05CAH/05CAHLF |



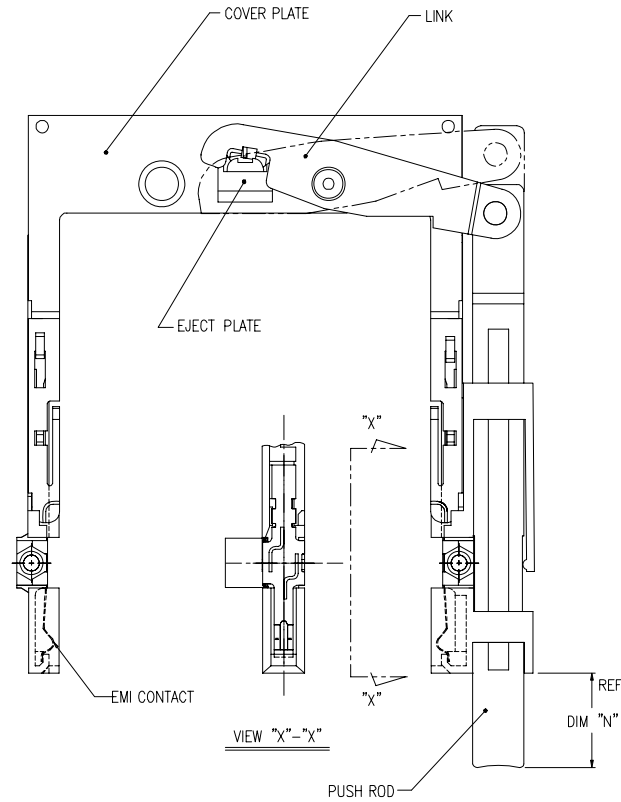
92192-02CA/02CALF
-02CB/02CBLF
-04CA/04CALF
-05CA/05CALF

SECTION "Y"-"Y"(4/1)
NON HOLD-DOWN
TYP(2)



92192-05CAH/05CAHLF

SECTION "Y"-"Y"(4/1)
OPTIONAL HOLD-DOWN
TYP(2)



NOTE

1. EJECT PLATE MOVE ALONG INSIDE WALL OF COVER PLATE
SMOOTHLY AFTER ASSEMBLING WITH HDR ASSY.

② MATERIAL

GUIDE : POLYPHTHARAMID UL94V-0 BLACK
PUSH ROD : FLAME RETARDANT UL94V-0 BLACK
PLATE : STAINLESS
EMI CONTACT : PHOSPHOR BRONZE
STAND OFF : ZINC ALLOYS DIE CASTING

③ FINISH

EMI CONTACT
UNDER PLATING : 2.0μm MIN. Ni
CONTACT AREA : 0.5μm MIN. Au
STAND OFF : 3~5μm Ni OVER 5~10μm Cu.

| mat'l. code | | | | surface | | tolerance | projection | product family PCMCIA | | |
|-------------|----------|-------|------|---------------------------------------|-----------|-----------|------------|---|--|--|
| ltr | ecn no | dr | date | tolerances unless otherwise specified | | | | title | | |
| P | | | | angles | linear | ±0.30 | MM | 68P EJECTOR HEADER TYPE I/II/III MECHANISM ASS'Y | | |
| | | | | ±2° | | | | | | |
| | | | | dr | M.KAJIURA | 7/22/99 | scale | dwg no sheet 3 of 5 size | | |
| | | | | enr | M.KAJIURA | 7/22/99 | | 92192 A4 | | |
| | | | | chr | M.KAJIURA | 7/22/99 | | type CUSTOMER Drawing | | |
| | | | | appd | M.KAJIURA | 7/22/99 | | | | |
| sheet index | revision | sheet | | | | | | | | |

PRODUCT NO.

92192-10AA/10AALF

92192-10AAH/10AAHLF

92192-10CA/10CALF

92192-10CAH/10CAHLF

92192-10CB/10CBLF

92192-10CBH/10CBHLF

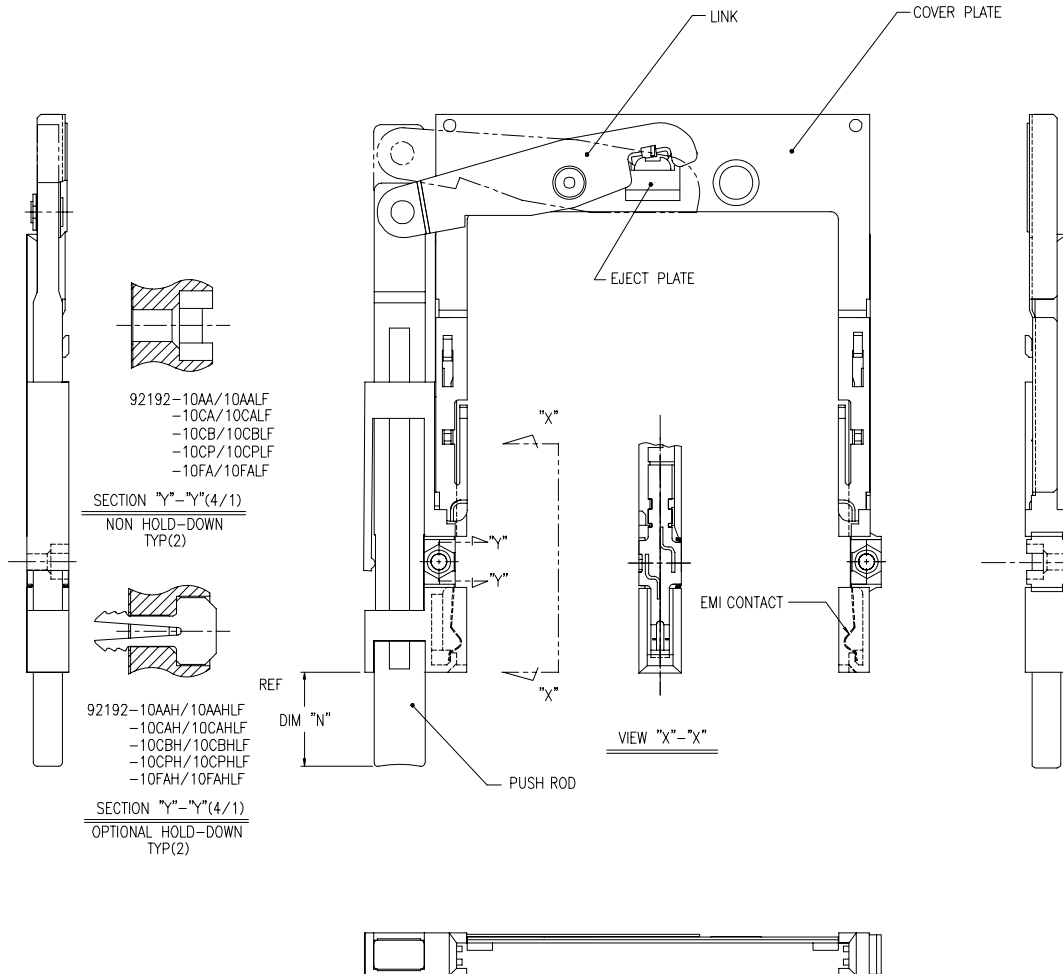
92192-10CP/10CPLF

92192-10CPH/10CPHLF

92192-10FA/10FALF

92192-10FAH/10FAHLF

92192-10GALF



NOTE

1. EJECT PLATE MOVE ALONG INSIDE WALL OF COVER PLATE SMOOTHLY AFTER ASSEMBLING WITH HDR ASSY.


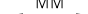

② MATERIAL

GUIDE : POLYPHTHARAMID UL94V-0 BLACK
PUSH ROD : FLAME RETARDANT UL94V-0 BLACK/BLUE
PLATE : STAINLESS
EMI CONTACT : PHOSPHOR BRONZE
HOLD-DOWN : BRASS

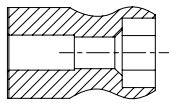
③ FINISH

EMI CONTACT
UNDER PLATING : 2.0 μ m MIN. Ni
CONTACT AREA : 0.5 μ m MIN. Au

4. RECOMMENDED PCB HOLE (OPTIONAL HOLD-DOWN) : 2.3 \pm 0.1

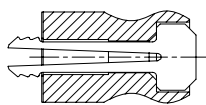
| | | | | | | | | | | | | | | | | | | | |
|-------------|--------|----------------|------|---------------------------------------|-----------|-----------|---------|---|---|---|--------|----------------------------------|--------------|--|------------------|--|------|--|--|
| mat'l. code | | | | surface | | tolerance | | projection | | product family | | | | | | | | | |
| | | | | | | | |  | | PCMCIA | | | | | | | | | |
| ltr | ecn no | dr | date | tolerances unless otherwise specified | | | | | | title | | | | | | | | | |
| P | | | | angles | | linear | | ±0.30 | |  | | 68P EJECTOR HEADER TYPE I/II/III | | | | | | | |
| | | | | ±2' | | | | | | scale | | MECHANISM ASS'Y | | | | | | | |
| | | | | dr | M.KAJIURA | | 7/22/99 | |  | | dwg no | | sheet 4 of 5 | | | | size | | |
| | | | | enrg | M.KAJIURA | | 7/22/99 | | | | 92192 | | A4 | | | | | | |
| | | | | chr | M.KAJIURA | | 7/22/99 | | | | | | | | | | | | |
| | | | | appd | M.KAJIURA | | 7/22/99 | | | | type | | | | CUSTOMER Drawing | | | | |
| sheet index | | revision sheet | | | | | | | | | | | | | | | | | |

| PRODUCT NO. |
|---------------------|
| 92192-12CAH/12CAHLF |
| 92192-12CB/12CBLF |
| 92192-12FA/12FALF |
| 92192-13CA/13CALF |
| 92192-13CAH/12CAHLF |
| 92192-14CA/14CALF |
| 92192-15CA/15CALF |
| 92192-12GALF |



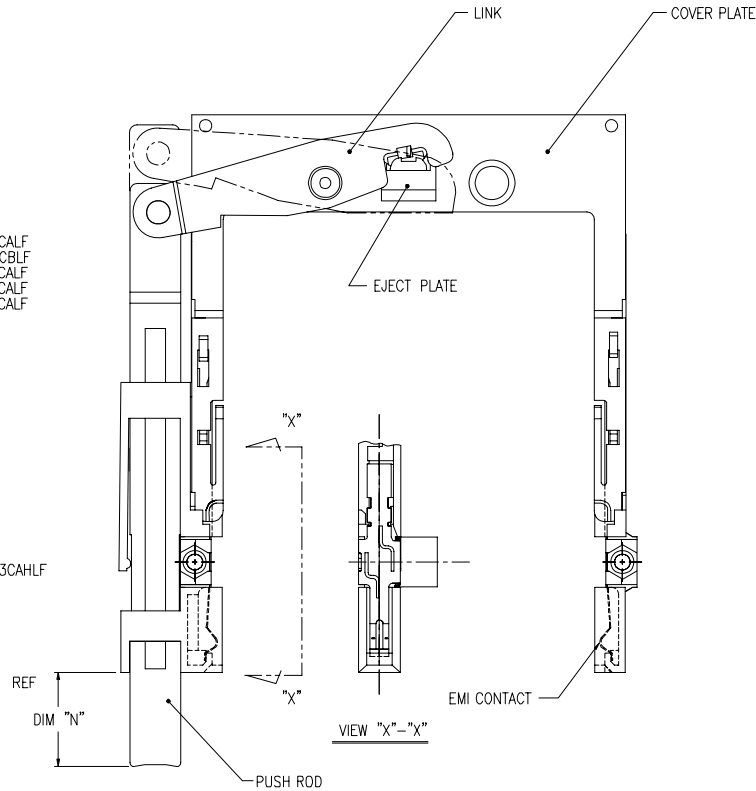
92192-12CA/12CALF
-12CB/12CBLF
-13CA/13CALF
-14CA/14CALF
-15CA/15CALF

SECTION "Y"- "Y"(4/1)
NON HOLD-DOWN
TYP(2)



92192-13CAH/13CAHLF

SECTION "Y"- "Y"(4/1)
OPTIONAL HOLD-DOWN
TYP(2)



NOTE

1. EJECT PLATE MOVE ALONG INSIDE WALL OF COVER PLATE
SMOOTHLY AFTER ASSEMBLING WITH HDR ASSY.

② MATERIAL

GUIDE : POLYPHTHARAMID UL94V-0 BLACK
PUSH ROD : FLAME RETARDANT UL94V-0 BLACK
PLATE : STAINLESS
EMI CONTACT : PHOSPHOR BRONZE
STAND OFF : ZINC ALLOYS DIE CASTING

③ FINISH

EMI CONTACT
UNDER PLATING : 2.0 μ m MIN. Ni
CONTACT AREA : 0.5 μ m MIN. Au
STAND OFF : 3~5 μ m Ni OVER 5~10 μ m Cu.

| | | | | | | | | | | | | | | | | | | | |
|-------------|--|----------------|--|---------|------|---------------------------------------|--|------------|--|--------------------------|--|--|--|--------------|--|------------|--|--|--|
| mat'l. code | | | | surface | | tolerance | | projection | | product family PCMCIA | | | | | | | | | |
| ltr | | ecn no | | dr | date | tolerances unless otherwise specified | | | | | | title 68P EJECTOR HEADER TYPE I/II/III MECHANISM ASS'Y | | | | | | | |
| P | | | | | | angles | | linear | | ±0.30 | | | | | | | | | |
| | | | | | | | | | | MM | | scale | | | | | | | |
| | | | | | | ±2° | | | | | | | | | | | | | |
| | | | | | | dr | | M.KAJIURA | | 7/22/99 | | FCI | | | | | | | |
| | | | | | | enr | | M.KAJIURA | | 7/22/99 | | | | | | | | | |
| | | | | | | chr | | M.KAJIURA | | 7/22/99 | | | | | | | | | |
| | | | | | | appd | | M.KAJIURA | | 7/22/99 | | | | | | | | | |
| sheet index | | revision sheet | | | | | | | | | | dwg no | | sheet 5 of 5 | | size A4 | | | |
| | | | | | | | | | | | | type | | CUSTOMER | | Drawing | | | |

Mouser Electronics

Authorized Distributor

Click to View Pricing, Inventory, Delivery & Lifecycle Information:

[FCI / Amphenol:](#)

[92192-00CALF](#) [92192-00CA](#) [92192-02CA](#) [92192-04CA](#) [92192-05CA](#) [92192-14CA](#) [92192-15CA](#) [92192-02CALF](#)
[92192-00CAH](#) [92192-00FA](#) [92192-12CA](#) [92192-10CA](#) [92192-10FA](#)