

PRODUCT NUMBER
73324-YXXLF

PLATING, SEE TABLE

LEAD FREE OPTION
SEE NOTE 6

TOTAL NB OF POS

TOP VIEW

NOTE 5

NOTE 5

NOTES:

- 1 - MATERIAL HOUSING: THERMOPLASTIC POLYESTER 30% GLASS FILLED COLOUR BLUE, FLAME RETARDANT PER UL-94 CATEGORY VO.
- 2 - MATERIAL PIN: COPPER ALLOY.
- 3 - MIN PUSH OUT FORCE TERMINAL : 15N
- 4 - MAX PROTUSION 0.3 MAX IN 4 PLACES. IN BOTH DIRECTIONS.
- 5 - TO DETERMINE DIMENSIONS :
N = NUMBER OF POSITIONS PER ROW
EXAMPLE : 8 POS PER ROW, $N \times 2.54 = 20.32\text{mm}$
- 6 - "LF" MEANS THAT THE PRODUCT IS RoHS COMPLIANT THEN MEETS EUROPEAN UNION DIRECTIVES AND OTHER COUNTRY REGULATION AS DESCRIBED IN GS-47-0004

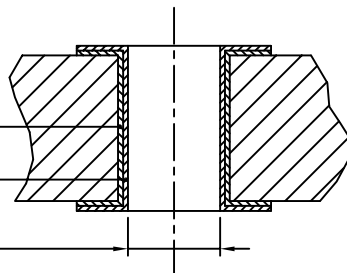
THERE IS NO NECESSARY A GROOVE
IN EVERY POSITION ON THIS SIDE.

DRILLED HOLE $\phi 1.15 \pm 0.025$ DIA.

COPPER PLATING 0.025 MIN. 0.075 MAX.

TIN/LEAD PLATING 0.005 MIN. 0.015 MAX.

FINISHED HOLE $\phi 0.94$ MIN. $\phi 1.09$ MAX.



$(N \times 2.54) - 0.18 \pm 0.15$

NOTE 5

$(N-1) \times 2.54$

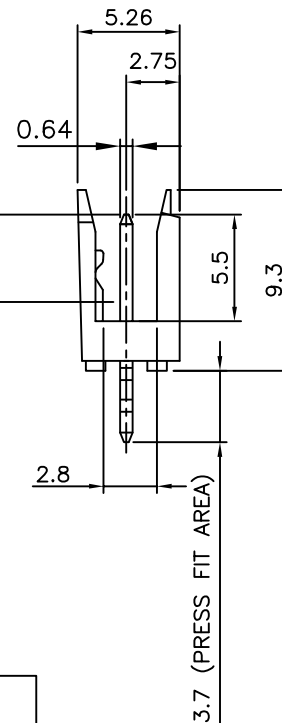
NOTE 5

2.54


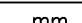
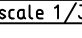
$\phi 0.15$

RECOMMENDED HOLE PATTERN

(CONTACT AREA)



73324-3XXLF	0.76µm Au/GXT	1.0µm MATTE TIN
PLATING CODE	CONTACT AREA	PRESSFIT TAIL AREA
	PLATING THICKNESS OVER 1.27µm Ni MIN	

mat'l. code SEE NOTES				surface ISO 1302 ✓		tolerance ISO 406 ISO 1101		projection 		product family DUBOX HDR			
ltr	ecn no	dr	date	tolerances unless otherwise specified						title			
H	B-19286	AMA	14.11.03	angles	linear				PRESS FIT SINGLE ROW				
J	F-21810	AMA	15.06.19										
								scale 1/3	dwg no 73324 type CUSTOMER Drawing				
D	F20102	DLE	02.01.09	dr	P NIZZI	97.06.19							
E	F06-0228	LMU	06.07.11	engr	JM PHAMVAN	97.06.19							
F	F06-0298	LMU	06.10.18	chr	P NIZZI	97.06.19							
G	F08-0147	YOV	08.04.14	appd	JMP	97.06.19							
sheet index		revision sheet											

Mouser Electronics

Authorized Distributor

Click to View Pricing, Inventory, Delivery & Lifecycle Information:

[FCI / Amphenol:](#)

[73324-304](#) [73324-304LF](#) [73324-310LF](#) [73324-303LF](#)