

Actuator

704.099.018

Distribution by
DigiKey

DigiKey



<https://digikey.eao.com/p/704.099.018>

Your product:



704.099.018 Actuator

FRONT

Front bezel material:	Aluminium
Front dimension:	Ø 35 mm
Front bezel colour:	Nature

MOUNTING

Design:	flush
Mounting cut-out:	Ø 30.5 mm

OPERATING-/INDICATION PART

Lever colour:	Black
Lever material:	plastic
Lever shape:	long

ELECTRICAL CHARACTERISTICS

Standards:	The switches comply with the "Standards for low-voltage switching devices" DIN EN 60947-1
------------	---

MECHANICAL CHARACTERISTIC

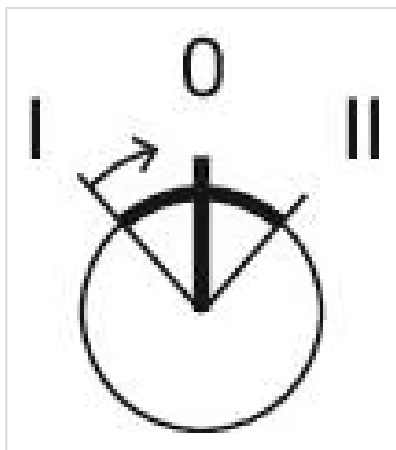
Weight:	0.056 kg
Switching action:	Momentary - Rest - Maintained
Switching angle:	42° left / 42° right
Mechanical lifetime:	≤2.5 Mio. cycles of operation
Switching positions:	3 positions

AMBIENT CONDITION

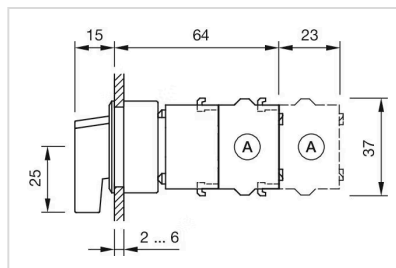
Operating temperature:	– 40 °C ... + 55 °C
IP Protection:	IP65 front side
Storage temperature:	– 40 °C ... + 85 °C

OTHER

max. number of switching elements:	3
Short Description:	Actuator, Ø 30.5 mm, Ø 35 mm, non illuminative, Black, long, Nature, Aluminium, anodised, Momentary - Rest - Maintained
Hints:	Max. 3 switching elements can be clipped on
Switching positions:	



Dimension drawings:

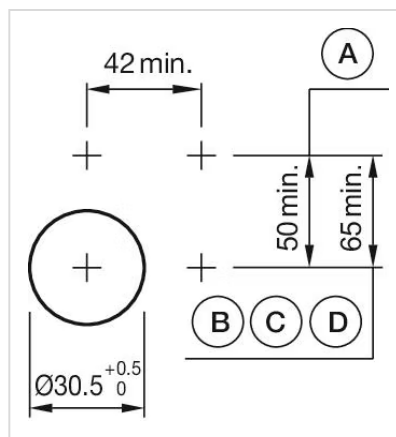


A = Screw terminal

Wiring diagrams:



Mounting cut-outs:



- A = Screw terminal
- B = Push-in terminal (PIT)
- C = Plug-in terminal 6.3 mm x 0.8 mm
- D = Double plug-in terminal 6.3 mm x 0.8 mm