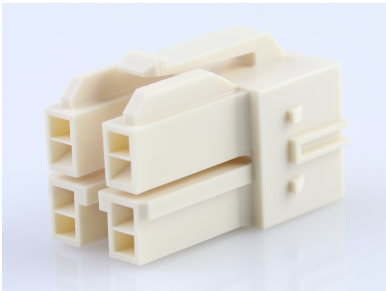




Part Number : [1512072411](#)
Product Description : CP-6.5 Receptacle Housing, Glow-Wire Capable, 6.50mm Pitch, Dual Row, 4 Circuits, Natural
Series Number : [151207](#)
Status : Active
Product Category : [Connector Housings](#)



Documents & Resources

Drawings

[Drawing 1512072411_sd.pdf](#)
[Packaging Design Drawing 1512070001-PK-000.pdf](#)

3D Models and Design Files

[3D Model 1512072411_stp.zip](#)

Specifications

[Product Specification PS-151048-0001-001.pdf](#)
[Product Specification 2034380001-PS-000.pdf](#)
[Product Specification 2035550001-PS-000.pdf](#)
[Test Summary 1512070001-TS-000.pdf](#)
[Test Summary 2034380001-TS-000.pdf](#)
[Test Summary 2035550001-TS-000.pdf](#)

Product Environment Compliance

Compliance

GADSL/IMDS	Not Relevant
China RoHS	
EU ELV	Not Relevant
Low-Halogen Status	Not Low-Halogen per IEC 61249-2-21
REACH SVHC	Not Contained per D(2024)4144-DC (27 June 2024)
EU RoHS	Compliant per EU 2015/863

Multiple Part Product Compliance Statements

- Eu RoHS
- REACH SVHC

- Low-Halogen

Multiple Part Industry Compliance Documents

- IPC 1752A Class C
- IPC 1752A Class D
- Molex Product Compliance Declaration
- IEC-62474
- chemSHERPA (xml)

EU RoHS Certificate of Compliance

Part Details

General

Status	Active
Category	Connector Housings
Series	151207
Description	CP-6.5 Receptacle Housing, Glow-Wire Capable, 6.50mm Pitch, Dual Row, 4 Circuits, Natural
Application	Power, Wire-to-Board, Wire-to-Wire
Comments	See Product Specification for maximum current rating by circuit size and wire AWG
Product Family	CP Wire-to-Board and Wire-to-Wire Connector Systems
Product Name	CP-6.5
UPC	191128439800

Agency

CSA	LR19980
UL	E29179

Physical

Circuits (maximum)	4
Color - Resin	Natural (White)
Flammability	94V-0
Gender	Receptacle
Glow-Wire Capable	Yes
Keying to Mating Part	Yes

Lock to Mating Part	Yes
Material - Resin	Nylon
Net Weight	1.855/g
Number of Rows	2
Packaging Type	Bag
Panel Mount	No
Pitch - Mating Interface	6.50mm
Pitch - Termination Interface	6.50mm
Polarized to Mating Part	Yes
Temperature Range - Operating	-40° to +105°C

Solder Process Data

Lead-Free Process Capability	N/A
------------------------------	-----

Mates With / Use With

Mates with Part(s)

Description	Part Number
CP-6.5 Header, 6.50mm Pitch, Dual Row, Vertical, Polarized, Positive Lock, Tray Packaging, Glow-Wire Capable, 4 Circuits, Natural (White)	<u>1510481411</u>
CP-6.5 Plug Housing, 6.50mm Pitch, Dual Row, 4 Circuits, Natural, Glow-Wire Capable	<u>2034382411</u>
CP-6.5 Header, 6.50mm Pitch, Dual Row, Right-Angle, Polarized, Through Hole, Tube Packaging, 4 Circuits, Natural	<u>2035551214</u>
CP-6.5 Header, 6.50mm Pitch, Dual Row, Right-Angle, Polarized, Through Hole, Tape and Reel Packaging, 4 Circuits, Natural	<u>2035551224</u>
CP-6.5 Header, 6.50mm Pitch, Dual Row, Right-Angle, Polarized, Surface Mount, Tray Packaging, 4 Circuits, Natural	<u>2035552214</u>
CP-6.5 Header, 6.50mm Pitch, Dual Row, Right-Angle, Polarized, Surface Mount, Tape and Reel Packaging, 4 Circuits, Natural	<u>2035552224</u>

Use with Part(s)

Description	Part Number
CP-6.5 Terminal Position Assurance (TPA) Retainer, 2 Circuits	<u>511430205</u>
CP-6.5 Female Crimp Terminals	<u>50597</u>
CP-6.5 Female Crimp Terminals	<u>50598</u>