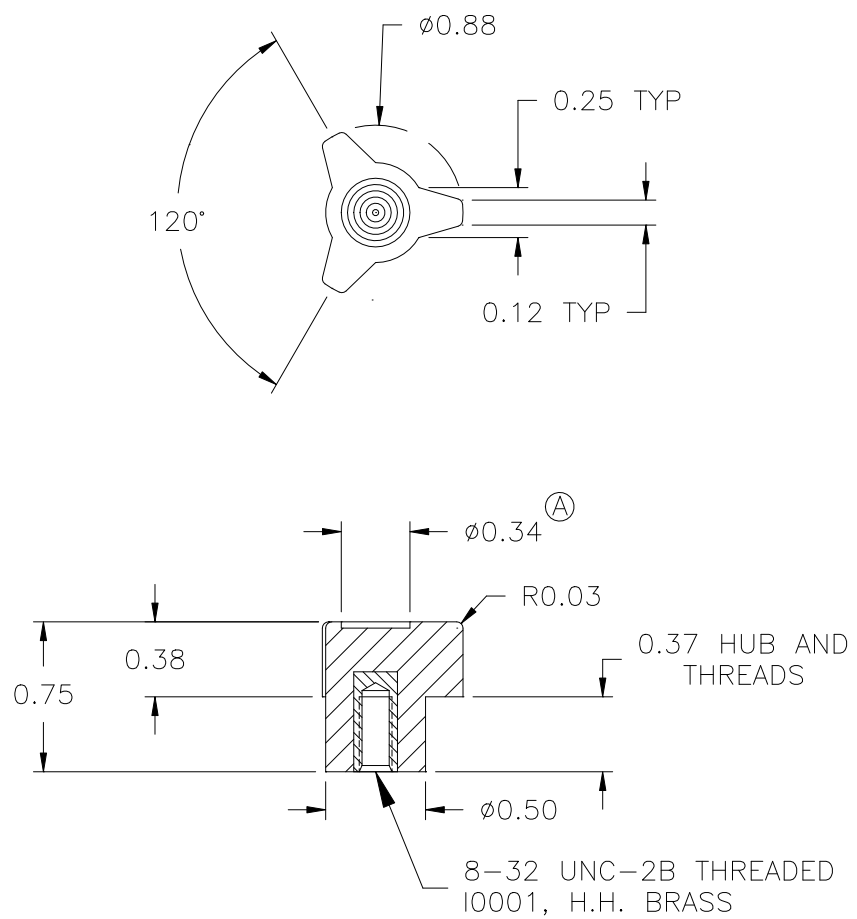


P/N 3022	
M <sup>NO.</sup>	1475
CAVITY	3022
PLUNGER	3022
PLUNGER PIN	3022
PINS	3025&3025-A
SHIMS	.250+.250+.047
PIN BAR	1475
INSERT	I0001
PLUNGER KEY	1/4x1/4x7/16
CAVITY KEY	1/4x1/4x1/2



MATERIAL: G.P. PHENOLIC (B11)  
COLOR: BLACK

TOLERANCES: UNLESS OTHERWISE SPECIFIED	DO NOT SCALE DRAWING				
		-	REDRAWN	TL	11/16/99
DECIMALS: X.XXX $\pm$ .005 X.XX $\pm$ .015	MM: X.XX $\pm$ 0.15MM X.X $\pm$ 0.4MM	A	WAS $\phi 1/4$ RECESS	HD	5/20/98
		-	CAD REDRAW	HD	3/26/93
FRACTIONS $\pm$ 1/64	ANG. $\pm$ 1°	CHANGES			