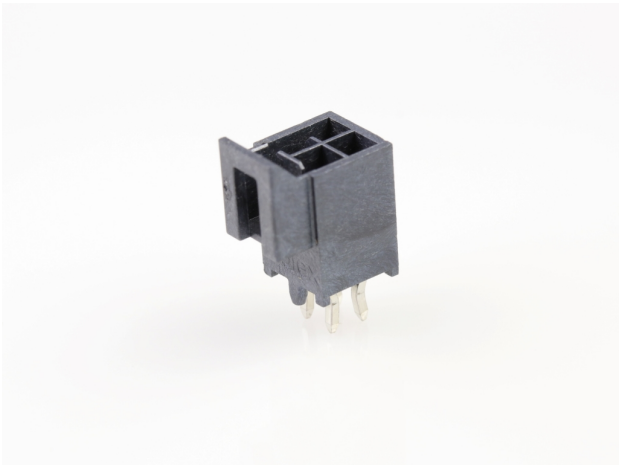




**Part Number :** [1053103604](#)  
**Product Description :** Nano-Fit Vertical Header, Through Hole, 2.50mm Pitch, Dual Row, 4 Circuits, with Kinked Pins, 0.76µm Gold (Au) Plating, Black, Glow-Wire Capable, Tape and Reel  
**Series Number :** 105310  
**Status :** Active  
**Product Category :** PCB Headers and Receptacles  
**Packaging Alternative :** [1053101304](#) (Tray)



Documents & Resources

Drawings

[Drawing 1053103604\\_sd.pdf](#)  
[Packaging Design Drawing 1053101000-PK-000.pdf](#)

3D Models and Design Files

[3D Model 1053103604\\_stp.zip](#)

Specifications

[Product Specification 1053001000-PS-CH-000.pdf](#)  
[Product Specification 1053001000-PS-ES-000.pdf](#)  
[Product Specification 1053001000-PS-JP-000.pdf](#)  
[Product Specification 1053001000-PS-SK-000.pdf](#)  
[Product Specification PS-105300-100-001.pdf](#)

Product Environment Compliance

Compliance

GADSL/IMDS	Compliant with Exemption 44; 34; 33
China RoHS	
EU ELV	Not Relevant
Low-Halogen Status	Low-Halogen per IEC 61249-2-21
REACH SVHC	Not Contained per D(2024)4144-DC (27 June 2024)
EU RoHS	Compliant per EU 2015/863

## Multiple Part Product Compliance Statements

- Eu RoHS
- REACH SVHC
- Low-Halogen

## Multiple Part Industry Compliance Documents

- IPC 1752A Class C
- IPC 1752A Class D
- Molex Product Compliance Declaration
- IEC-62474
- chemSHERPA (xml)

## EU RoHS Certificate of Compliance

---

### Part Details

#### General

Status	Active
Category	PCB Headers and Receptacles
Series	105310
Description	Nano-Fit Vertical Header, Through Hole, 2.50mm Pitch, Dual Row, 4 Circuits, with Kinked Pins, 0.76µm Gold (Au) Plating, Black, Glow-Wire Capable, Tape and Reel
Application	Power, Wire-to-Board
Component Type	PCB Header
Product Family	Nano-Fit Power Connectors
Product Name	Nano-Fit
UPC	193264552184

#### Agency

UL	E29179
----	--------

#### Electrical

Current - Maximum per Contact	7.5A
Voltage - Maximum	250V AC (RMS)/DC

#### Physical

Breakaway	No
-----------	----

Circuits (Loaded)	4
Circuits (maximum)	4
Color - Resin	Black
Durability (mating cycles max)	50
Glow-Wire Capable	Yes
Guide to Mating Part	No
Keying to Mating Part	Yes
Lock to Mating Part	Yes
Material - Metal	Brass
Material - Plating Mating	Gold
Material - Plating Termination	Tin
Material - Resin	Liquid Crystal Polymer
Net Weight	0.427/g
Number of Rows	2
Orientation	Vertical
Packaging Type	Embossed Tape on Reel
PC Tail Length	3.20mm
PCB Locator	Yes
PCB Retention	Yes
PCB Thickness - Recommended	1.60mm, 2.40mm
Pitch - Mating Interface	2.50mm
Pitch - Termination Interface	2.50mm
Plating min - Mating	0.762µm
Plating min - Termination	1.524µm
Polarized to Mating Part	Yes
Polarized to PCB	Yes
Shrouded	Yes
Stackable	No
Temperature Range - Operating	-40° to +115°C
Termination Interface Style	Through Hole

---

## Mates With / Use With

### Mates with Part(s)

Description	Part Number
-------------	-------------

Nano-Fit Receptacle Housing, TPA Capable, 2.50mm Pitch, Dual Row, 4 Circuits, Black, Glow-Wire Capable	<u>1053081204</u>
---	-------------------