

# NBC-PP-J1PGY-S/R4IDC8 - DIN rail adapter



1100077  
<https://www.phoenixcontact.com/us/products/1100077>

Please be informed that the data shown in this PDF document is generated from our online catalog. Please find the complete data in the user documentation. Our general terms of use for downloads are valid.



DIN rail adapter, degree of protection: IP20, number of positions: 8, 10 Gbps, CAT6<sub>A</sub>, material: PC-GF10, connection method: IDC connection, connection cross section: AWG 26- 22, Item set, DIN rail adapter including RJ45 cable connection module

## Product description

Compact DIN rail adapter, including RJ45 cable connection module, with optional shield connection, with dust protection cover, one-piece design

## Your advantages

- Compact design
- For distributing copper and fiber optic cabling
- Front release without special tool
- One-Piece Design
- Assembly without special tools
- Optional overall shielding braid for copper modules
- Security elements available as accessories
- Adapter-less integration of module inserts
- Marking service: Phoenix Contact can custom-mark all labels according to your requirements

## Commercial data

Item number	1100077
Packing unit	1 pc
Minimum order quantity	1 pc
Sales key	AB18
Product key	ABNLAA
GTIN	4055626951447
Weight per piece (including packing)	48.8 g
Weight per piece (excluding packing)	49 g
Customs tariff number	85366990
Country of origin	DE

# NBC-PP-J1PGY-S/R4IDC8 - DIN rail adapter



1100077

<https://www.phoenixcontact.com/us/products/1100077>

## Set consists of

### NBC-PP-G1PGY - DIN rail adapter

1041740

<https://www.phoenixcontact.com/us/products/1041740>



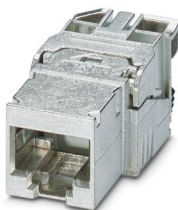
DIN rail adapter, design: Headers with shielding, degree of protection: IP20, material: PC-GF10, connection method: Quick connection, without assembled modules

---

### CUC-I-J1ZNI-S/R4IDC8 - RJ45 jack insert

1417274

<https://www.phoenixcontact.com/us/products/1417274>



RJ45 jack insert, design: RJ45, degree of protection: IP20, number of positions: 8, 10 Gbps, CAT6<sub>A</sub>, material: Metal, connection method: IDC connection, connection cross section: AWG 26- 22, cable outlet: straight, Adapter-free design, Ethernet

# NBC-PP-J1PGY-S/R4IDC8 - DIN rail adapter



1100077

<https://www.phoenixcontact.com/us/products/1100077>

## Technical data

### Notes

Notes on operation	Set item with RJ45 cable connection module
--------------------	--

### Product properties

Product type	Patch panel
Type	RJ45
Number of positions	8
Number of slots	1

### Data management status

Article revision	01
------------------	----

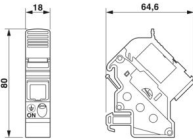
### Electrical properties

Rated voltage (III/3)	72 V (DC)
Frequency range	500 MHz
Contact resistance	≤ 5 mΩ (Shield-ground, optional)
Transmission medium	Copper

### Connection data

Connection method	IDC connection
-------------------	----------------

### Dimensions

Dimensional drawing	
Width	18 mm
Height	80 mm
Depth	64.6 mm

### Material specifications

Flammability rating according to UL 94	V0
Housing material	PC-GF10
Material, protective cover	PC

### Cable/line

External cable diameter	4.5 mm ... 9 mm
-------------------------	-----------------

### Environmental and real-life conditions

#### Ambient conditions

Degree of protection	IP20
----------------------	------

# NBC-PP-J1PGY-S/R4IDC8 - DIN rail adapter



1100077

<https://www.phoenixcontact.com/us/products/1100077>

Ambient temperature (operation)	-10 °C ... 60 °C
Ambient temperature (storage/transport)	-40 °C ... 60 °C

## Mounting

Mounting type	DIN rail mounting
Thread type	()

# NBC-PP-J1PGY-S/R4IDC8 - DIN rail adapter

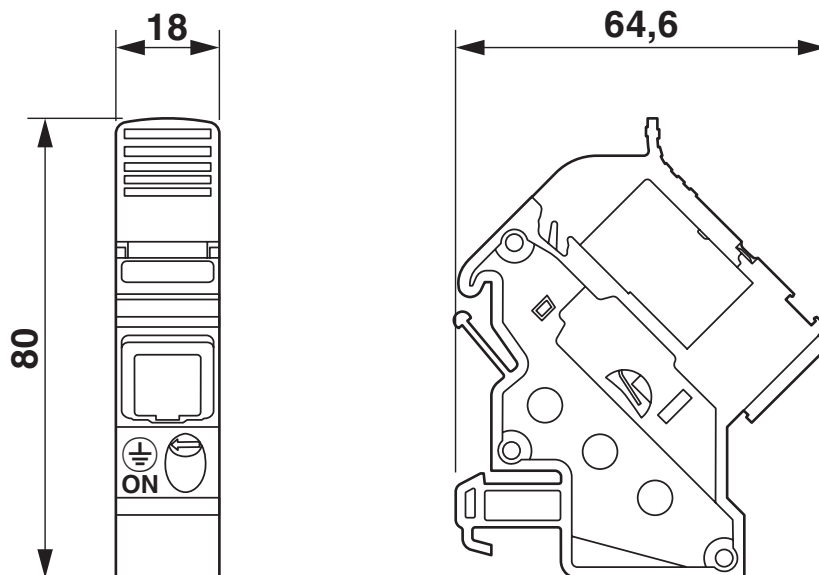


1100077

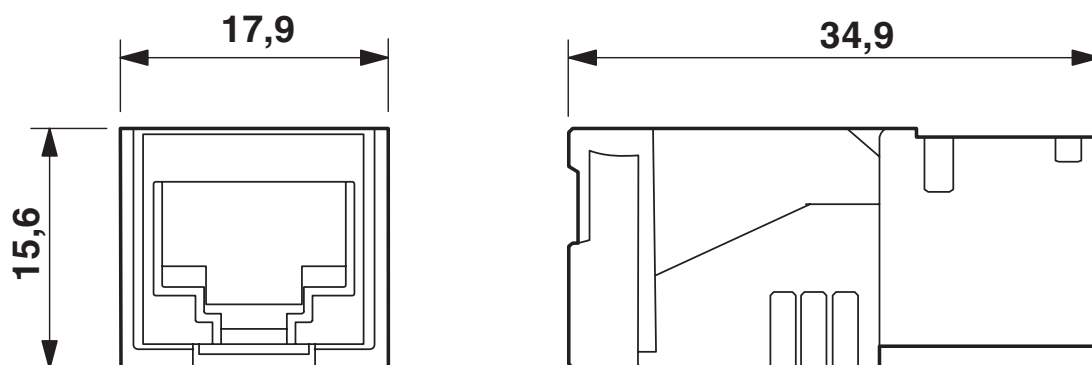
<https://www.phoenixcontact.com/us/products/1100077>

## Drawings

Dimensional drawing



Dimensional drawing



RJ45 jack insert

# NBC-PP-J1PGY-S/R4IDC8 - DIN rail adapter



1100077

<https://www.phoenixcontact.com/us/products/1100077>

## Approvals

🔗 To download certificates, visit the product detail page: <https://www.phoenixcontact.com/us/products/1100077>



**EAC**

Approval ID: 19060508

# NBC-PP-J1PGY-S/R4IDC8 - DIN rail adapter



1100077

<https://www.phoenixcontact.com/us/products/1100077>

## Classifications

### ECLASS

ECLASS-11.0	19170112
ECLASS-12.0	19170112
ECLASS-13.0	19170112

### ETIM

ETIM 9.0	EC001128
----------	----------

### UNSPSC

UNSPSC 21.0	39121400
-------------	----------

# NBC-PP-J1PGY-S/R4IDC8 - DIN rail adapter



1100077

<https://www.phoenixcontact.com/us/products/1100077>

## Environmental product compliance

### EU RoHS

Fulfills EU RoHS substance requirements	Yes, No exemptions
---	--------------------

### China RoHS

Environment friendly use period (EFUP)	EFUP-E
	No hazardous substances above the limits

### EU REACH SVHC

REACH candidate substance (CAS No.)	No substance above 0.1 wt%
-------------------------------------	----------------------------



# NBC-PP-J1PGY-S/R4IDC8 - DIN rail adapter



1100077

<https://www.phoenixcontact.com/us/products/1100077>

## Accessories

### NBC-PP-P1PGY:10 - Dust protection cover

1041860

<https://www.phoenixcontact.com/us/products/1041860>

Dust protection cover



---

### NBC-PP-F1PWH:10 - Plug Guard Security Frame

1041881

<https://www.phoenixcontact.com/us/products/1041881>

Plug Guard Security Frame



## NBC-PP-J1PGY-S/R4IDC8 - DIN rail adapter

1100077

<https://www.phoenixcontact.com/us/products/1100077>



## NBC-PP-A1PRD:10 - Port Guard Security Element

1041900

<https://www.phoenixcontact.com/us/products/1041900>



Port Guard Security Element

---

## UC-TMF 16 - Marker for terminal blocks

0819262

<https://www.phoenixcontact.com/us/products/0819262>



Marker for terminal blocks, Sheet, white, unlabeled, can be labeled with: BLUEMARK ID COLOR, BLUEMARK ID, BLUEMARK CLED, PLOTMARK, CMS-P1-PLOTTER, mounting type: latching, for terminal block width: 16 mm, lettering field size: 15.45 x 5.1 mm, Number of individual labels: 32

## NBC-PP-J1PGY-S/R4IDC8 - DIN rail adapter

1100077

<https://www.phoenixcontact.com/us/products/1100077>



## UC-TMF 16 CUS - Marker for terminal blocks

0824678

<https://www.phoenixcontact.com/us/products/0824678>



Marker for terminal blocks, can be ordered: by sheet, white, labeled according to customer specifications, mounting type: snap into flat marker groove, for terminal block width: 16 mm, lettering field size: 15.45 x 5.1 mm, Number of individual labels: 32

---

## FL DIN RA - DIN rail adapter

2891053

<https://www.phoenixcontact.com/us/products/2891053>



The FL DIN RA is installed in a standard, 19-inch rack (EIA-310-D, IEC 60297-3-100) to allow DIN rail mounted equipment to be rack mounted.

# NBC-PP-J1PGY-S/R4IDC8 - DIN rail adapter



1100077

<https://www.phoenixcontact.com/us/products/1100077>

## UC-TMF 16 VT - Marker for terminal blocks

0822699

<https://www.phoenixcontact.com/us/products/0822699>



Marker for terminal blocks, Sheet, violet, unlabeled, can be labeled with: BLUEMARK ID COLOR, BLUEMARK ID, BLUEMARK CLED, PLOTMARK, CMS-P1-PLOTTER, mounting type: snap in, for terminal block width: 16 mm, lettering field size: 15.45 x 5.1 mm, Number of individual labels: 32

---

## UC-TMF 16 YE - Marker for terminal blocks

0819259

<https://www.phoenixcontact.com/us/products/0819259>



Marker for terminal blocks, Sheet, yellow, unlabeled, can be labeled with: BLUEMARK ID COLOR, BLUEMARK ID, BLUEMARK CLED, PLOTMARK, CMS-P1-PLOTTER, mounting type: latching, for terminal block width: 16 mm, lettering field size: 15.45 x 5.1 mm, Number of individual labels: 32

# NBC-PP-J1PGY-S/R4IDC8 - DIN rail adapter



1100077

<https://www.phoenixcontact.com/us/products/1100077>

## UC-TMF 16 RD CUS - Marker for terminal blocks

0824682

<https://www.phoenixcontact.com/us/products/0824682>



Marker for terminal blocks, can be ordered: by sheet, red, labeled according to customer specifications, mounting type: snap into flat marker groove, for terminal block width: 16 mm, lettering field size: 15.45 x 5.1 mm, Number of individual labels: 32

---

## UC-TMF 16 GN - Marker for terminal blocks

0817921

<https://www.phoenixcontact.com/us/products/0817921>



Marker for terminal blocks, Sheet, green, unlabeled, can be labeled with: BLUEMARK ID COLOR, BLUEMARK ID, BLUEMARK CLED, PLOTMARK, CMS-P1-PLOTTER, mounting type: latching, for terminal block width: 16 mm, lettering field size: 15.45 x 5.1 mm, Number of individual labels: 32

# NBC-PP-J1PGY-S/R4IDC8 - DIN rail adapter

1100077

<https://www.phoenixcontact.com/us/products/1100077>



## UC-TMF 16 BU CUS - Marker for terminal blocks

0824679

<https://www.phoenixcontact.com/us/products/0824679>



Marker for terminal blocks, can be ordered: by sheet, blue, labeled according to customer specifications, mounting type: snap into flat marker groove, for terminal block width: 16 mm, lettering field size: 15.45 x 5.1 mm, Number of individual labels: 32

---

## UC-TMF 16 OG - Marker for terminal blocks

0817811

<https://www.phoenixcontact.com/us/products/0817811>



Marker for terminal blocks, Sheet, orange, unlabeled, can be labeled with: BLUEMARK ID COLOR, BLUEMARK ID, BLUEMARK CLED, PLOTMARK, CMS-P1-PLOTTER, mounting type: latching, for terminal block width: 16 mm, lettering field size: 15.45 x 5.1 mm, Number of individual labels: 32

# NBC-PP-J1PGY-S/R4IDC8 - DIN rail adapter



1100077

<https://www.phoenixcontact.com/us/products/1100077>

## UC-TMF 16 OG CUS - Marker for terminal blocks

0824681

<https://www.phoenixcontact.com/us/products/0824681>



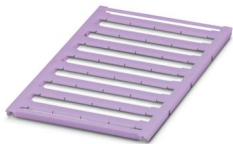
Marker for terminal blocks, can be ordered: by sheet, orange, labeled according to customer specifications, mounting type: snap into flat marker groove, for terminal block width: 16 mm, lettering field size: 15.45 x 5.1 mm, Number of individual labels: 32

---

## UC-TMF 16 VT CUS - Marker for terminal blocks

0824683

<https://www.phoenixcontact.com/us/products/0824683>



Marker for terminal blocks, can be ordered: by sheet, violet, labeled according to customer specifications, mounting type: snap into flat marker groove, for terminal block width: 16 mm, lettering field size: 15.45 x 5.1 mm, Number of individual labels: 32

# NBC-PP-J1PGY-S/R4IDC8 - DIN rail adapter

1100077

<https://www.phoenixcontact.com/us/products/1100077>



## UC-TMF 16 BU - Marker for terminal blocks

0817905

<https://www.phoenixcontact.com/us/products/0817905>



Marker for terminal blocks, Sheet, blue, unlabeled, can be labeled with: BLUEMARK ID COLOR, BLUEMARK ID, BLUEMARK CLED, PLOTMARK, CMS-P1-PLOTTER, mounting type: latching, for terminal block width: 16 mm, lettering field size: 15.45 x 5.1 mm, Number of individual labels: 32

---

## UC-TMF 16 YE CUS - Marker for terminal blocks

0824684

<https://www.phoenixcontact.com/us/products/0824684>



Marker for terminal blocks, can be ordered: by sheet, yellow, labeled according to customer specifications, mounting type: snap into flat marker groove, for terminal block width: 16 mm, lettering field size: 15.45 x 5.1 mm, Number of individual labels: 32



# NBC-PP-J1PGY-S/R4IDC8 - DIN rail adapter



1100077

<https://www.phoenixcontact.com/us/products/1100077>

## UC-TMF 16 GN CUS - Marker for terminal blocks

0824680

<https://www.phoenixcontact.com/us/products/0824680>



Marker for terminal blocks, can be ordered: by sheet, green, labeled according to customer specifications, mounting type: snap into flat marker groove, for terminal block width: 16 mm, lettering field size: 15.45 x 5.1 mm, Number of individual labels: 32

---

## UC-TMF 16 RD - Marker for terminal blocks

0817824

<https://www.phoenixcontact.com/us/products/0817824>



Marker for terminal blocks, Sheet, red, unlabeled, can be labeled with: BLUEMARK ID COLOR, BLUEMARK ID, BLUEMARK CLED, PLOTMARK, CMS-P1-PLOTTER, mounting type: latching, for terminal block width: 16 mm, lettering field size: 15.45 x 5.1 mm, Number of individual labels: 32

# NBC-PP-J1PGY-S/R4IDC8 - DIN rail adapter



1100077

<https://www.phoenixcontact.com/us/products/1100077>

## VS-OE-OE-93B-100,0 - Data cable

1416389

<https://www.phoenixcontact.com/us/products/1416389>



Data cable, PROFINET CAT5 (100 Mbps), 4-position, PVC/PVC, green RAL 6018, shielded, free cable end, on free cable end, cable length: 100 m

---

## VS-OE-OE-94B-100,0 - Data cable

1416567

<https://www.phoenixcontact.com/us/products/1416567>



Data cable, Ethernet CAT5 (1 Gbps), 8-position, PUR halogen-free, water blue RAL 5021, shielded, free cable end, on free cable end, cable length: 100 m

## NBC-PP-J1PGY-S/R4IDC8 - DIN rail adapter

1100077

<https://www.phoenixcontact.com/us/products/1100077>



## VS-OE-OE-94F/... - Data cable

1417359

<https://www.phoenixcontact.com/us/products/1417359>



Data cable, Ethernet CAT6<sub>A</sub> (10 Gbps), 8-position, PUR halogen-free, water blue RAL 5021, shielded, free cable end, on free cable end, cable length: Free entry (0.5 ... 400 m)

---

## MICROFOX-SP-1 - Diagonal cutter

1212487

<https://www.phoenixcontact.com/us/products/1212487>



Electronic diagonal cutter, tapered head, without chamfer, with opening spring, non-reflective phosphate-treated surface, punched version

# NBC-PP-J1PGY-S/R4IDC8 - DIN rail adapter

1100077

<https://www.phoenixcontact.com/us/products/1100077>



## VS-CABLE-STRIP-VARIO - Stripping tool

1657407

<https://www.phoenixcontact.com/us/products/1657407>

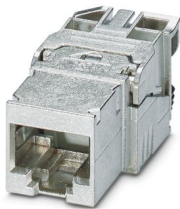
Stripping tool, for the multi-level stripping of shielded cables



## CUC-I-J1ZNI-S/R4IDC8 - RJ45 jack insert

1417274

<https://www.phoenixcontact.com/us/products/1417274>



RJ45 jack insert, design: RJ45, degree of protection: IP20, number of positions: 8, 10 Gbps, CAT6<sub>A</sub>, material: Metal, connection method: IDC connection, connection cross section: AWG 26- 22, cable outlet: straight, Adapter-free design, Ethernet

Phoenix Contact 2024 © - all rights reserved  
<https://www.phoenixcontact.com>

Phoenix Contact USA  
586 Fulling Mill Road  
Middletown, PA 17057, United States  
(+717) 944-1300  
[info@phoenixcon.com](mailto:info@phoenixcon.com)