
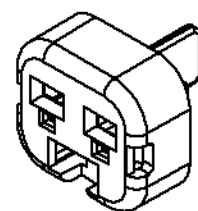
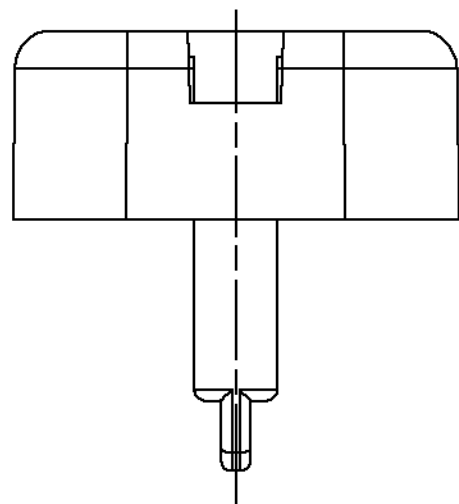
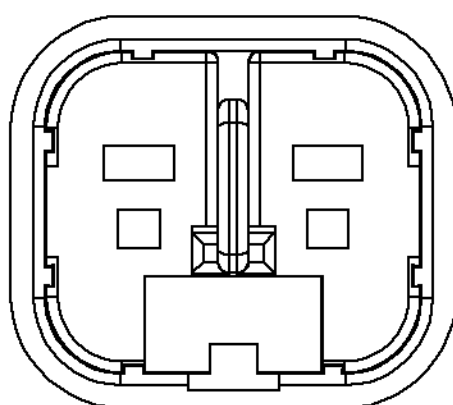
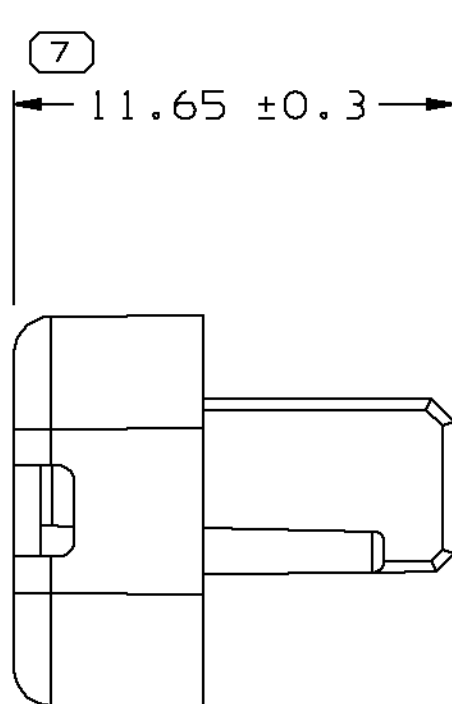
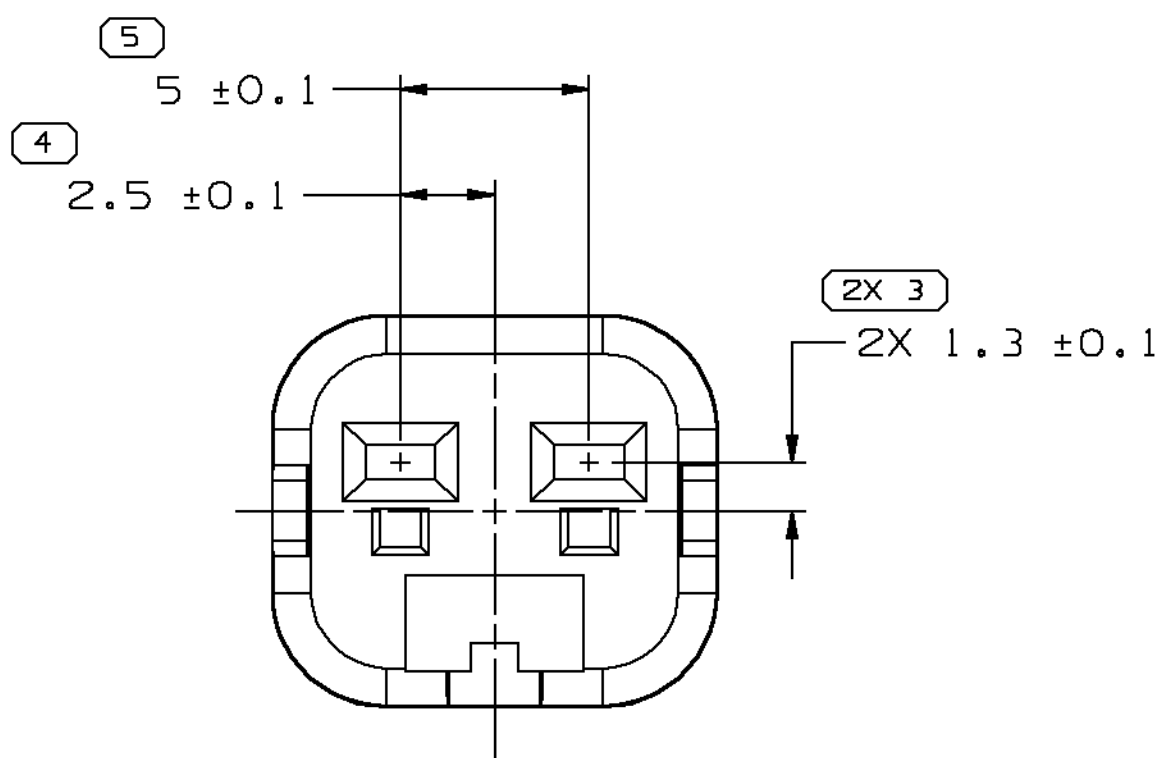
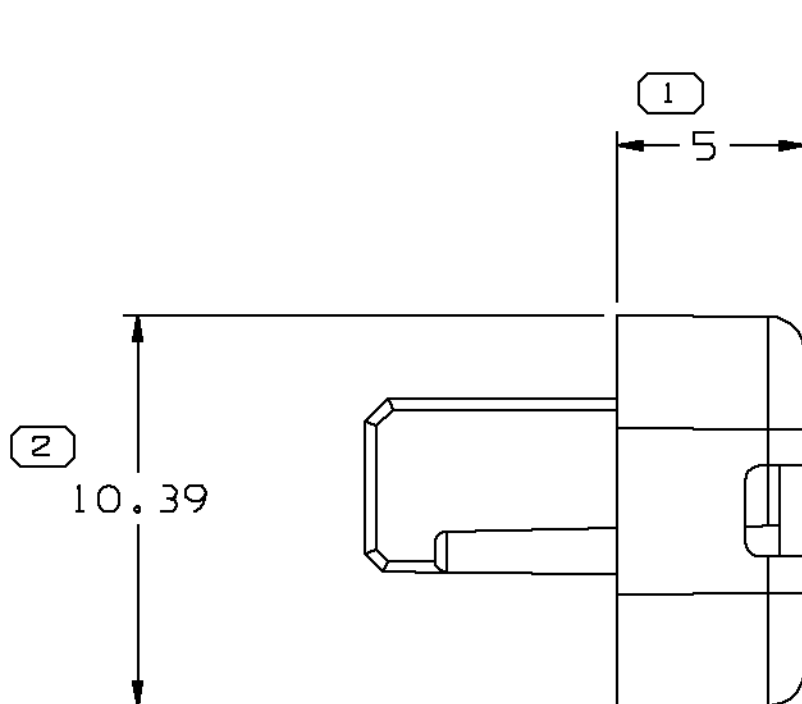


| SYMBOL DEFINITION | | |
|---|----------------------------------|---|
| A DIMENSION WITHOUT AN INSPECTION REPORT SYMBOL  DOES NOT REQUIRE INSPECTION. IT MAY BE CONTROLLED ON THE INDIVIDUAL COMPONENT DRAWING. | TOTAL NO OF INSPECTIONS REQUIRED | 8 |
| | LAST NO. USED | 7 |

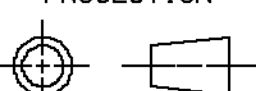
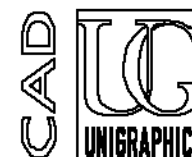
| DWG STATUS | | | | | ZONE | REVISION HISTORY | AUTH | DR | APVD 1 | APVD 2 |
|------------|-----|-----|-----|-----|------|--|--------|-----|--------|--------|
| DATE | STG | REV | N/P | CHG | | | | | | |
| 17JA03 | R | 01 | - | - | | WAS PE096779 AND RELEASED | 235343 | JAA | JAA | RMF |
| 03FE03 | R | 02 | - | - | | MATERIAL WAS M3571003 PA6 GB20+GF10 HS GRA | 236350 | CJP | CJP | RMF |
| 18FE03 | R | 03 | - | - | | REVISED LOCK RAMP, REMOVED RIB MATERIAL, 11.65 ±0.3 WAS (11.65), PROCESS SENSITIVE DIM WAS 6, VOLUME WAS 0.254 | 236725 | CJP | CJP | RMF |
| 09AU03 | R | 03 | AA | - | | UPDATED PDM ATTRIBUTES | 244194 | FRG | FRG | RMF |



VIEW SCALE DOES NOT
REFLECT ACTUAL PART SIZE

NOTES

- UNLESS OTHERWISE SPECIFIED AND/OR INDICATED: DIMENSIONS ARE TO FACE OF VIEW SHOWN AND AUTOMATICALLY ROUNDED BY COMPUTER FOR INSPECTION (SEE MATH MODEL FOR PRECISE DIMENSIONS). FOR ALL OTHER DIMENSIONS NOT SHOWN BUT REQUIRED FOR TOOL BUILD, SEE MATH MODEL FOR PRECISE TOOL PATH DATA.
- THIS PART USED IN ASSEMBLY 15419715
- MATERIAL RECYCLING CODE >PBT(GF20)< PER SAE J1344. (1)X(0.1) RAISED CHARACTERS AS SHOWN TO BE LOCATED ON ANY EXTERIOR SURFACE. OPTIONAL CONSTRUCTION TO BE NO MATERIAL RECYCLING CODE.
- THIS PART IS NOT CONTROLLED FOR AUTOMATIC FEEDING.
- MATING COMPONENTS OR EQUIVALENT: CONNECTOR 15423275
- (1)X(0.1) RAISED DELPHI CORPORATE BRAND TO BE LOCATED ON ANY EXTERIOR SURFACE, PREFERABLY VISIBLE AT FINAL ASSEMBLY. OPTIONAL CONSTRUCTION TO BE "PED" OR NO LOGO.

| | |
|--|---|
| DWG TYPE PART DRAWING | |
| STYLE | |
| VOLUME (CM³) 0.249 | DISTR CODE D |
| ROUTING 6900 | |
| UNLESS OTHERWISE SPECIFIED THIS DOCUMENT IS IN ACCORDANCE WITH ASME Y14.5M-1994 AS AMENDED BY THE GM GLOBAL DIMENSIONING AND TOLERANCING ADDENDUM - 1997. ALL GEOMETRIC TOLERANCES AND RELATED DATUMS APPLY RFS. RULE #1: PERFECT FORM AT MMC DOES NOT APPLY WHEN RELATIONSHIP BETWEEN FEATURES IS ESTABLISHED BY ORIENTATION OR LOCATION TOLERANCES. SEPARATE POSITION CALLOUTS MAY BE GAGED SEPARATELY, REGARDLESS OF DATUM REFERENCE. ALL DIMENSIONS ARE IN MILLIMETERS | |
| REFERENCE | |
| THIRD ANGLE PROJECTION | DO NOT SCALE |
|  |  |

| | | | | | |
|---|--------------|--------------------|--------------------|----------|------------------|
| DELPHI DELPHI PACKARD ELECTRIC SYSTEMS WARREN, OH | | | | | |
| DR | | | | | DATE |
| APVD1 J.S. ALVARADO | | | | | 21JA03 |
| APVD2 J.S. ALVARADO | | | | | 21JA03 |
| APVD3 R.M. FETCENKO | | | | | 24JA03 |
| APVD4 | | | | | |
| APVD5 | | | | | |
| SUBSTANCES OF CONCERN AND RECYCLED CONTENT PER DELPHI 10949001 | | | | | |
| MATERIAL M4629012 PBT GF20 GRA LT | | | | | |
| DRAWING NAME MISC RETAINER GRA | | | | | |
| DRAWING NUMBER 15423279 | | | | | |
| SIZE A1 | SCALE 5:1 | FRAME NO 1 OF 1 | SHEET NO 1 OF 1 | STG R | REV N/P 03 AA |

| | |
|--|-------|
| 7 PROCESS SENSITIVE DIMENSION | |
| DIMENSIONS ENCLOSED IN () INDICATE REFERENCE DIMENSIONS AND NO TOLERANCE LIMITS ARE ESTABLISHED | |
| DIMENSIONAL RANGE (MM) | |
| FROM | TO |
| > 0 | > 20 |
| > 20 | > 30 |
| > 30 | > 70 |
| > 70 | > 100 |
| > 100 | > 150 |
| > 150 | > 200 |
| > 200 | > 250 |
| > 250 | > 300 |
| > 300 | > 400 |
| TOLERANCE UNLESS OTHERWISE SPECIFIED | |
| ±0.15 | ±0.2 |
| ±0.3 | ±0.4 |
| ±0.5 | ±0.6 |
| ±0.8 | ±1 |
| ±1 | ±1.2 |
| ANGULAR TOLERANCE ±2° | |

Mouser Electronics

Authorized Distributor

Click to View Pricing, Inventory, Delivery & Lifecycle Information:

[Aptiv:](#)

[15423279](#)