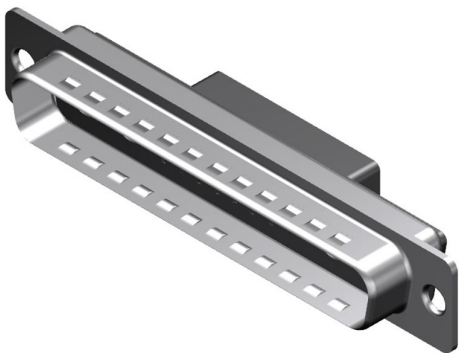




**Part Number :** [1731070175](#)  
**Product Description :** FCT Mixed Layout D-Sub Crimp Housing, Male, Tin-plated Shell with Dimples, 21 Circuits Unloaded, 17 Signal Contact Positions, Black Insulator  
**Series Number :** 173107  
**Status :** Active  
**Product Category :** D-Sub Connectors  
**Engineering Number :** FL21WA4P7-K120




Documents & Resources

Drawings  
[1731070175\\_sd.pdf](#)

Product Environment Compliance

Compliance

GADSL/IMDS	Not Relevant
China RoHS	
EU ELV	Not Relevant
Low-Halogen Status	Not Reviewed per IEC 61249-2-21
REACH SVHC	Contains Lead per D(2023)8585-DC (23 Jan 2024)
EU RoHS	Compliant with Exemption 6(c) per EU 2015/863

Multiple Part Product Compliance Statements

- Eu RoHS
- REACH SVHC
- Low-Halogen

Multiple Part Industry Compliance Documents

- IPC 1752A Class C
- IPC 1752A Class D
- Molex Product Compliance Declaration
- IEC-62474

## Part Details

### General

Status	Active
Category	D-Sub Connectors
Series	173107
Description	FCT Mixed Layout D-Sub Crimp Housing, Male, Tin-plated Shell with Dimples, 21 Circuits Unloaded, 17 Signal Contact Positions, Black Insulator
IP Rating	IP20
Magnetic	Yes
Product Name	FCT Products
Type	Mixed Layout
UPC	889056485517

### Electrical

Shielded	Yes
----------	-----

### Physical

Circuits (Loaded)	0
Circuits (maximum)	21
Color - Resin	Black
Durability (mating cycles max)	500
Gender	Male
Material - Resin	PBT
Material - Shell	Steel
Net Weight	10.200/g
Number of Rows	2
Orientation	Straight
Packaging Type	Carton
Panel Mount	Rear
Panel Mount Method	Flange

PCB Locator	No
PCB Retention	None
Pitch - Mating Interface	2.84mm
Pitch - Termination Interface	2.84mm
Plating - Shell	Tin
Polarized to Mating Part	Yes
Ports	1
Temperature Range - Operating	-55° to +115°C
Waterproof / Dustproof	No
Waterproof / Dustproof Type	IP20
Wire Size (AWG)	18, 20, 22, 24, 26, 28

---

## Mates With / Use With

### Mates with Part(s)

Description	Part Number
Mates With	FCT Mixed Layout D-Sub, Size 4, 21WA4, Socket

### Use with Part(s)

Description	Part Number
Use With	FCT Coaxial, High Power, High Voltage, or Pneumatic Contacts

---