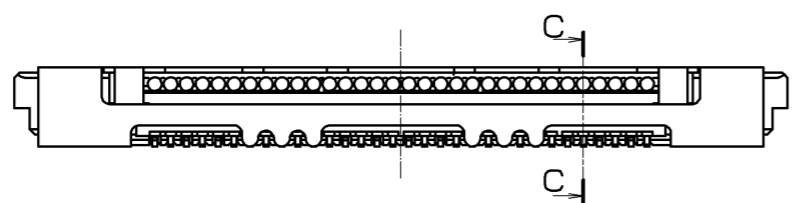
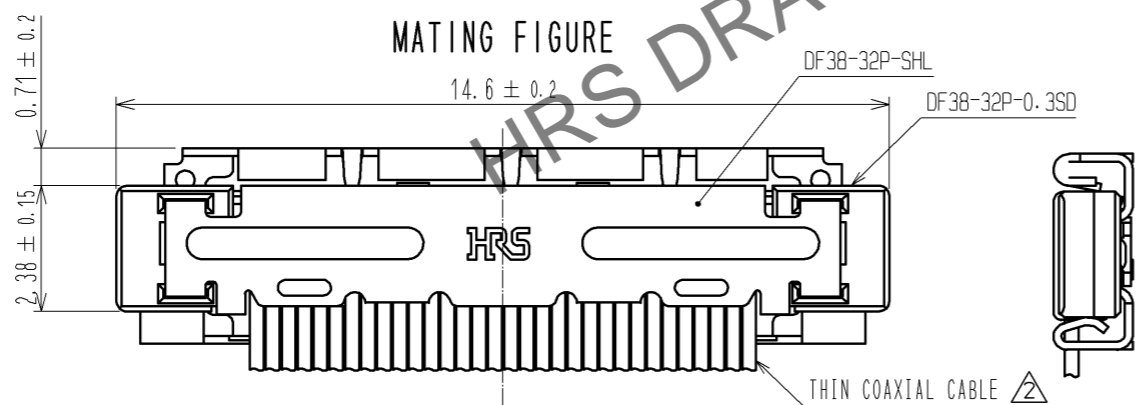
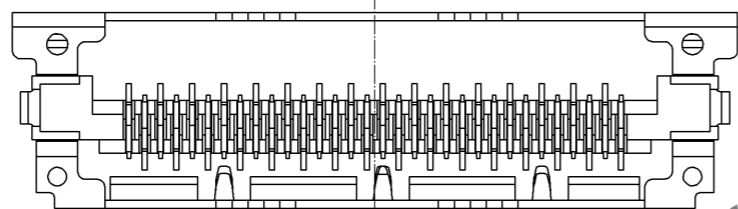
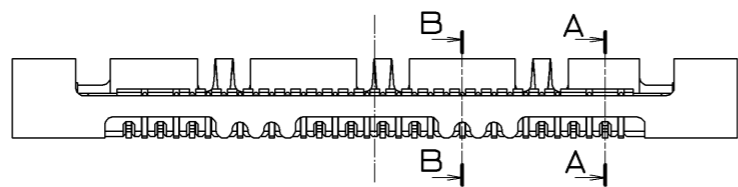
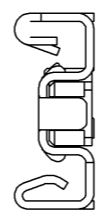
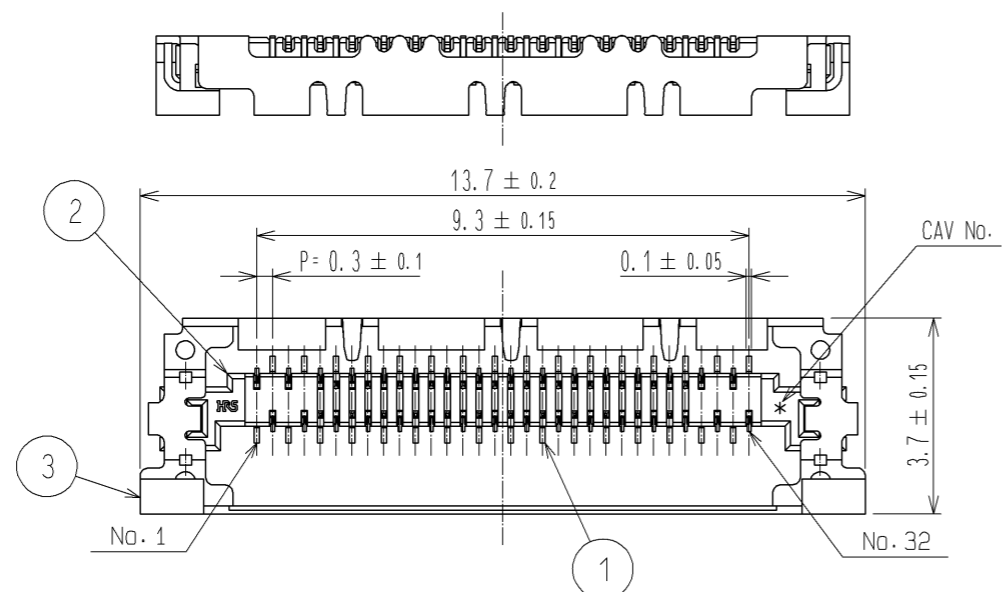
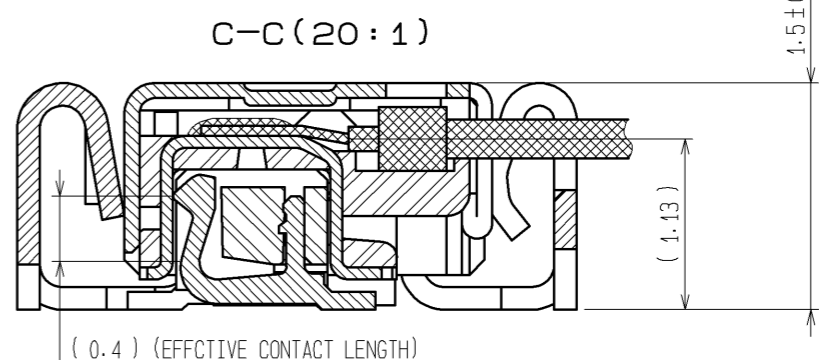
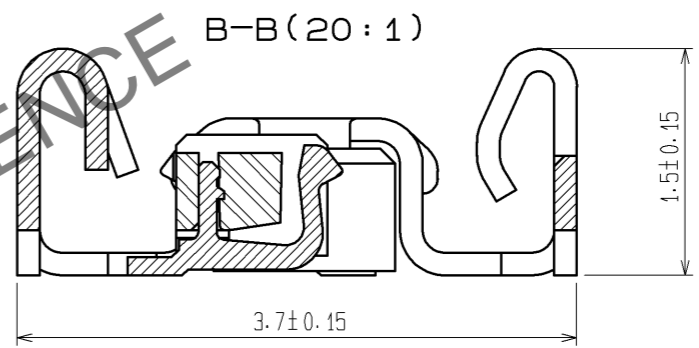
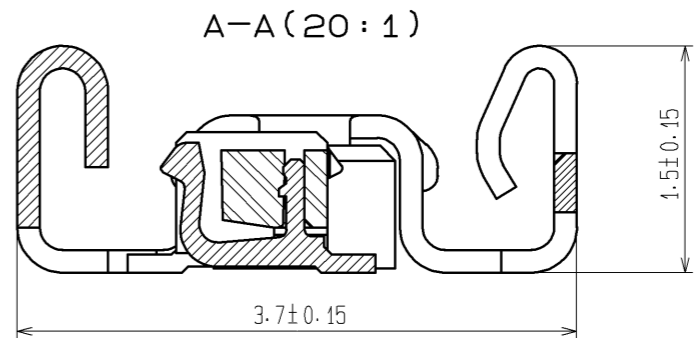


Jul.1.2024 Copyright 2024 HIROSE ELECTRIC CO., LTD. All Rights Reserved.
In case of consideration for using Automotive equipment / device which demand high reliability, kindly contact our sales window correspondents.

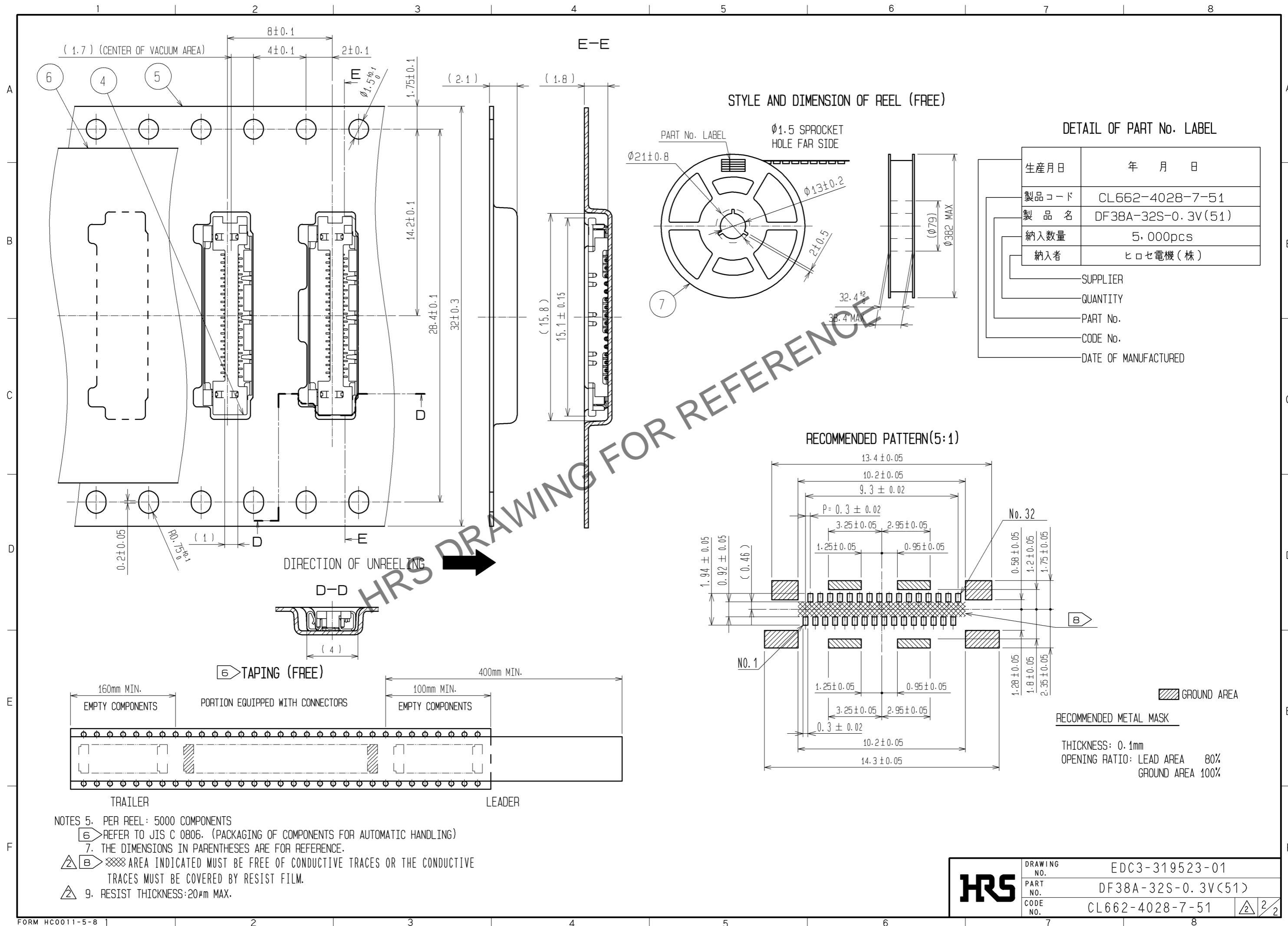


- NOTES
1. LEAD CO-PLANARITY SHALL BE 0.1mm MAX.
 2. STIFFENER IS REQUIRED FOR MOUNTING ONTO FPC IN ORDER TO AVOID STRESS BY FPC SLACKING TO MOUNTED CONNECTOR.
 3. UNMATING SHALL BE DONE WITH THE SPECIFIC EXTRACTION TOOL.
 4. SOLDERING REWORK IS NOT POSSIBLE SINCE SOLDERING LEADS ARE COVERED BY METAL SHIELDING.



2	LCP	UL94V-0	7	PS	BLACK
1	PHOSPHOR BRONZE	CONTACT AREA : Au PLATING 0.1µm min LEAD AREA : Au PLATING 0.1µm min UNDER PLATING : Ni PLATING 1µm min	6	POLYESTER	CLEAR
			5	PS	CLEAR
			4	POLYAMIDE	BLACK (CAP)
			3	PHOSPHOR BRONZE	WHOLE AREA : Sn PLATING 1µm min UNDER PLATING : Cu PLATING 0.2µm min
NO.	MATERIAL	FINISH . REMARKS	NO.	MATERIAL	FINISH . REMARKS
UNITS mm		SCALE FREE	COUNT 3	DESCRIPTION OF REVISIONS DIS-H-004511	
APPROVED : TS. SAKATA 08.06.18			DESIGNED	KT. ISHII	
CHECED : HK. UMEHARA 08.06.18			CHECKED	TS. FUKUSHIMA	
DESIGNED : HY. SHIOZAWA 08.06.18			DATE	10.03.10	
DRAWN : SI. ISHII 08.06.18			DRAWING NO. EDC3-319523-01		
PART NO. DF38A-32S-0.3V(51)			CODE NO. CL662-4028-7-51		
			1/2		

Jul.1.2024 Copyright 2024 HIROSE ELECTRIC CO., LTD. All Rights Reserved.
In case of consideration for using Automotive equipment / device which demand high reliability, kindly contact our sales window correspondents.



HRS	DRAWING NO.	EDC3-319523-01
	PART NO.	DF38A-32S-0.3V(51)
	CODE NO.	CL662-4028-7-51
		2/2