



Jauch Battery Solutions

- Reliable energy for your application
- Standard cells and customized packs
- ESD protection
- Battery Certification Experts



RoHS compliant



Pb free



REACH
compliant



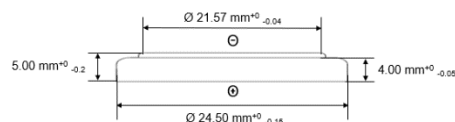
Conflict
Mineral free

Technical Data Sheet for CR2450

SPECIFICATIONS

Nominal Voltage	3V
Nominal Capacity	610 mAh
Standard Load	7.5 kΩ
Standard Current	0.4 mA
Max. Continuous Current	4 mA
Max. Pulse Current	15 mA
Operating Temperature	-20°C to +60°C*
Weight	Approx. 6.2 gr.
Chemistry	Li/ MnO ₂
UL1642	MH62838

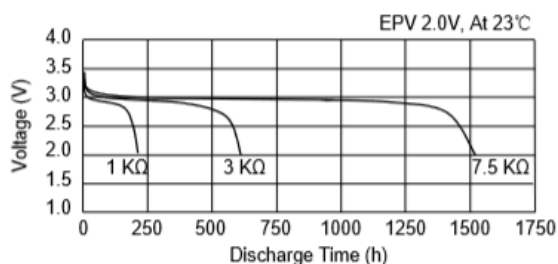
DIMENSIONS



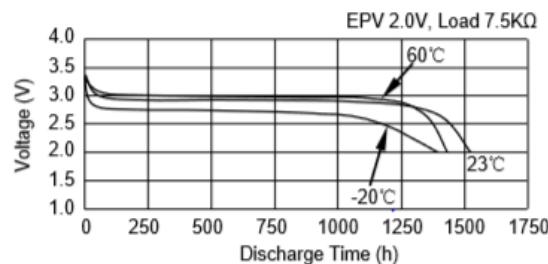
*In applications where the battery is exposed to temperatures >60°C, please contact Jauch.

Available Terminals and Wire Connectors: please contact Jauch for diagram of batteries with terminals (batterytechnology@jauch.com).

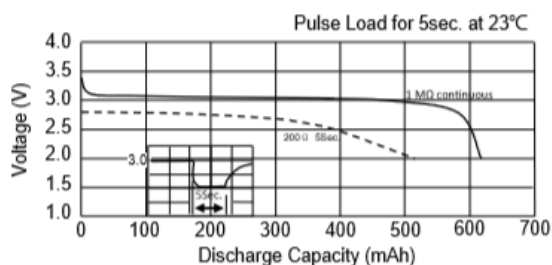
DISCHARGE CHARACTERISTICS



TEMPERATURE CHARACTERISTICS



PULSE DISCHARGE CHARACTERISTICS



LOAD VS: CAPACITY

