



Connectors > Automotive Connectors > Automotive Housings



Connector System: **Wire-to-Board, Wire-to-Device, Wire-to-Wire**

Number of Positions: **2**

Connector & Housing Type: **Housing for Female Terminals**

Centerline (Pitch): **10.4 mm [.409 in]**

Sealable: **Yes**

Features

Product Type Features

| | |
|--------------------------|---|
| Mixed & Hybrid Connector | No |
| Connector Shape | Rectangular |
| Connector System | Wire-to-Board, Wire-to-Device, Wire-to-Wire |
| Connector & Housing Type | Housing for Female Terminals |
| Sealable | Yes |
| Primary Locking Feature | On the Terminal |

Configuration Features

| | |
|---------------------|---|
| Number of Positions | 2 |
| Number of Rows | 1 |

Electrical Characteristics

| | |
|------------------------------|---|
| Operating Voltage | 600 VDC |
| Nominal Voltage Architecture | 12 V, 24 V, 42 V, 48 V, 80 V, 90 V, 125 V, 240 V, 500 V, 550 V, 600 V |

Body Features

| | |
|-------------------------|--------|
| Cable Exit Angle | 180° |
| Primary Product Color | Orange |
| Connector & Keying Code | B |

Contact Features



| | |
|------------------|----------------|
| Contact Type | Receptacle |
| Mating Tab Width | 2.8 mm[.11 in] |

Mechanical Attachment

| | |
|-----------------------------|----------------------------|
| Terminal Position Assurance | No |
| Strain Relief | Without |
| Mating Alignment Type | Keyed |
| Mating Alignment | With |
| Connector Mounting Type | Cable Mount (Free-Hanging) |

Housing Features

| | |
|--------------------|------------------|
| Housing Material | PA GF |
| Centerline (Pitch) | 10.4 mm[.409 in] |

Dimensions

| | |
|------------------|-------------------|
| Connector Height | 12.6 mm[.496 in] |
| Product Width | 32.4 mm[1.276 in] |
| Product Length | 22.4 mm[.882 in] |

Usage Conditions

| | |
|-----------------------------|---|
| Operating Temperature (Max) | 70 °C, 75 °C, 80 °C, 85 °C, 90 °C, 100 °C, 105 °C, 110 °C, 120 °C, 125 °C[158 °F][167 °F][176 °F][185 °F][194 °F][212 °F][221 °F][230 °F][248 °F][257 °F] |
| Operating Temperature Range | -40 – 125 °C[-40 – 257 °F] |

Operation/Application

| | |
|---------------------|--------|
| Circuit Application | Signal |
|---------------------|--------|

Industry Standards

| | |
|------------------------|---------|
| Degree of Protection | IP6K9K |
| UL Flammability Rating | UL 94HB |

Other

| | |
|--------------------------------------|----|
| Serviceable | No |
| Connector Position Assurance Capable | No |

Product Compliance

For compliance documentation, visit the product page on TE.com>

| | |
|------------------------------|-----------|
| EU RoHS Directive 2011/65/EU | Compliant |
|------------------------------|-----------|



| | |
|---|---|
| EU ELV Directive 2000/53/EC | Compliant |
| China RoHS 2 Directive MIIT Order No 32, 2016 | No Restricted Materials Above Threshold |
| EU REACH Regulation (EC) No. 1907/2006 | Current ECHA Candidate List: JUNE 2024 (241) Candidate List Declared Against: JUNE 2024 (241) Does not contain REACH SVHC |
| Halogen Content | Low Bromine/Chlorine - Br and Cl < 900 ppm per homogenous material. Also BFR /CFR/PVC Free |
| Solder Process Capability | Not reviewed for solder process capability |

Product Compliance Disclaimer

This information is provided based on reasonable inquiry of our suppliers and represents our current actual knowledge based on the information they provided. This information is subject to change. The part numbers that TE has identified as EU RoHS compliant have a maximum concentration of 0.1% by weight in homogenous materials for lead, hexavalent chromium, mercury, PBB, PBDE, DBP, BBP, DEHP, DIBP, and 0.01% for cadmium, or qualify for an exemption to these limits as defined in the Annexes of Directive 2011/65/EU (RoHS2). Finished electrical and electronic equipment products will be CE marked as required by Directive 2011/65/EU. Components may not be CE marked. Additionally, the part numbers that TE has identified as EU ELV compliant have a maximum concentration of 0.1% by weight in homogenous materials for lead, hexavalent chromium, and mercury, and 0.01% for cadmium, or qualify for an exemption to these limits as defined in the Annexes of Directive 2000/53/EC (ELV). Regarding the REACH Regulation, the information TE provides on SVHC in articles for this part number is based on the latest European Chemicals Agency (ECHA) 'Guidance on requirements for substances in articles' posted at this URL: <https://echa.europa.eu/guidance-documents/guidance-on-reach>

Compatible Parts



TE Part # 2103247-1
SPLIT HEADER ASSY, KEY A, HVA280




TE Part # 1587733-1
SHIPPING CAP, CAP, HVA280-3PM




TE Part # 2310479-2
INNER HSG, SPLIT HDR, KEY B, HVA280, V0


Also in the Series | HVA 280




Automotive Connector Caps & Covers (5)



Automotive Connector EMC Shielding (15)



Automotive Housings(71)



Connector Seals & Cavity Plugs(8)



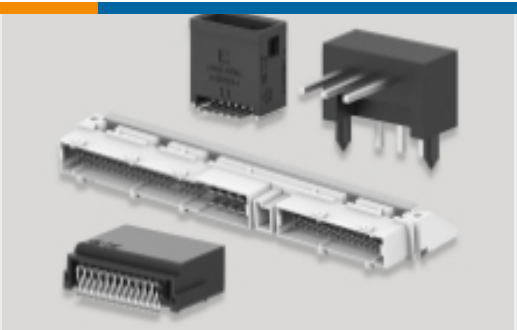
Electric, Hybrid & Fuel Cell Cable Assemblies(21)



High Voltage Wire Processing Equipment(7)



Other Automotive Connector Accessories(38)

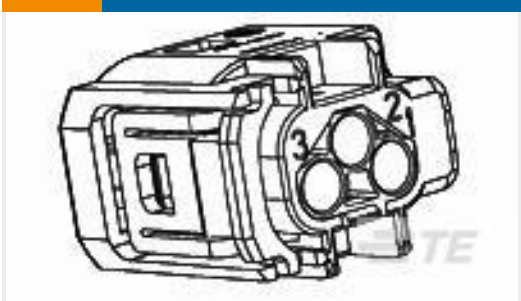


PCB Headers & Receptacles(32)

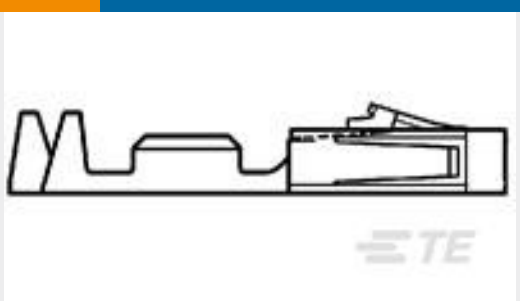
Customers Also Bought



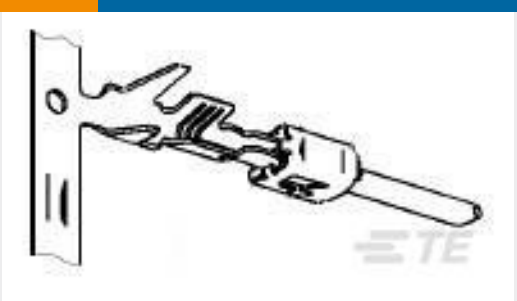
TE Part #DTF13-6P
HDR, 6P, BLK, RA, SN/NI/CU



TE Part #2-967642-1
3POS MQS REC SEALED COD B



TE Part #104479-3
SHORT POINT CONT 15 DPLX STMPD



TE Part #2-2141598-2
TAB 2.8x0.8 CONTACT CF SRC Ag



TE Part #2173157-3
MICRO USB, TYPE B, SPLASHPROOF (LOW MOQ)



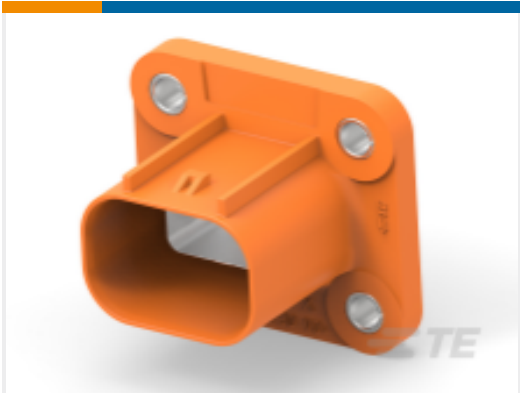
TE Part #4-2103177-2
PLUG ASSY, KEY B, FA,CPA, HVA280-2PHI XE



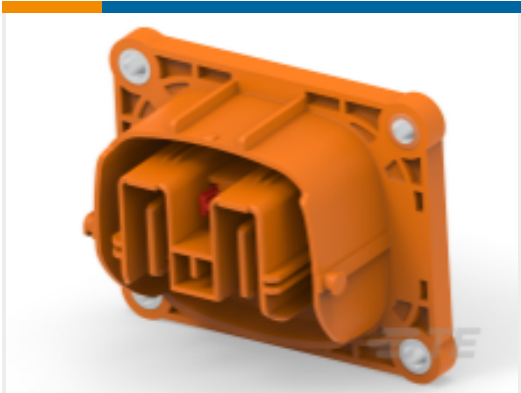
TE Part #323683
TERMINAL,SOLIS R HT 12-10 1/4



TE Part #1-2103346-2
HVA280 2 Bay Header Sub-Assy, KEY D, F



TE Part #2310541-2
SPLIT HEADER ASSY, KEY B, HVA280, V0



TE Part #2340465-1
2POS,PCON21,HDR OUTER HSG ASSY,COD A

Documents

Product Drawings

Inner Housing, Split Hdr, Key B, HVA280

English

CAD Files

3D PDF

3D

Customer View Model

ENG_CVM_CVM_2103245-2_A.2d_dxf.zip



English

Customer View Model

[ENG_CVM_CVM_2103245-2_A.3d_igs.zip](#)

English

Customer View Model

[ENG_CVM_CVM_2103245-2_A.3d_stp.zip](#)

English

By downloading the CAD file I accept and agree to the [Terms and Conditions](#) of use.

Instruction Sheets

[Instruction Sheet \(U.S.\)](#)

English