

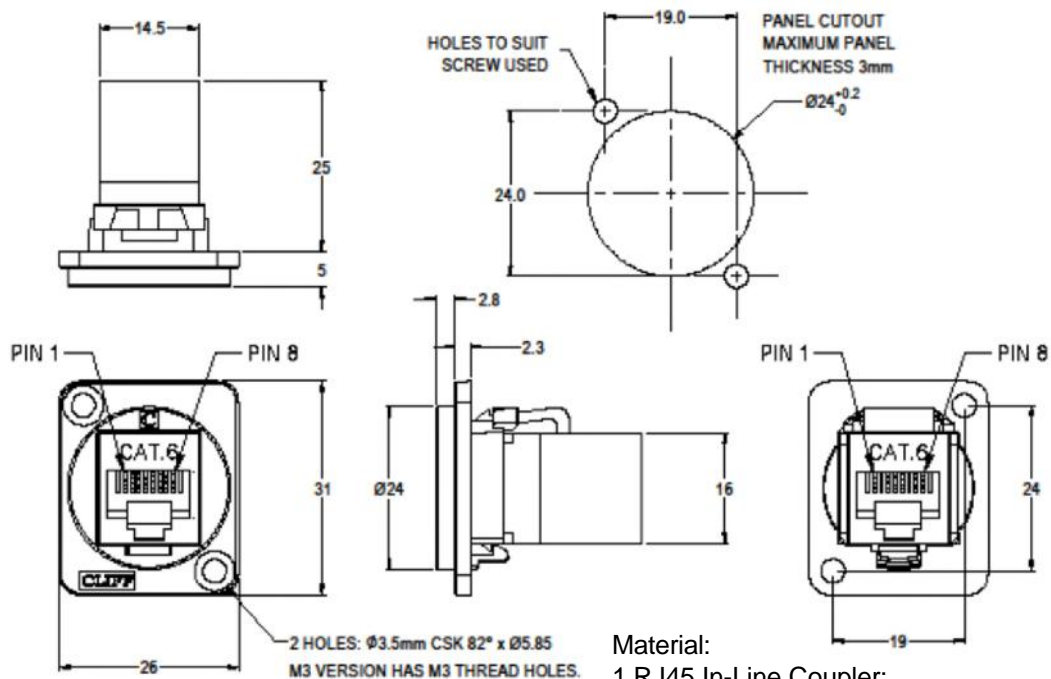


Datasheet

ENGLISH

RS PRO CAT6 RJ45 SHIELDED METAL M3 FEEDTHROUGH CONNECTOR

Stock No: 175-0145



Performance:

- a. T568A & T568B wiring.
- b. Meet ISO/IEC 11801 and EN50173
- c. Meet ANSI/TIA/EIA 568B.2

Material:

- 1. RJ45 In-Line Coupler: ABS, UL 94V-0, Black colour, Fully shielded
- 2. RJ45 In-Line Coupler Contact: Phosphor Bronze, 3-50 micro inches gold plating over nickel plate.
- 3. PCB: FR4, UL 94V-0
- 4. Frame: Nickel or black plated zinc diecast

rspro.com

Features & Benefits:

- Fits standard XLR Ø24mm cutout.
- No soldering or punch termination. Use standard cable for each connector style.
- Front or rear mounted.
- Low rear profile

General:

Please note: Functionality is affected by cable quality, length and cable wiring configuration.

Other models available



rspro.com

