

FEATURES

- Tin plated copper tube
- Durable nylon insulation
- High-grade Vinyl or Nylon insulating material (Nylon insulation for mini yellow terminals only)
- Durable and reliable termination
- Extremely Cost effective
- Easy to crimp using a ratchet tool

RS PRO Butt Wire Splice Connector, Red, Insulated, Tin 22 → 16 AWG

RS Stock No.: 613-9794



RS Professionally Approved Products bring to you professional quality parts across all product categories. Our product range has been tested by engineers and provides a comparable quality to the leading brands without paying a premium price.

Product Description

From RS PRO, a selection of insulated ferrules or Butt Connectors designed for crimping electrical wires. The tube-shaped terminals act as a solderless cable joint allowing electrical current to flow safely from one wire to another. Professionally designed using high-quality materials, RS PRO's range of butt splice terminals are used to repair, change or lengthen electrical circuits.

General Specifications

Splice Type	Butt
Contact Material	Copper
Contact Plating	Tin
Colour	Red
Insulation	Insulated
Insulation Material	Vinyl
Application	Industrial control systems, Automotive and transportation sector, Machine building, Electrical and electronic equipment, Commercial and domestic appliances

Electrical Specifications

Voltage Rating	600 V
-----------------------	-------

Mechanical Specifications

Minimum Wire Size (mm ²)	0.5mm ²
Maximum Wire Size (mm ²)	1.5mm ²
Overall Length	24.2mm
Diameter	4mm
Minimum Wire Size (AWG)	22AWG
Maximum Wire Size (AWG)	16AWG
Wire Size	22 to 16 AWG

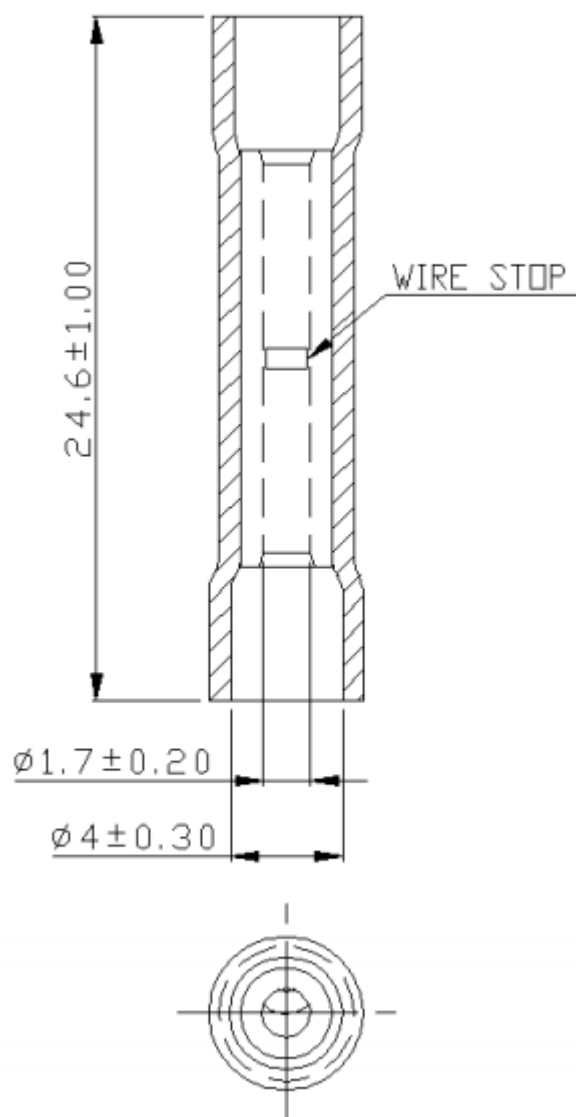
Operation Environment Specifications

Maximum Operating Temperature	+105°C
Minimum Operating Temperature	-20°C
Operating Temperature Range	-20 to +105°C

Approvals

Compliance/Certifications	UL (E125401)
Standards Met	ANSI/ESD S20.20:2014 and BS EN 61340-5-1:2007





MAXIMUM ELECTRIC CURRENT:

A.W.G.	22	20	18	16
AMP.	9	12	17	18



MAXIMUM ELECTRICAL RATING: 105°C 600 VOLTS MAX.

INSULATION MATERIAL: VINYL

INSULATION COLOR: 22-16A.W.G.: RED

TERMINAL MATERIAL: COPPER

WIRE RANGE A.W.G. mm ²	ITEM NO.	DIMENSION inch(mm)			MATERIAL	CRIMPING TOOL
		L	D	d1		
22-16 A.W.G. 0.5-1.5 mm ²	 613-9794	0.953 24.2	0.157 4.000	0.067 1.7	COPPER TUBULAR	WITH DIE INDEX COLOR: RED