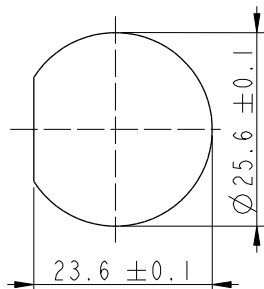
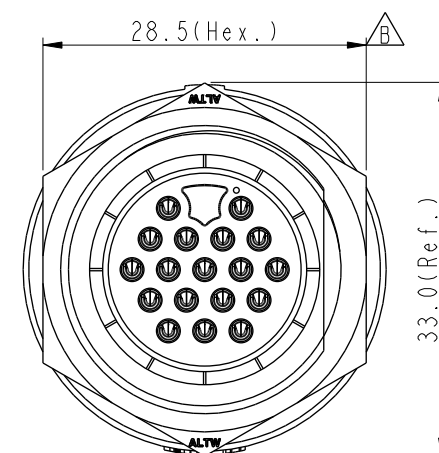
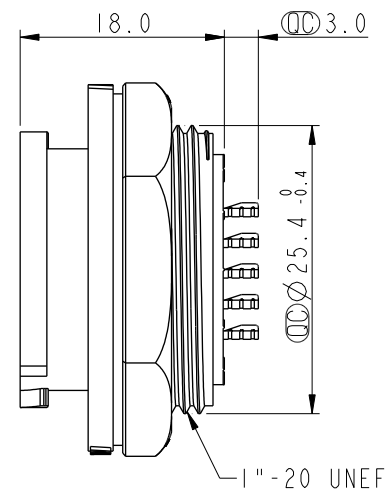
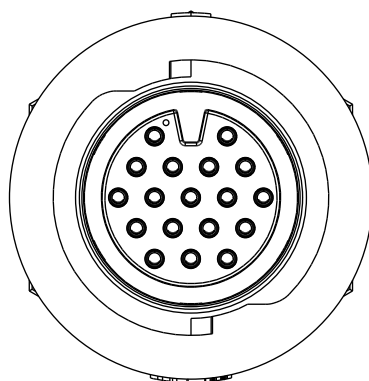
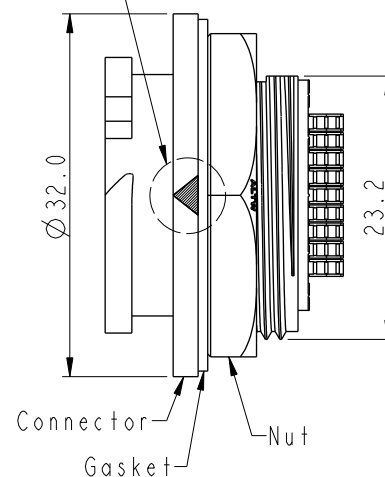
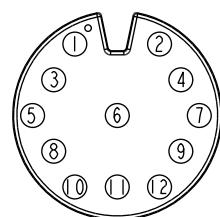


REV.	ECN NO.	DATE	SIGN	DESCRIPTION
B	LEN1660029	2016/05/26	Vicky	Update Nut Dime
C	C190403	2019/03/13	Vicky	Change Note
D	C220628	2022/05/12	Vicky	$\triangle$ D X4

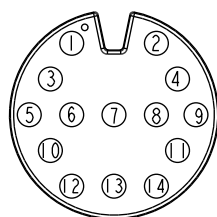
Recommended  
Panel Cut-Out $\triangle$ DD-XXRMFS-QC8001  
XX: No. Of Pin $\odot$ White Printing

Note:

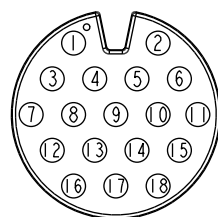
- \* RoHS Compliant
- \*  $\odot$  Important dimension
- \* Waterproof rate: IPX8, unmated 1m/24h
- \* Connector
- Housing: Thermoplastic, Black
- Pin: Copper Alloy, Gold plated
- \* Nut: Thermoplastic, Black
- \* Gasket: Rubber, Gray
- \* For panel thickness max: 3.6mm
- \* Gasket and nut are packed separately in pe bag



12P



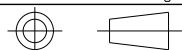
14P



18P

Pin Assignments Front View

UNIT:mm



TOLERANCE  
.X  $\pm 0.25$   
.XX  $\pm 0.1$   
.XXX  $\pm 0.05$   
ANGLES  $\pm 1^\circ$

TITLE  
XLOK, D-5A, REAR FASTENED  
M, F, SOLDER, PUSH LOCK  $\triangle$

SCALE  
3:2SIZE  
A4SHEET  
1 OF 1REV.  
DWC-REV.  
A.3 $\odot$ Inspection item

**Amphenol LTW**  
安費諾亮泰企業股份有限公司

ITEM NO

DWG NO

 $\triangle$ DD-XXRMFS-QC8001

CUSTOMER

ALTW

DRAWN BY

Vicky

CHECKED BY

Rita

APPROVED BY

Max

DATE

2019-03-13

DATE

2019-03-13

DATE

2019-03-13