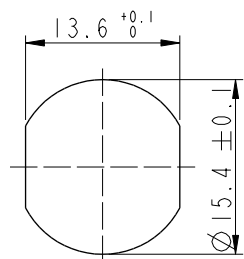


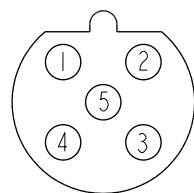
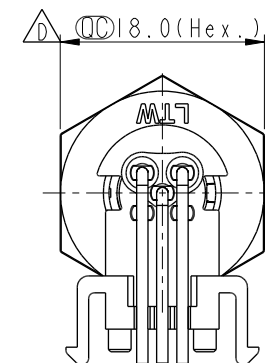
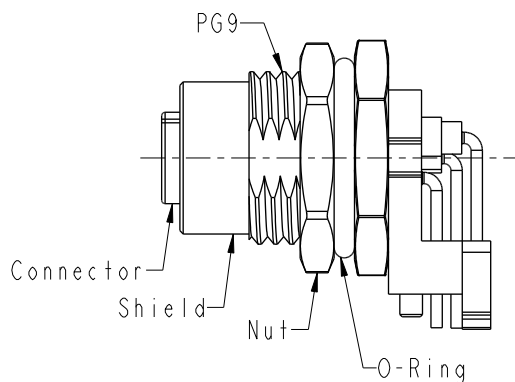
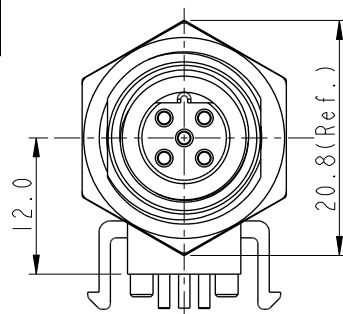
REV.	ECN NO.	DATE	SIGN	DESCRIPTION
B	C191427	2019/08/14	Nan_Su	Change Views
C	C201469	2020/09/24	Ruru	$\triangle C$ X4
D	C210309	2021/02/26	Ruru	$\triangle D$ X4



Recommended
Panel Cut-Out

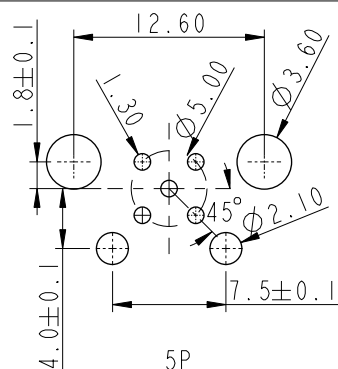
$\triangle C$ M12B-XXPFFR-SF8001

XX: No. Of Pin



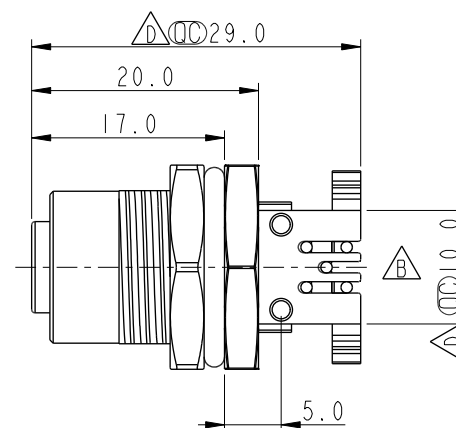
5P

Pin Assignment
Front View



5P

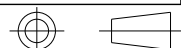
PCB Layout



$\triangle C$ $\triangle D$ Note:

- * RoHS Compliant
- * $\triangle C$ Important dimension
- * Waterproof rate: IPX8, unmated 1m/24h
- * Connector
 - Housing: Thermoplastic, Black
 - Pin: Copper alloy, Gold plated
 - O-Ring: Rubber, Gray
- * Shield: Metal
- * Nut: Metal
- * O-Ring: Rubber, Black
- * For panel thickness max: 4.5mm
- * For pcb thickness max: 1.6mm
- * Nut is packed separately in pe bag

UNIT:mm



TOLERANCE
.X ± 0.25
.XX ± 0.1
.XXX ± 0.05
ANGLES $\pm 1^\circ$

TITLE N SEN, M12 B, SCREW RECEPTACLE, F, F, PCB R $\triangle C$			
SCALE 3:2	SIZE A4	SHEET 1 OF 1	
REV. D	WC-REV. A.1	$\triangle C$: Inspection item	

Amphenol LTW
安費諾亮泰企業股份有限公司

ITEM NO.	DRAWN BY Nan_Su	DATE 2019-08-14
DWG. NO. $\triangle C$ M12B-XXPFFR-SF8001	CHECKED BY Feng-Li	DATE 2019-08-14
CUSTOMER ALTW	APPROVED BY Jerry	DATE 2019-08-14