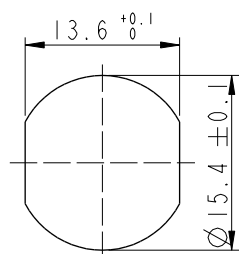


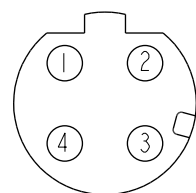
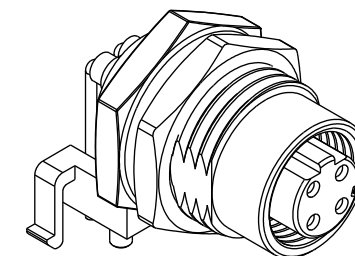
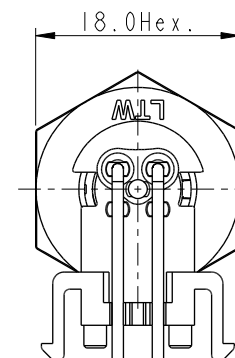
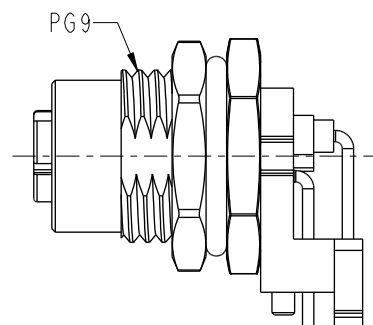
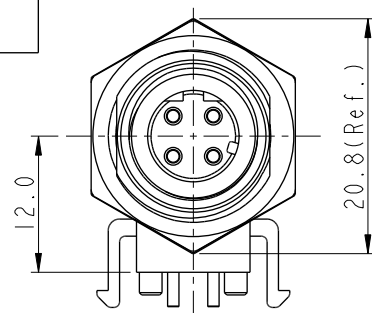
REV.	ECN NO.	DATE	SIGN	DESCRIPTION
C	C191427	2019/08/13	Gill Lai	Change layout dimension
D	C201469	2020/09/25	Ruru	$\triangle D$ X4
E	C210309	2021/03/02	Ruru	$\triangle E$ X2



Recommended  
Panel Cut-Out

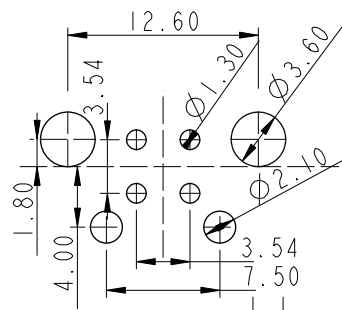
$\triangle D$   
MI2D-XXPFFR-SF8001

XX: No. Of Pin



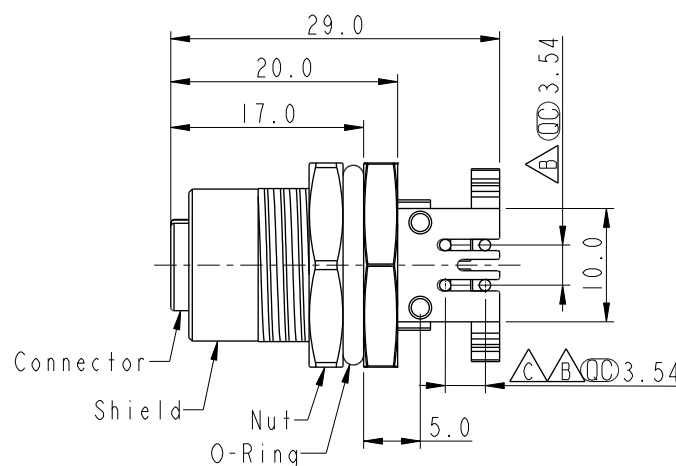
4P

Pin Assignment  
Front View



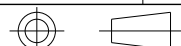
4P

$\triangle B$   $\triangle C$   $\triangle E$  PCB Layout



- $\triangle D$   $\triangle E$  Note:
- \* RoHS Compliant
  - \*  $\triangle$  Important dimension
  - \* Waterproof rate: IPX8, unmated 1m/24h
  - \* Connector
  - Housing: Thermoplastic, Black
  - Pin: Copper alloy, Gold plated
  - O-Ring: Rubber, Gray
  - \* Shield: Metal
  - \* Nut: Metal
  - \* O-Ring: Rubber, Black
  - \* For panel thickness max: 4.5mm
  - \* For pcb thickness max: 1.6mm
  - \* Nut is packed separately in pe bag

UNIT:mm



TOLERANCE  
.X  $\pm 0.25$   
.XX  $\pm 0.1$   
.XXX  $\pm 0.05$   
ANGLES  $\pm 1^\circ$

TITLE  
N SEN, MI2 D, SCREW  
RECEPTACLE, F, F, PCB R  $\triangle D$

SCALE 3:2 SIZE A4 SHEET 1 OF 1

REV. E WC-REV. .0  $\triangle$  Inspection item

**Amphenol LTW**  
安費諾亮泰企業股份有限公司

ITEM NO	DRAWN BY	DATE
DWG. NO $\triangle$ MI2D-XXPFFR-SF8001	Gill Lai	2019/08/13
CUSTOMER	CHECKED BY	DATE
ALTW	Sam Ho	2019/08/13
	APPROVED BY	DATE
	Fred Lee	2019/08/13